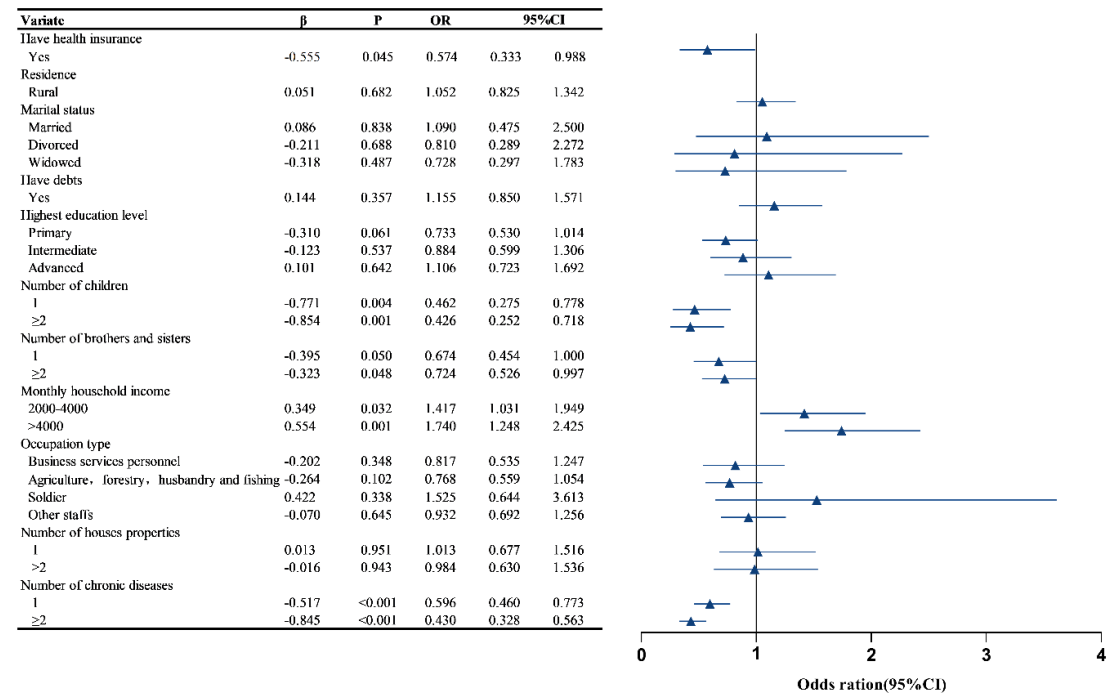
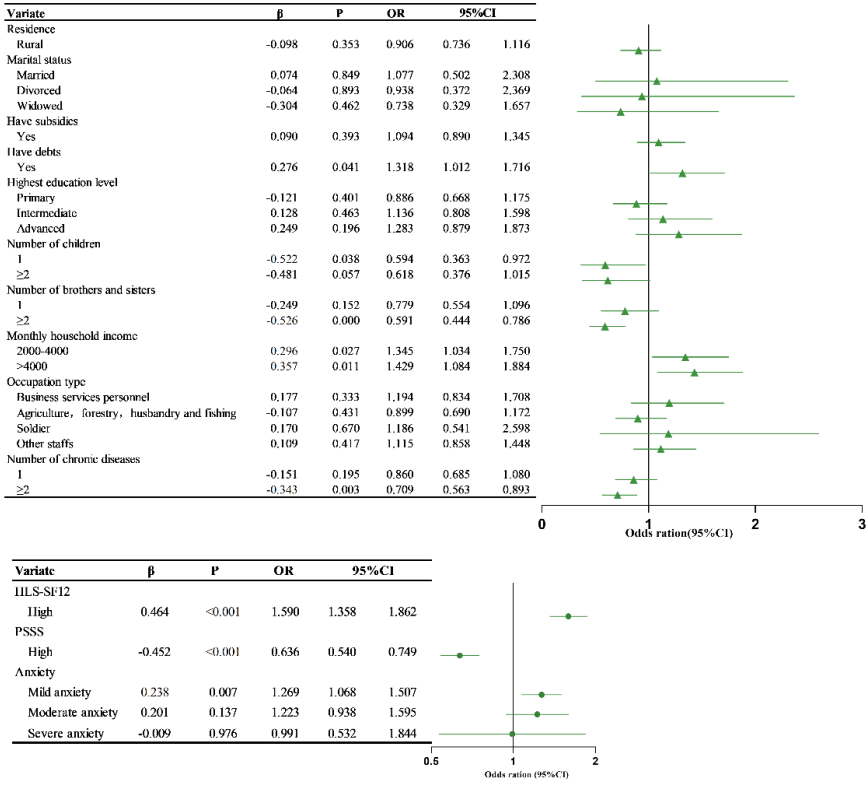


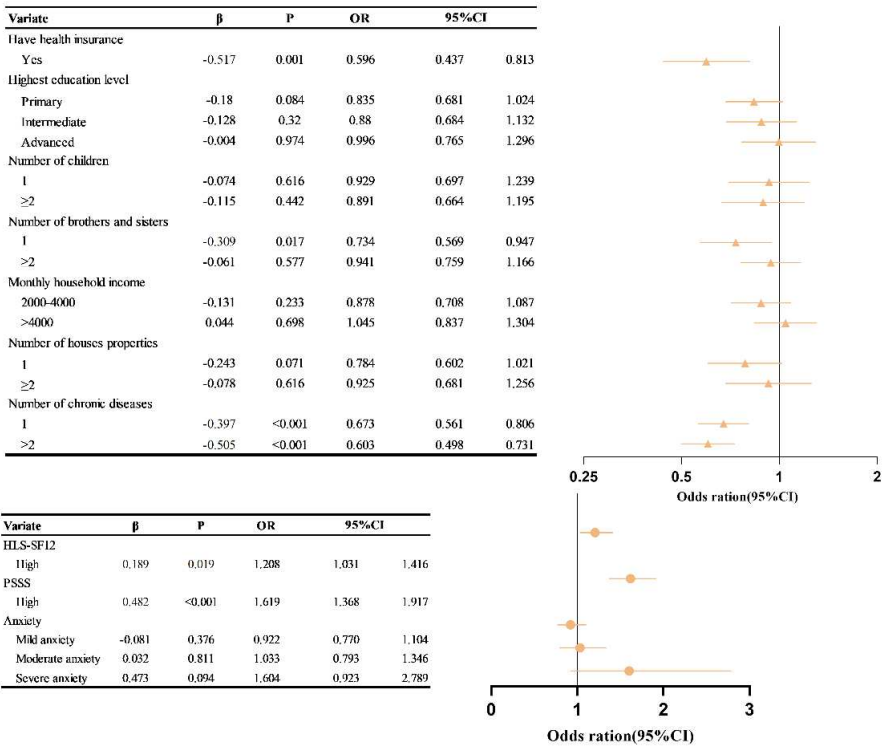
supplementary figure 1. Univariate (chi-square) analysis of the "reluctance-reluctance" attitude of older adults towards purchasing institutionalized elderly care services (****P<0.0001, ***P<0.001, **p<0.01, *p<0.05)



supplementary figure 2. Results of regression analysis of “reluctance – willingness” of older adults to purchase institutional care services



supplementary figure 3. Results of regression analysis of the “reluctance-hesitation” attitude of older adults in purchasing institutionalized elderly care services



supplementary figure 4. Results of regression analysis of “hesitant-willing” attitude of older adults towards purchasing institutionalized elderly care services