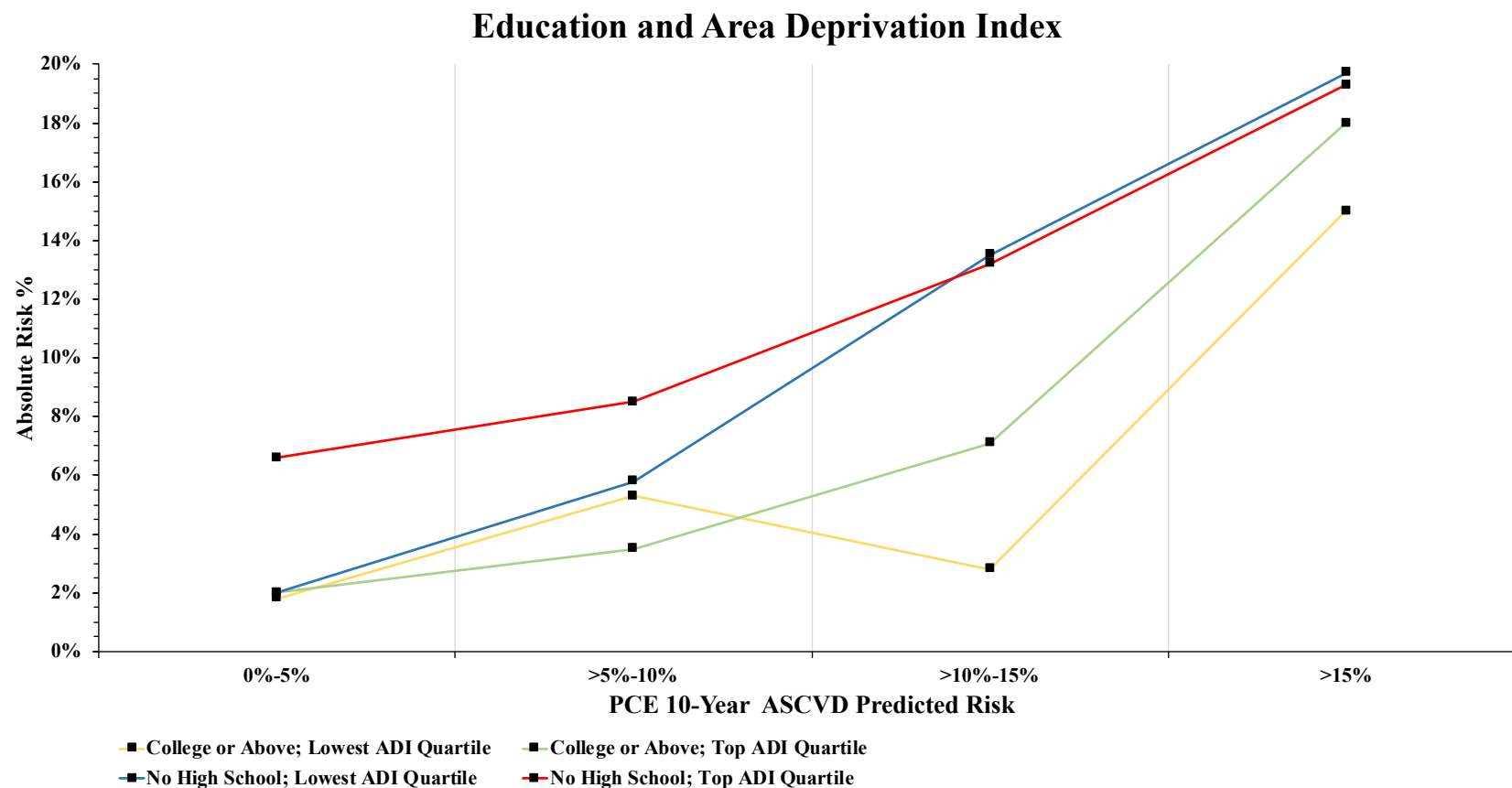


## SUPPLEMENTAL MATERIAL



**Supplement Figure 1.** Absolute risk of ASCVD accounting for dose response of both education attainment and Area Deprivation Index.

Abbreviations: ADI, Area Deprivation Index; ASCVD, atherosclerotic cardiovascular disease; PCE, Pooled Cohort Equations.

\*Area Deprivation Index measures area-level social deprivation and estimated using the census-tract of participants' 9-digit zip code; higher values represent higher area-level social deprivation and categories were defined using quartiles of distribution.

†Analysis not powered to estimate the relationship between both socioeconomic status exposure variables simultaneously with absolute risk percentage; and convergence on 95% confidence interval point estimates were not obtained.

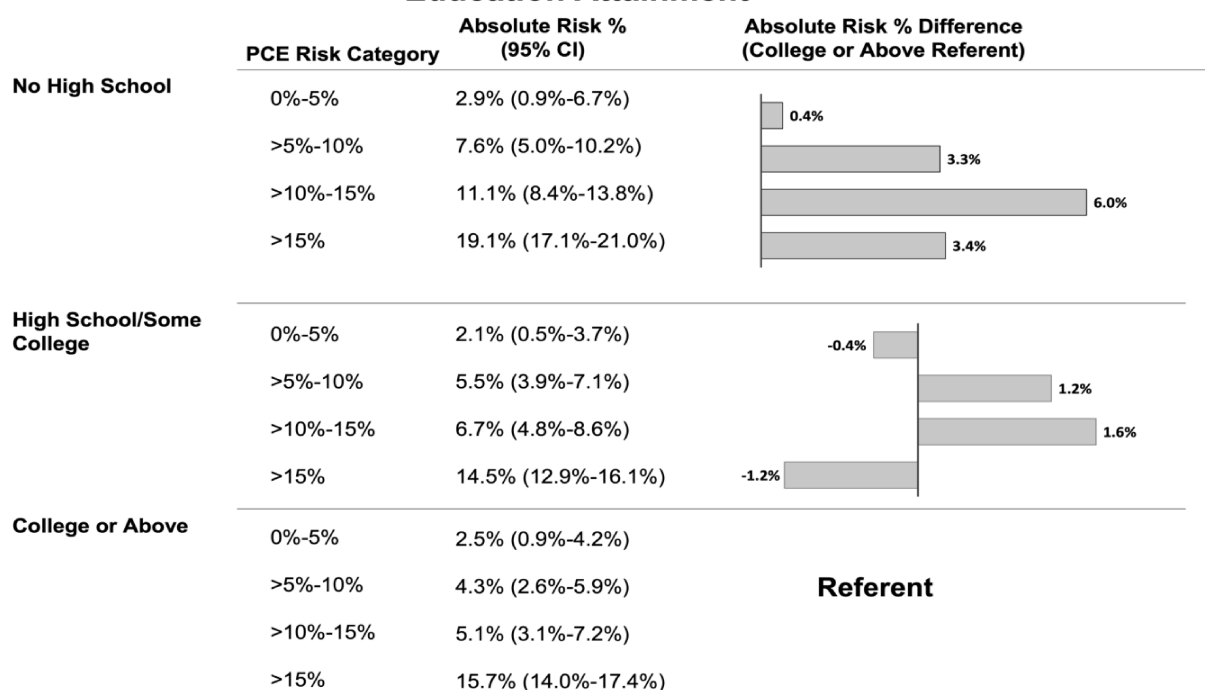
**Supplement Table 1.** Risk Ratios comparing 10-year incident ASCVD event rate across Socioeconomic Status (Education and Area Deprivation Index) within category of predicted risk

	10-Year ASCVD Predicted Risk											
	0%-5%			>5%-10%			>10%-15%			>15%		
	Area Deprivation Index			Area Deprivation Index			Area Deprivation Index			Area Deprivation Index		
	Top ADI Quartile RR (95% CI)	Middle Two ADI Quartile RR (95% CI)	Lowest ADI Quartile RR (95% CI)	Top ADI Quartile RR (95% CI)	Middle Two ADI Quartile RR (95% CI)	Lowest ADI Quartile RR (95% CI)	Top ADI Quartile RR (95% CI)	Middle Two ADI Quartile RR (95% CI)	Lowest ADI Quartile RR (95% CI)	Top ADI Quartile RR (95% CI)	Middle Two ADI Quartile RR (95% CI)	Lowest ADI Quartile RR (95% CI)
<b>No High School*</b>	3.64 (1.46- 9.07)	--	--	1.59 (0.92- 2.76)	1.18 (0.51- 2.72)	1.10 (0.35- 3.48)	4.78 (1.62- 14.09)	1.88 (0.69- 5.15)	4.93 (1.94- 12.50)	1.28 (0.94- 1.74)	1.22 (0.84- 1.77)	1.31 (0.85- 2.02)
<b>High School/Some College</b>	1.23 (0.43- 3.54)	1.23 (0.49- 3.09)	1.07 (0.39- 2.92)	1.04 (0.58- 1.88)	0.69 (0.36- 1.32)	1.48 (0.87- 2.53)	2.28 (0.89- 5.82)	2.48 (0.95- 6.47)	2.52 (0.97- 6.52)	0.95 (0.68- 1.34)	0.90 (0.65- 1.26)	1.08 (0.75- 1.54)
<b>College or Above</b>	1.08 (0.30- 3.87)	2.33 (0.94- 5.75)	1.00	0.66 (0.28- 1.53)	0.62 (0.28- 1.36)	1.00	2.59 (1.00- 6.70)	2.48 (0.97- 6.36)	1.00	1.20 (0.85- 1.69)	0.97 (0.67- 1.40)	1.00

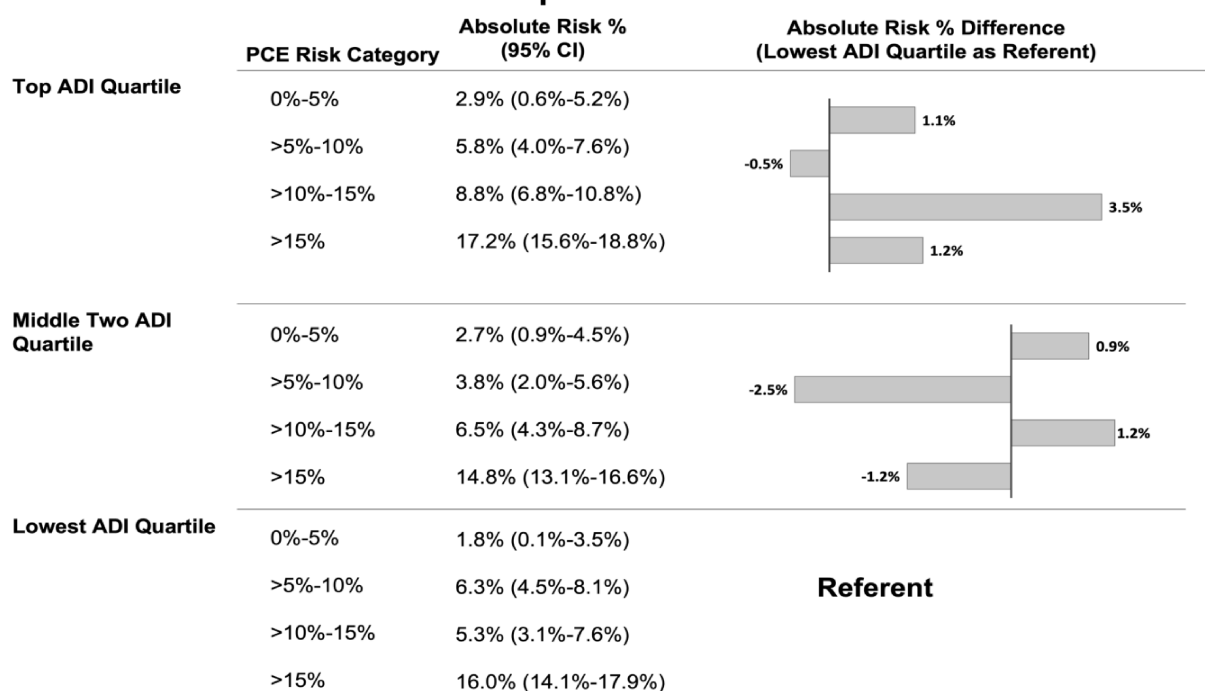
Abbreviations: ADI, Area Deprivation Index; ASCVD, atherosclerotic cardiovascular disease; CI, confidence interval; RR, relative risk.

\*Risk ratio cannot be estimated for social deprivation category at a predicted risk of 0-5% due to lack of ASCVD incidence for category.

### Education Attainment



### Area Deprivation Index



**Supplement Figure 2.** Difference in 10-year absolute risk of ASCVD events between levels of socioeconomic status, conditional on predicted risk category.

Abbreviations: ADI, Area Deprivation Index; ASCVD, atherosclerotic cardiovascular disease

\*Predicted risk categories were estimated using the Pooled Cohort Equations.

