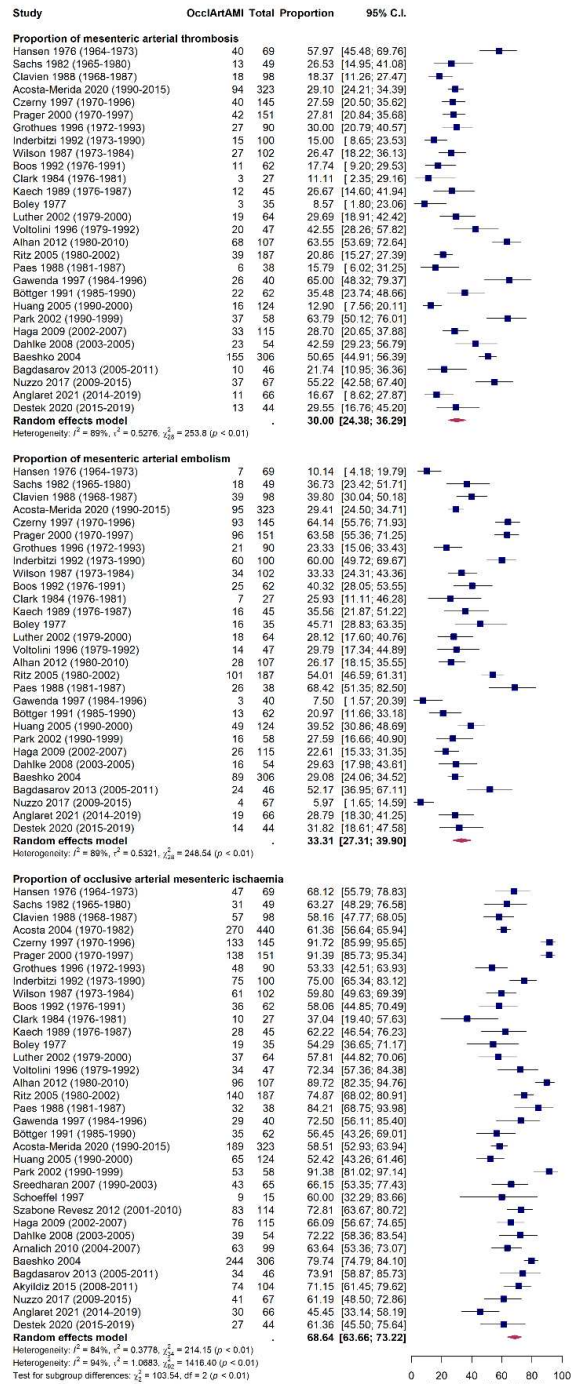
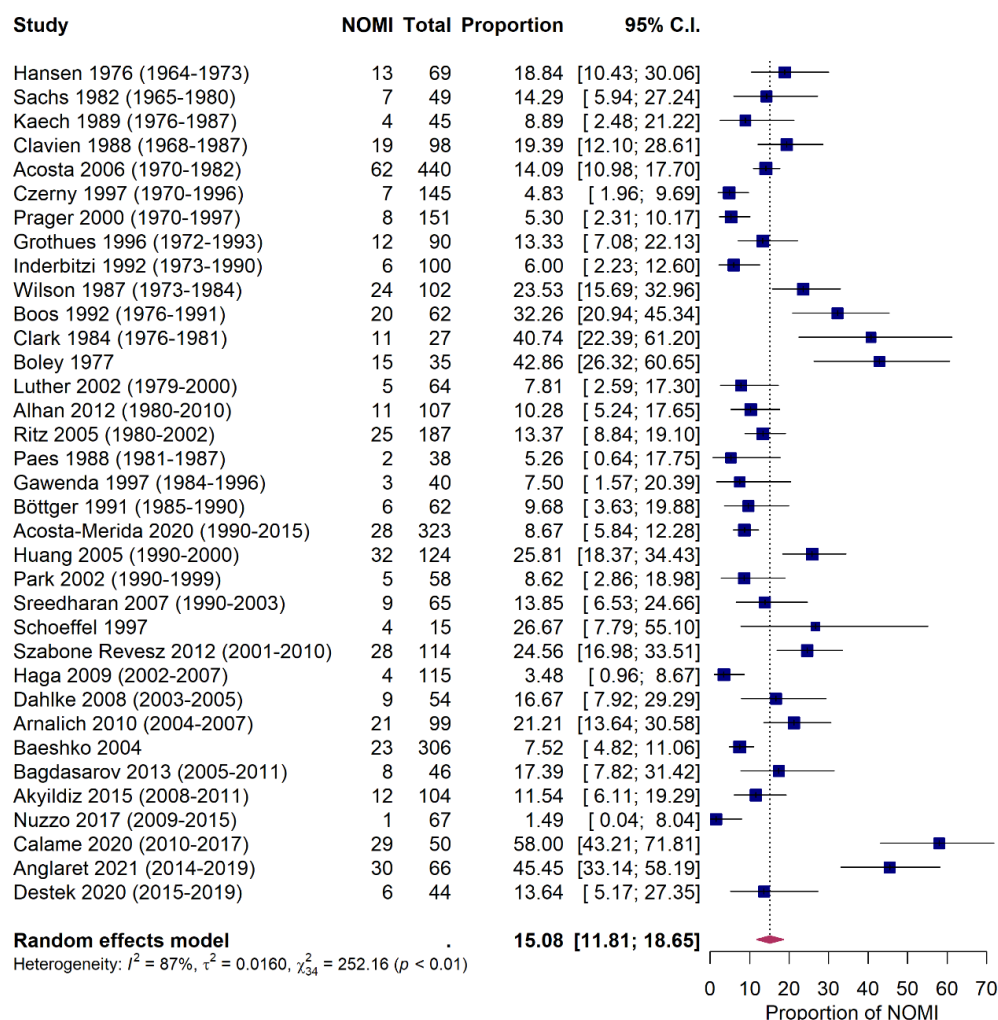


Supplementary Figures.

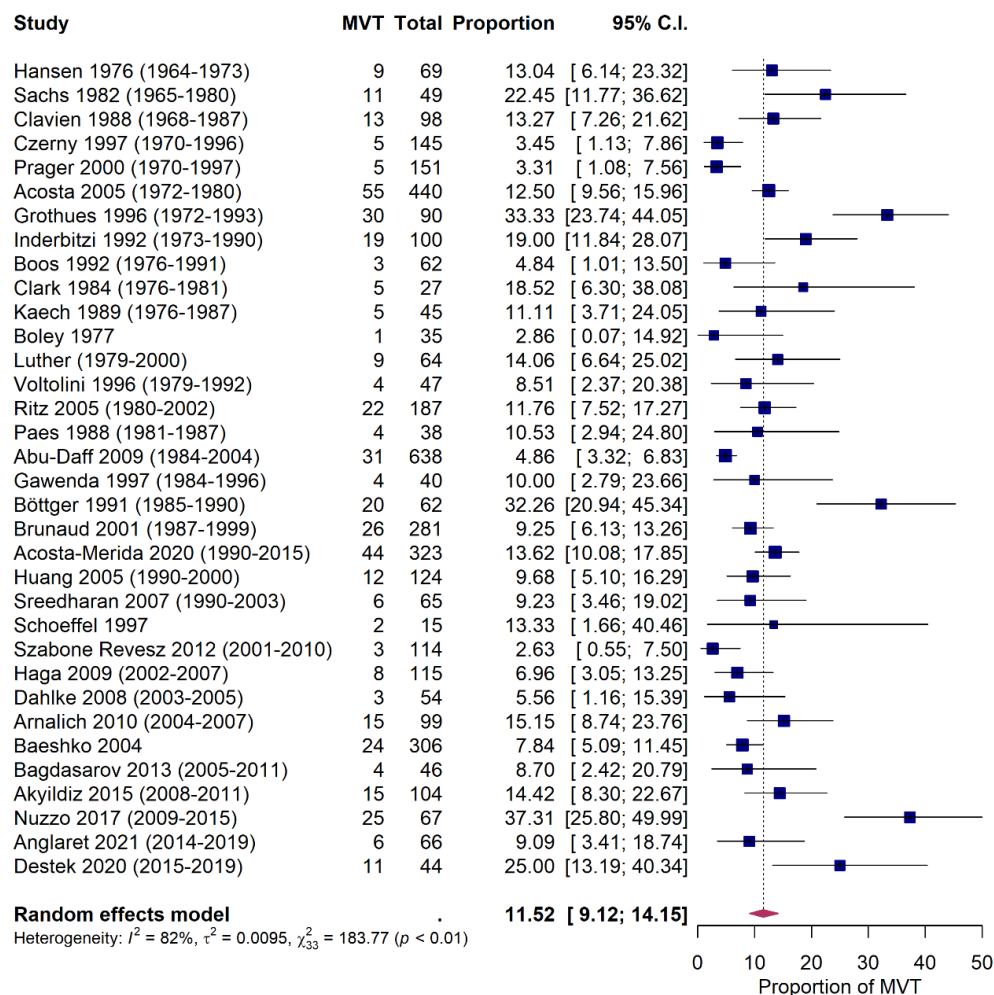
Supplementary Figure 1. Proportions of different forms of acute mesenteric ischaemia.

a. Proportion (%) of occlusive arterial mesenteric ischaemia (OcclArtAMI)

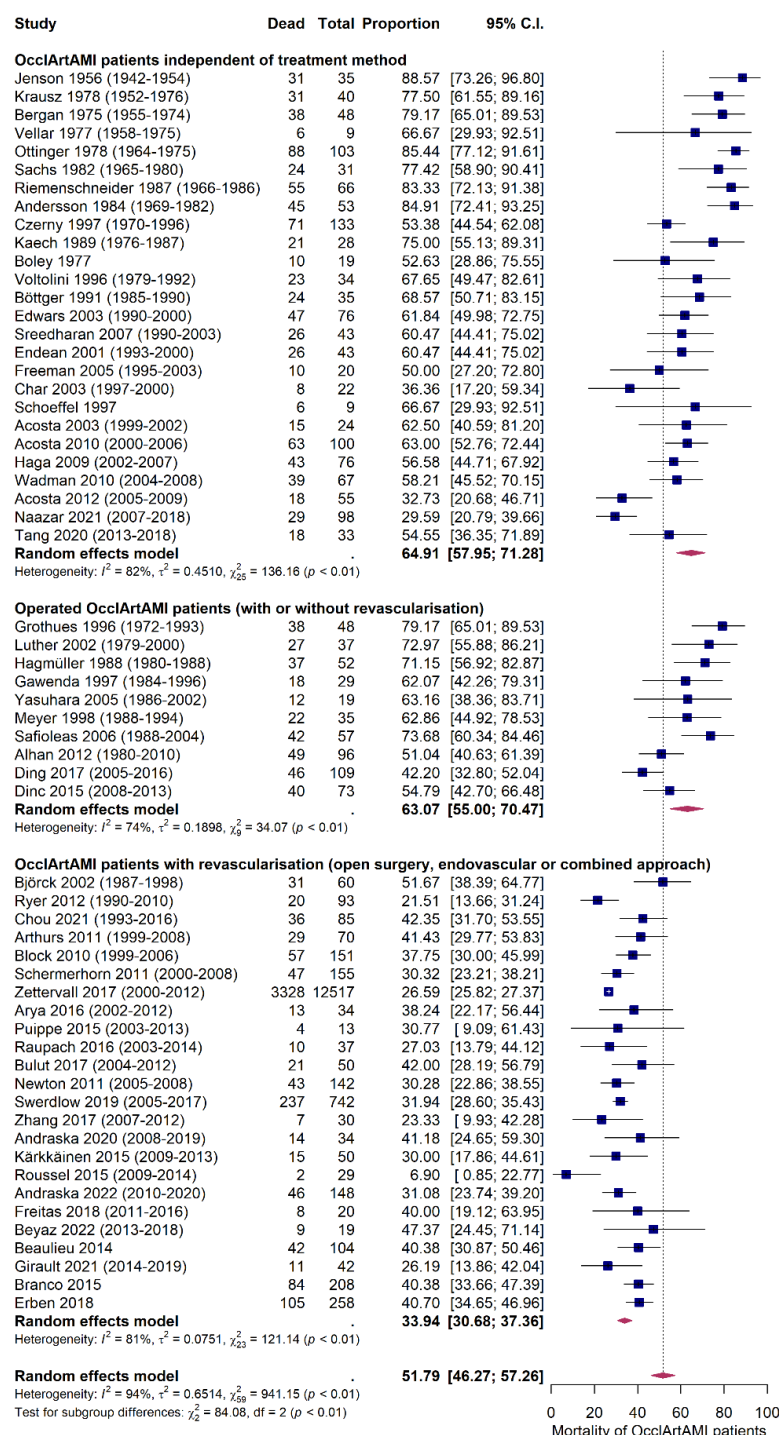


**b. Proportion (%) of non-occlusive mesenteric ischaemia (NOMI)**

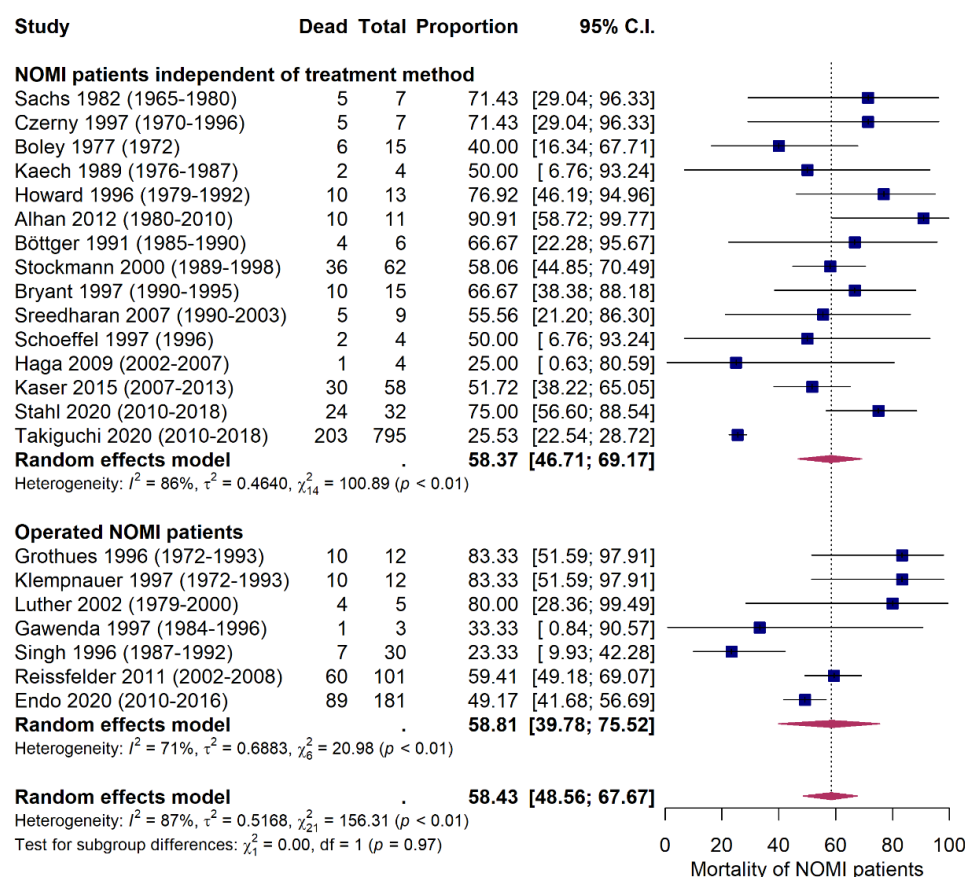
## c. Proportion (%) of venous mesenteric thrombosis (MVT)



**Supplementary Figure 2.** Short-term (hospital or 30-days) mortality of occlusive arterial form of acute mesenteric ischaemia (OcclArtAMI). Selection of the studies is specified in the headings of the panels. In brackets, the period of patient inclusion is indicated.



**Supplementary Figure 3.** Short-term (hospital or 30-days) mortality of non-occlusive mesenteric ischaemia (NOMI). Subgroup analyses of studies including patients independent of treatment method (upper panel), and of studies including only operated patients (lower panel) are presented. In brackets, the period of patient inclusion is indicated.



**Supplementary Figure 4.** Short-term (hospital or 30-days) mortality of mesenteric vein thrombosis (MVT). In brackets, the period of patient inclusion is indicated.

