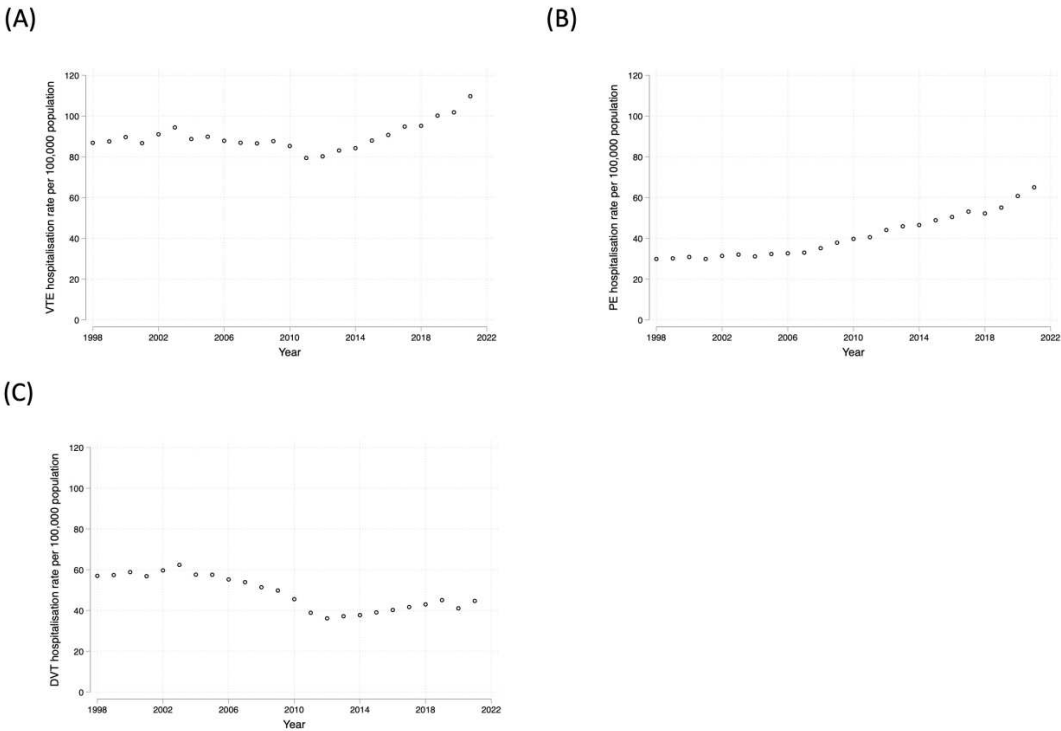
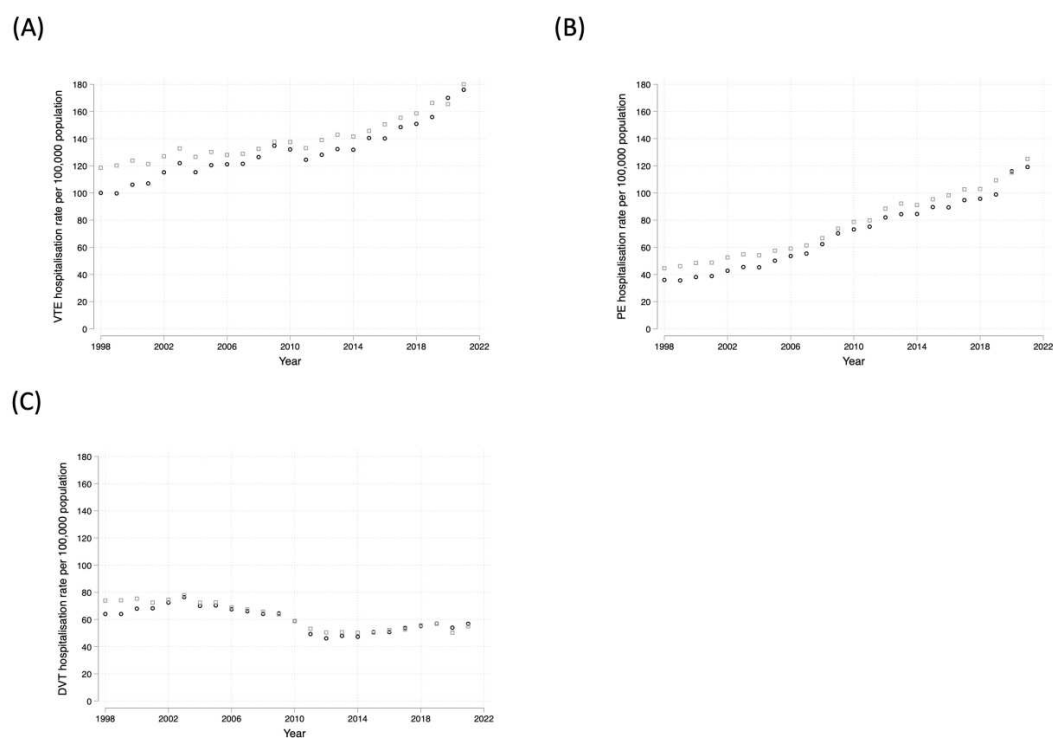


SUPPLEMENTARY MATERIAL

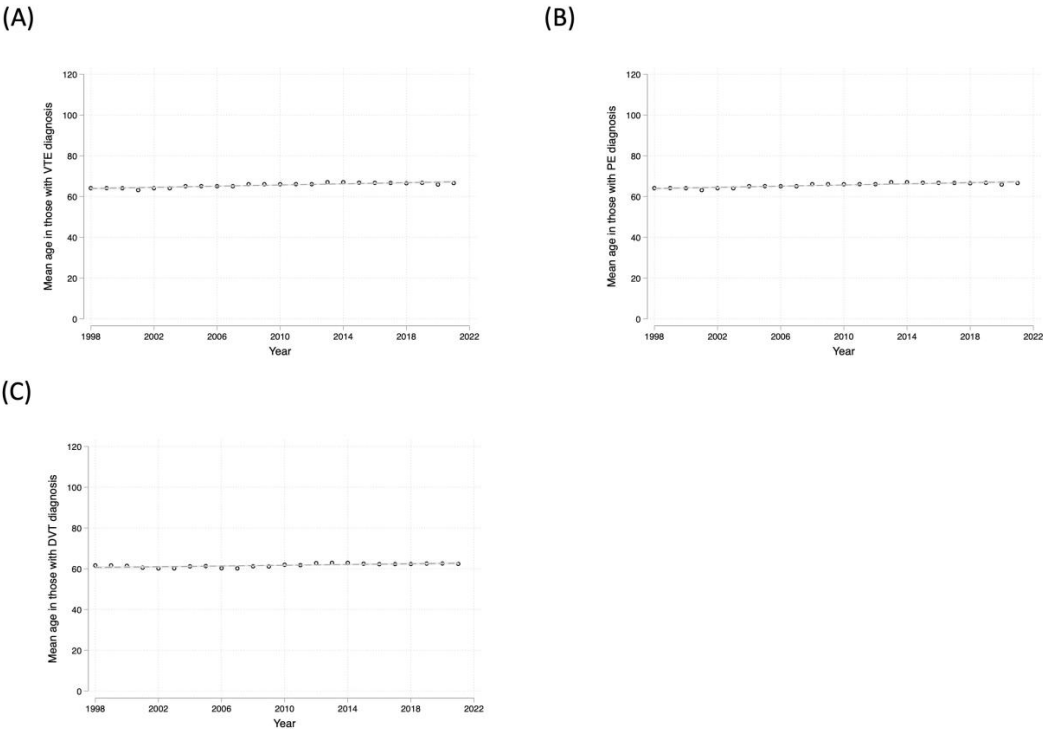
Supplementary Figure 1. Sensitivity analysis, using finished admission episodes rather than finished consultant episodes, to describe the hospitalisation rate per 100,000 population of hospitalisations with primary admission diagnoses of (A) VTE (DVT and PE combined), (B) PE, and (C) DVT in England between 1998 and 2022.



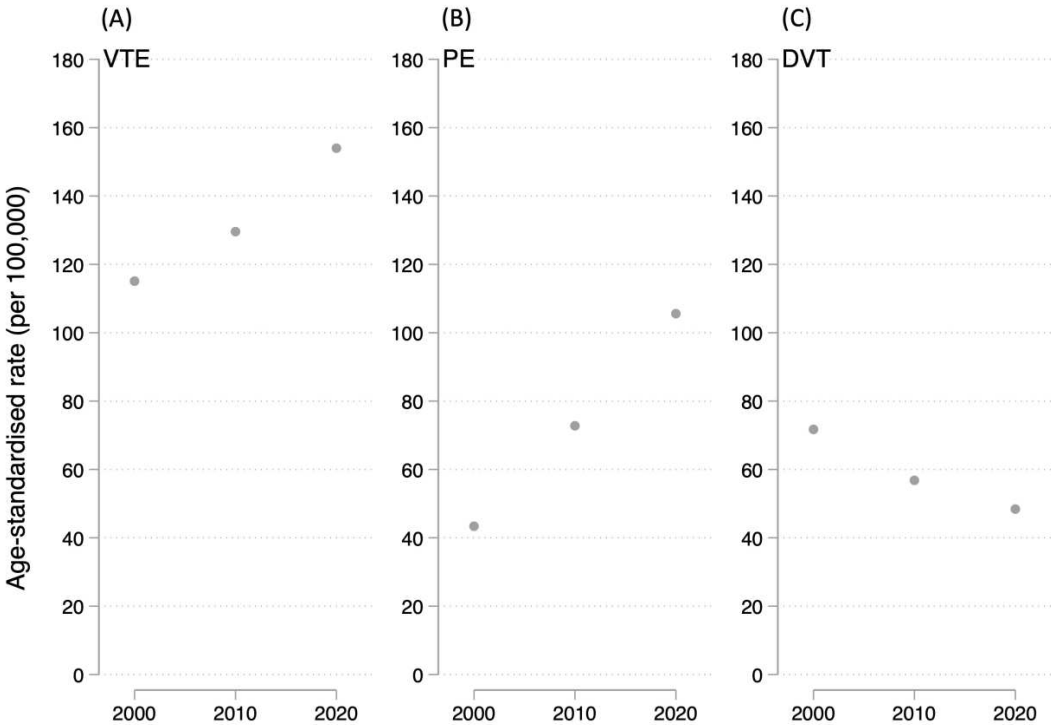
Supplementary Figure 2. Hospitalisation rate of (A) VTE, (B) PE and (C) DVT admissions in males vs. females between 1998 and 2022. Males are denoted by black circles, and females are denoted by grey squares.



Supplementary Figure 3. Mean age of people hospitalised for (A) VTE, (B) PE or (C) DVT diagnoses between 1998 and 2022.



Supplementary Figure 4. Age-standardised rates for (A) VTE, (B) PE and (C) DVT against the year 2000 population.



Supplementary Table 1. Count of finished admission episodes, and corresponding hospitalisation rate per 100,000 population, for VTE (DVT and PE combined), PE and DVT in England between 1998 and 2022.

Year	Number of VTE admission episodes	VTE hospitalisation rate (per 100,000 population)	Number of PE admission episodes	PE hospitalisation rate (per 100,000 population)	Number of DVT admission episodes	DVT hospitalisation rate (per 100,000 population)
1998/99	42397	86.8	14573	29.9	27824	57.0
1999/00	42933	87.6	14781	30.1	28152	57.4
2000/01	44150	89.7	15179	30.8	28971	58.8
2001/02	42873	86.7	14766	29.9	28107	56.8
2002/03	45228	91.0	15573	31.3	29655	59.7
2003/04	47131	94.4	15983	32.0	31148	62.4
2004/05	44540	88.7	15621	31.1	28919	57.6
2005/06	45474	89.9	16347	32.3	29127	57.6
2006/07	44783	87.9	16629	32.6	28154	55.2
2007/08	44639	86.9	16948	33.0	27691	53.9
2008/09	44857	86.6	18214	35.2	26643	51.4
2009/10	45763	87.7	19763	37.9	26000	49.8
2010/11	44891	85.3	20908	39.7	23983	45.6
2011/12	42179	79.4	21525	40.5	20654	38.9
2012/13	42916	80.2	23578	44.1	19338	36.2
2013/14	44758	83.1	24725	45.9	20033	37.2
2014/15	45757	84.2	25260	46.5	20497	37.7
2015/16	48184	87.9	26777	48.9	21407	39.1
2016/17	50142	90.7	27888	50.5	22254	40.3
2017/18	52736	94.8	29541	53.1	23195	41.7
2018/19	53289	95.2	29227	52.2	24062	43.0
2019/20	56396	100.2	31009	55.1	25387	45.1
2020/21	57586	101.8	34353	60.7	23233	41.1
2021/22	62036	109.7	36757	65.0	25279	44.7

Supplementary Table 2. Primary admission diagnoses of VTE, PE and DVT as a percentage of all-cause hospital admissions between 1998-2022.

Year	All-cause admissions	VTE admissions	VTE as % of all-cause admissions	PE admissions	PE as % of all-cause admissions	DVT admissions	DVT as % of all-cause admissions
1998/99	11983893	53473	0.45	19739	0.16	33734	0.28
1999/00	12167574	54038	0.44	20093	0.17	33945	0.28
2000/01	12264677	56703	0.46	21379	0.17	35324	0.29
2001/02	12357360	56533	0.46	21705	0.18	34828	0.28
2002/03	12757656	60197	0.47	23699	0.19	36498	0.29
2003/04	13174480	63569	0.48	25062	0.19	38507	0.29
2004/05	13706765	60655	0.44	24951	0.18	35704	0.26
2005/06	14423506	63304	0.44	27205	0.19	36099	0.25
2006/07	14784581	63258	0.43	28611	0.19	34647	0.23
2007/08	15359062	64008	0.42	29877	0.19	34131	0.22
2008/09	16232579	66656	0.41	33231	0.20	33425	0.21
2009/10	16806196	70603	0.42	37333	0.22	33270	0.20
2010/11	17269882	70974	0.41	39987	0.23	30987	0.18
2011/12	17465425	68414	0.39	41176	0.24	27238	0.16
2012/13	17715046	71490	0.40	45626	0.26	25864	0.15
2013/14	18163101	74183	0.41	47594	0.26	26589	0.15
2014/15	18731987	74264	0.40	47734	0.25	26530	0.14
2015/16	19239608	78426	0.41	50696	0.26	27730	0.14
2016/17	19726907	80373	0.41	51894	0.26	28479	0.14
2017/18	20030870	84532	0.42	54919	0.27	29613	0.15
2018/19	20760699	86647	0.42	55626	0.27	31021	0.15
2019/20	20912276	90712	0.43	58636	0.28	32076	0.15
2020/21	16168689	94874	0.59	65389	0.40	29485	0.18
2021/22	19626344	100665	0.51	69064	0.35	31601	0.16

Supplementary Table 3. Proportion of all VTE diagnoses (primary and secondary) where VTE was listed as the primary admission diagnosis, between 2012 and 2022.

Year	Primary and secondary VTE diagnoses (hospitalisation rate per 100,000 population)	Primary VTE diagnoses only (hospitalisation rate per 100,000 population)	Proportion primary VTE diagnoses (%)
2012/13	251.9	133.6	53.0
2013/14	264.9	137.7	52.0
2014/15	269.8	136.7	50.7
2015/16	290.8	143.1	49.2
2016/17	305.7	145.4	47.6
2017/18	325.4	152.0	46.7
2018/19	338.4	154.8	45.7
2019/20	349.1	161.2	46.2
2020/21	393.3	167.8	42.7
2021/22	401.2	178.1	44.4

Supplementary Table 4. Proportion of all PE diagnoses (primary and secondary) where PE was listed as the primary admission diagnosis, between 2012 and 2022.

Year	Primary and secondary PE diagnoses (hospitalisation rate per 100,000 population)	Primary PE diagnoses only (hospitalisation rate per 100,000 population)	Proportion primary PE diagnoses (%)
2012/13	147.8	85.3	57.7
2013/14	156.0	88.4	56.6
2014/15	159.8	87.9	55.0
2015/16	173.6	92.5	53.3
2016/17	183.7	93.9	51.1
2017/18	195.2	98.7	50.6
2018/19	201.3	99.4	49.4
2019/20	211.4	104.2	49.3
2020/21	265.1	115.6	43.6
2021/22	267.0	122.2	45.7

Supplementary Table 5. Proportion of all DVT diagnoses (primary and secondary) where DVT was listed as the primary admission diagnosis, between 2012 and 2022.

Year	Primary and secondary DVT diagnoses (hospitalisation rate per 100,000 population)	Primary DVT diagnoses only (hospitalisation rate per 100,000 population)	Proportion primary DVT diagnoses (%)
2012 /13	104.1	48.3	46.4
2013/14	108.9	49.4	45.3
2014/15	110.0	48.8	44.4
2015/16	117.2	50.6	43.2
2016/17	122.0	51.5	42.2
2017/18	130.3	53.2	40.9
2018/19	137.1	55.4	40.4
2019/20	137.7	57.0	41.4
2020/21	128.2	52.1	40.7
2021/22	134.1	55.9	41.7