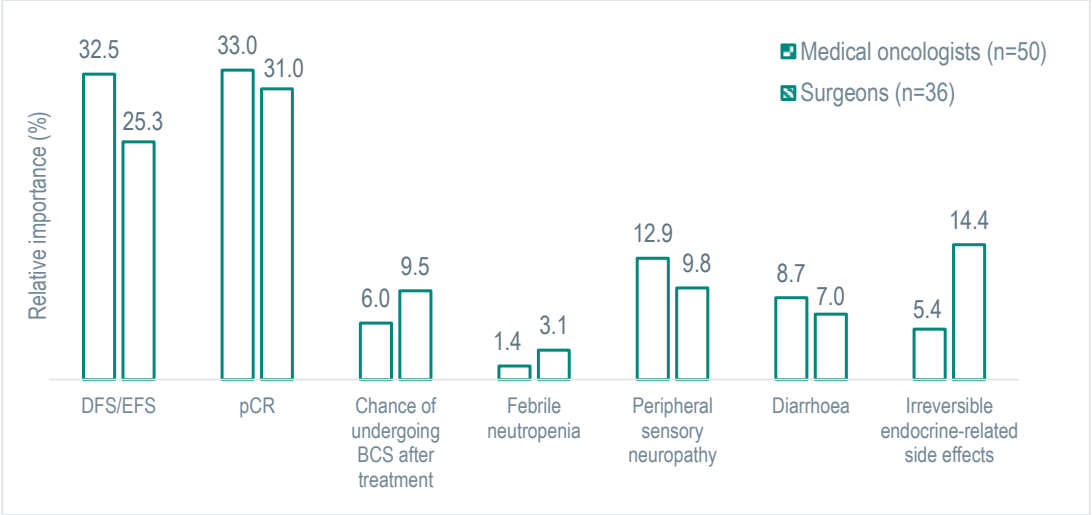


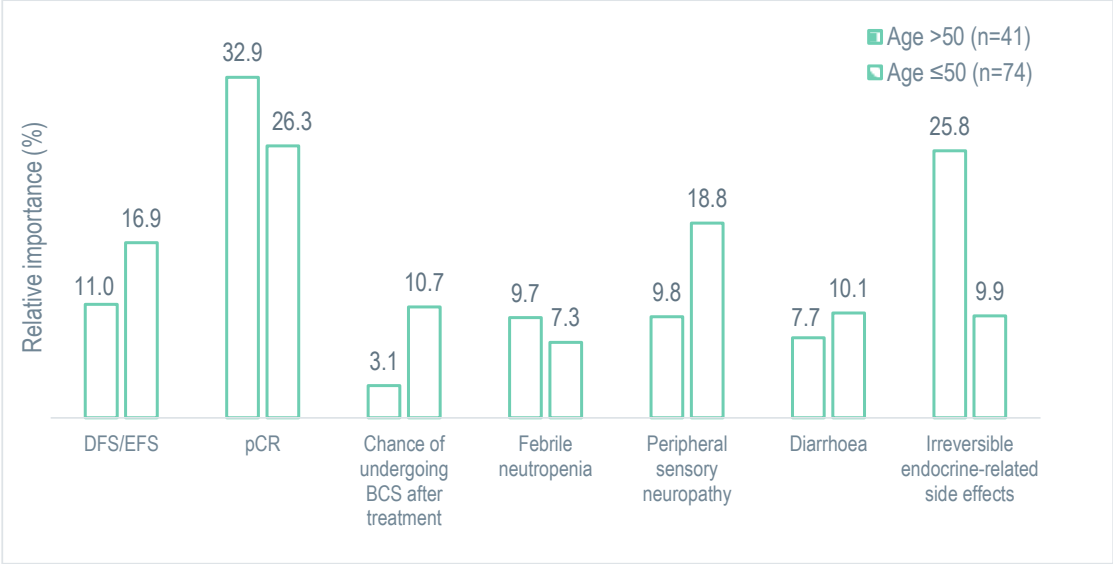
Supplemental Figure 1. Sample of DCE questionnaire

Attribute	Regimen A	Regimen B
Median disease-free/ event-free survival	12 months free of cancer, recurrence, progression, complications or death.	24 months free of cancer, recurrence, progression, complications or death.
Pathological complete response (pCR)	70% probability of achieving pCR 	30% probability of achieving pCR 
Chance of undergoing breast conserving surgery (BCS) after receiving this anticancer treatment	70% chance of undergoing BCS 	30% chance of undergoing BCS 
Febrile Neutropenia	5% risk of experiencing febrile neutropenia 	20% risk of experiencing febrile neutropenia 
Peripheral sensory neuropathy	5% risk of experiencing peripheral sensory neuropathy 	20% risk of experiencing peripheral sensory neuropathy 
Diarrhoea	50% risk of experiencing diarrhea 	10% risk of experiencing diarrhea 
Irreversible endocrine-related side effects requiring lifelong medication	8% chance of developing irreversible endocrine-related side effects 	0% chance of developing irreversible endocrine-related side effects 
If these were your only options, which treatment regimen would you choose? Select the box to indicate your choice. <a href="#">[Single select]</a>	<input type="checkbox"/>	<input type="checkbox"/>

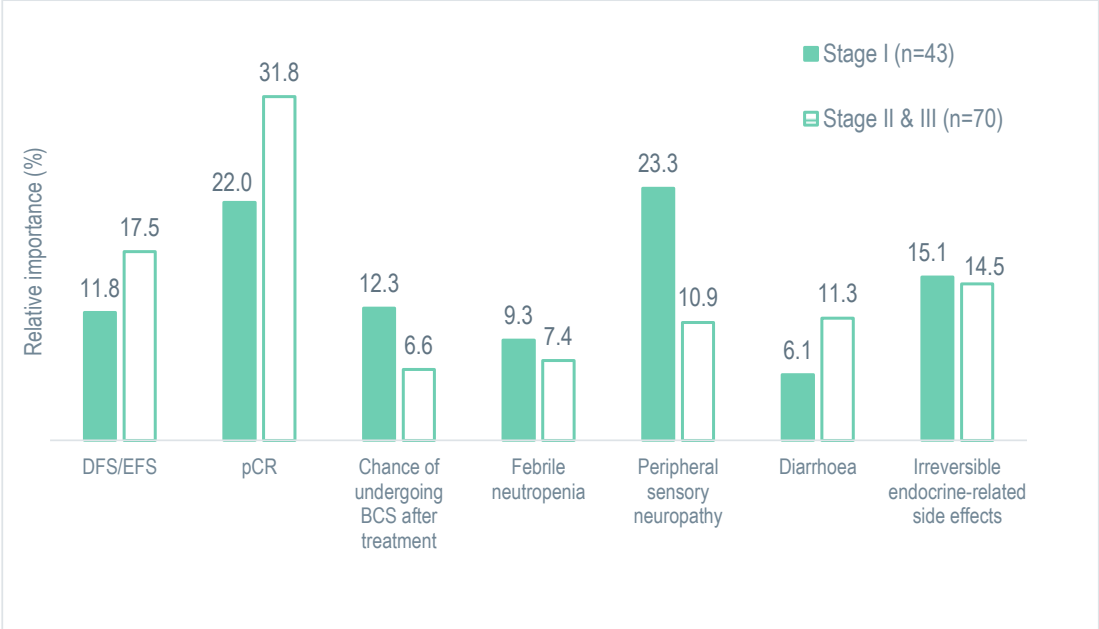
**Supplemental Figure 2. Relative importance of attributes in medical oncologists and surgeons.** BCS, breast-conserving surgery; DFS/ EFS, disease free survival/ event-free survival; pCR, pathological complete response.



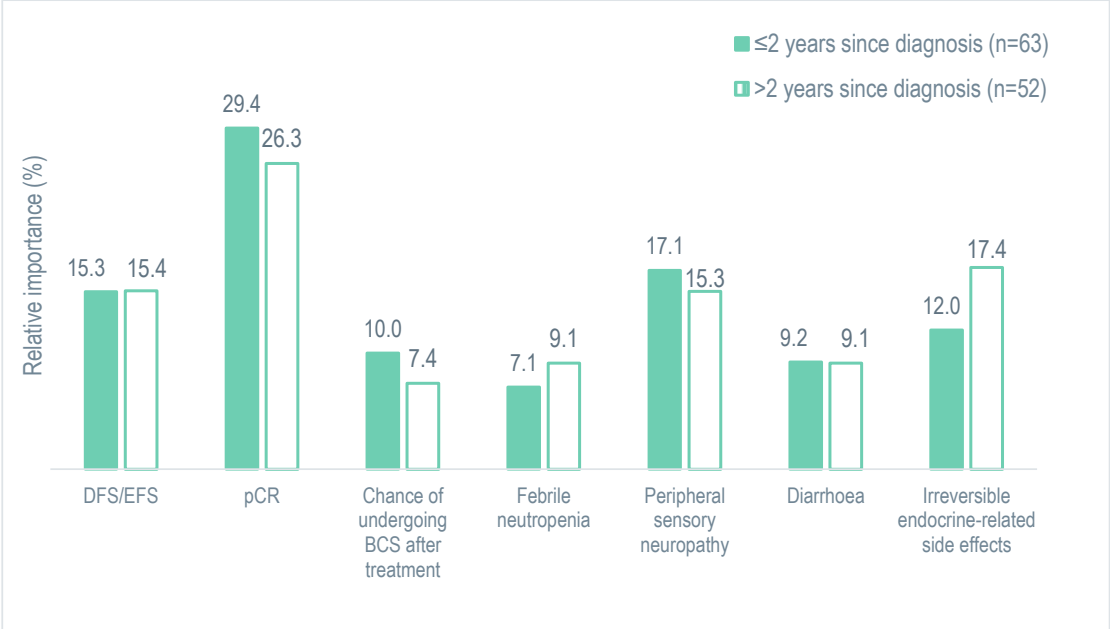
**Supplemental Figure 3. Relative importance of attributes in patients younger than and above 50 years of age.** BCS, breast-conserving surgery; DFS/ EFS, disease free survival/ event-free survival; pCR, pathological complete response.



**Supplemental Figure 4. Relative importance of attributes in patients diagnosed at stage I and stages II and III.** BCS, breast-conserving surgery; DFS/ EFS, disease free survival/ event-free survival; pCR, pathological complete response.



**Supplemental Figure 5. Relative importance of attributes in eTNBC patients who were diagnosed within and more than 2 years prior to study participation.** BCS, breast-conserving surgery; DFS/ EFS, disease free survival/ event-free survival; pCR, pathological complete response.



**Supplemental Figure 6. Relative importance of attributes in patients who were receiving chemotherapy and non-chemotherapy options during study participation.** Non-chemotherapy includes radiation therapy (n=3), surgery (n=6), don't know and not receiving treatment (n=37). BCS, breast-conserving surgery; DFS/ EFS, disease free survival/ event-free survival; pCR, pathological complete response.

