



BMJ Open is committed to open peer review. As part of this commitment we make the peer review history of every article we publish publicly available.

When an article is published we post the peer reviewers' comments and the authors' responses online. We also post the versions of the paper that were used during peer review. These are the versions that the peer review comments apply to.

The versions of the paper that follow are the versions that were submitted during the peer review process. They are not the versions of record or the final published versions. They should not be cited or distributed as the published version of this manuscript.

BMJ Open is an open access journal and the full, final, typeset and author-corrected version of record of the manuscript is available on our site with no access controls, subscription charges or pay-per-view fees (<http://bmjopen.bmj.com>).

If you have any questions on BMJ Open's open peer review process please email info.bmjopen@bmj.com

BMJ Open

FERN: Is it possible to conduct a Randomised controlled trial of Intervention or Expectant Management for Early Onset Selective Fetal Growth Restriction in Monochorionic Twin Pregnancy: a feasibility study

Journal:	<i>BMJ Open</i>
Manuscript ID	bmjopen-2023-080021
Article Type:	Protocol
Date Submitted by the Author:	18-Sep-2023
Complete List of Authors:	<p>Khalil, Asma; St. George's Medical School, University of London, PRASAD, SMRITI; Indraprastha Apollo Hospital, Fetal Medicine and Genetics</p> <p>Woolfall, Kerry; University of Liverpool, Institute of Population, Health and Society</p> <p>Mitchell, Tracy; University of Liverpool, Public Health, Policy and Systems</p> <p>Kirkham, Jamie J.; Manchester University, Biostatistics</p> <p>Yaghi, Odai; St George's University Hospital</p> <p>Ricketts, Tracey; University of Liverpool, Department of Women's and Children's Health</p> <p>Attilakos, George; University College London Hospitals NHS Foundation Trust</p> <p>Bailie, Carolyn; Royal Jubilee Maternity Hospital</p> <p>Cornforth, Christine; University of Liverpool, Department of Women's and Children's Health</p> <p>Denbow, Mark; University Hospitals Bristol NHS Foundation Trust</p> <p>Hardman, Louise; Liverpool Women's NHS Foundation Trust</p> <p>Harrold, Jane; University of Liverpool, Department of Women's and Children's Health</p> <p>Parasuraman, Rajeswari; Princess Anne Hospital</p> <p>Leven, Shauna; The Manor House</p> <p>Marsden, Joel; NA</p> <p>Mendoza, Jessica; NA</p> <p>Mousa, Tommy; University of Leicester</p> <p>Nanda, Surabhi; Guy's and St Thomas's Hospital</p> <p>Thilaganathan, Baskaran; St George's University Hospitals NHS Foundation Trust, Department of Obstetrics and Gynaecology</p> <p>Turner, Mark; University of Liverpool, Department of Women's and Children's Health</p> <p>Watson, Michelle; NA</p> <p>Wilding, Karen; University of Liverpool, Clinical Directorate, Faculty of Health and Life Sciences</p> <p>Popa, Mariana; University of Liverpool, Institute of Life and Human Sciences</p> <p>Alfirevic, Zarko; University of Liverpool, Department of Women's and Children's Health</p> <p>Anumba, Dilly; University of Sheffield</p> <p>Ashcroft, Richard; City University of London, School of Law</p>

	Baschet, Ahmet; JHM da Silva Costa, Fabrício ; Griffith University Deprest, Jan; University Hospital Leuven, Gynaecology Fenwick, Natasha; Twins Trust, Research and Resources Officer Haak, Monique; Leiden University Medical Center, Obstetrics and Gynaecology Healey, Andy; King's College London, IOPPN Hecher, Kurt; University Medical Center Hamburg-Eppendorf, Department of Obstetrics and Fetal Medicine Impey, Lawrence; Oxford University Hospitals NHS Trust, Department of Fetal Medicine Jackson, Richard; University of Liverpool, Liverpool Clinical Trials Centre Johnstone, Edward; The University of Manchester, Maternal & Fetal Health Research Centre; St Mary's Hospital, Obstetrics Lewi, Liesbeth; University Hospitals Leuven, Fetal Medicine Unit Lopriore, Enrico; Leiden University Medical Center, Pediatrics Papageorgiou, Aris; University of Oxford, Nuffield Department of Women's & Reproductive Health; University of Oxford, Oxford Maternal & Perinatal Health Institute, Green Templeton College, Pasupathy, Dharmintra; King's College London, Women's Health Academic Centre Sandall, Jane; Kings College, London, Health and Social Care Research Division Sharp, Andrew; University of Liverpool Thangaratinam, Shakila; Queen Mary University of London, BARC (Barts Research Centre for Women's Health), Blizard Institute, Barts and the London School of Medicine and Dentistry; University of Birmingham, Institute of Metabolism and Systems Research Vollmer, B; University of Southampton Yinon, Yoav; Tel Aviv University
Keywords:	SURGERY, Mortality, Clinical Trial, Fetal medicine < OBSTETRICS, OBSTETRICS

SCHOLARONE™
Manuscripts

TITLE

FERN: Is it possible to conduct a Randomised controlled trial of Intervention or Expectant Management for Early Onset Selective Fetal Growth Restriction in Monochorionic Twin Pregnancy: a feasibility study

Asma Khalil^{1,2,3}, Smriti Prasad¹, Kerry Woolfall⁴, Tracy Karen Mitchell⁴, Jamie Kirkham⁵, Odai Yaghi¹, Tracey Ricketts⁶, Mariana Popa⁴, Zarko Alfirevic⁶, Dilly Anumba⁷, Richard Ashcroft⁸, George Attilakos⁹, Carolyn Bailie¹⁰, Ahmet A Baschat¹¹, Christine Cornforth⁶, Fabricio Da Silva Costa¹², Mark Denbow¹³, Jan Deprest¹⁴, Natasha Fenwick¹⁵, Monique C Haak¹⁶, Louise Hardman¹⁷, Jane Harrold⁶, Andy Healey¹⁸, Kurt Hecher¹⁹, Rajeswari Parasuraman²⁰, Lawrence Impey²¹, Richard Jackson²², Edward Johnstone²³, Shauna Leven¹⁵, Liesbeth Lewi¹⁴, Enrico Lopriore²⁴, Joel Marsden²⁵, Jessica Mendoza²⁵, Tommy Mousa²⁶, Surabhi Nanda²⁷, Aris Papageorgiou²⁸, Dharmindra Pasupathy²⁹, Jane Sandall³⁰, Andrew Sharp⁶, Shakila Thangaratinam^{31,32,33}, Baskaran Thilaganathan³⁴, Mark Turner⁶, Brigitte Vollmer³⁵, Michelle Watson²⁵, Karen Wilding³⁶, Yoav Yinon³⁷ for FERN study team

¹Fetal Medicine Unit, St George's University Hospital, London, UK

²Vascular Biology Research Centre, Molecular and Clinical Sciences Research Institute, St George's University of London, London, UK

³Fetal Medicine Unit, Liverpool Women's Hospital, University of Liverpool, Liverpool, UK

⁴Institute of Population Health, Department of Public Health, Policy and Systems, University of Liverpool

⁵Centre for Biostatistics, The University of Manchester, Manchester Academic Health Science Centre, Manchester, United Kingdom

⁶Harris Wellbeing of Women Research Centre, Department of Women's and Children's Health, Faculty of Health & Life Sciences, University of Liverpool

⁷Academic Unit of Reproductive and Developmental Medicine, Department of Human Metabolism, University of Sheffield, Level 4, Jessop Wing, Tree Root Walk, Sheffield S10 2SF, UK.

⁸Executive Dean and Professor, City Law School, University of London

⁹Women's Health Division, University College London Hospitals NHS Foundation Trust, London, UK; Institute for Women's Health, University College London, London, UK.

¹⁰ Fetal Medicine, Royal Jubilee Maternity Hospital, Grosvenor Road, Belfast, BT12 6BB, UK.

¹¹ Johns Hopkins Center for Fetal Therapy Department of Gynecology & Obstetrics Johns Hopkins University Baltimore, MD, 21287, USA

¹² Maternal Fetal Medicine Unit, Gold Coast University Hospital, Gold Coast, QLD, Australia

¹³ Fetal Medicine Unit, St Michael's Hospital, University Hospitals Bristol NHS Foundation Trust, Bristol, United Kingdom.

¹⁴ Fetal Medicine Unit, Dept. Obstetrics and Gynecology, University Hospitals Leuven, Herestraat 49, 3000 Leuven, Belgium;Dept of Development and Regeneration, Biomedical Sciences, KU Leuven, Leuven, Belgium.

¹⁵ Twins Trust, The Manor House, Aldershot GU12 4JU, UK

¹⁶ Department of Obstetrics, Fetal Medicine Unit, Leiden University Medical Center, Leiden, The Netherlands.

¹⁷Liverpool Women's NHS Foundation Trust, Crown Street, Liverpool, L8 7SS, UK

¹⁸ King's Health Economics, Health Service, and Population Research Department, King's College London, London United Kingdom

¹⁹ University Medical Center Hamburg-Eppendorf, Department of Obstetrics and Fetal Medicine, Hamburg, Germany

²⁰ Wessex Fetal Maternal Medicine unit, University Southampton NHS Foundation Trust, Princess Anne Hospital, Southampton, UK

²¹ Department of Fetal Medicine, John Radcliffe Hospital, Oxford University Hospitals NHS Foundation Trust, Oxford OX3 9DU, UK

²² Department of Statistics, Liverpool Clinical Trials Unit, University of Liverpool, United Kingdom

²³ Maternal and Fetal Health Research Centre, Division of Developmental Biology and Medicine, School of Medical Sciences, Faculty of Medicine Biology and Health, University of Manchester, Manchester M13 0WL, UK

²⁴ Department of Paediatrics, Division of Neonatology, Leiden University Medical Center, Leiden, The Netherlands

²⁵ PPIE co-applicant, FERN project

²⁶ Consultant/Honorary Senior Lecturer in Maternal and Fetal Medicine, University of Leicester, United Kingdom

²⁷ Fetal Medicine Unit, Guy's and St Thomas's Hospital, London, UK

²⁸ Nuffield Department of Women's & Reproductive Health, University of Oxford, Oxford, UK.

²⁹ Reproduction and Perinatal Centre, Faculty of Medicine and Health, The University of Sydney, Sydney, New South Wales, Australia

³⁰ Division of Women's Health, King's College, London, Women's Health Academic Centre, King's Health Partners, 10th Floor, North Wing, St. Thomas' Hospital, Westminster Bridge Road, London, UK

³¹ WHO Collaborating Centre for Global Women's Health, Institute of Metabolism and Systems Research, University of Birmingham, Birmingham, UK

³² NIHR Biomedical Research Centre, University Hospitals Birmingham, UK

³³ Birmingham Women's and Children's NHS Foundation Trust, Birmingham, UK

³⁴ Director, Fetal Medicine Unit, Department of Obstetrics and Gynaecology, St George's University Hospitals NHS Foundation Trust, London, United Kingdom

³⁵ Clinical Neurosciences, Faculty of Medicine, University of Southampton, Southampton, UK

³⁶ University of Liverpool, Clinical Directorate, Faculty of Health and Life Sciences, Brownlow Hill, Liverpool, L69 3BX

³⁷ Department of Obstetrics and Gynecology, Chaim Sheba Medical Center, Tel-Hashomer, Ramat-Gan 52621, Israel.

Corresponding author:

Professor Asma Khalil MRCOG MD MSc (Epi) DFRH Dip (GUM)

Fetal Medicine Unit

Department of Obstetrics and Gynaecology

St. George's University Hospitals NHS Foundation Trust

Blackshaw Road

London SW17 0QT

United Kingdom.

Email address: asmakhalil79@googlemail.com; akhalil@sgul.ac.uk

Phone: 020 8725 01924

1
2
3
4
5
6
7
8
9
10
11
12
13
14
15
16
17
18
19
20
21
22
23
24
25
26
27
28
29
30
31
32
33
34
35
36
37
38
39
40
41
42
43
44
45
46
47
48
49
50
51
52
53
54
55
56
57
58
59
60

Keywords: Twin, multiple, pregnancy, monochorionic, selective, fetal growth restriction, stillbirth, intrauterine demise, neonatal, laser, surgery, morbidity, mortality, clinical trial

For peer review only

Enseignement Supérieur (ABES).
Protected by copyright, including for uses related to text and data mining, AI training, and similar technologies.

ABSTRACT

INTRODUCTION:

Selective Fetal Growth Restriction (sFGR) in monochorionic twin pregnancy, defined as an estimated fetal weight (EFW) of one twin <10th centile and EFW discordance $\geq 25\%$, is associated with stillbirth and neurodisability for both twins. The condition poses unique management difficulties: on the one hand, continuation of the pregnancy carries a risk of death of the smaller twin, with a high risk of co-twin demise (40%) or co-twin neurological sequelae (30%). On the other, early delivery to prevent death of the smaller twin may expose the larger twin to prematurity, with the associated risks of long-term physical, emotional, and financial cost from neurodisability, such as cerebral palsy.

When there is severe and early sFGR, before viability, delivery is not an option. In this scenario there are currently three main management options: (1) Expectant management (2) Selective termination of the smaller twin (3) Placental laser photocoagulation of interconnecting vessels. These management options have never been investigated in a randomised controlled trial (RCT). The best management option is unknown, and there are many challenges for a potential RCT. These include the rarity of the condition resulting in a small number of eligible pregnancies, uncertainty whether pregnant women will agree to participate in such a trial and whether they will agree to be randomised to expectant management or active fetal intervention, and the challenges of a robust and long-term outcome measures. Therefore, the main objective of the FERN study is to assess the feasibility of conducting an RCT of active intervention versus expectant management in monochorionic twin pregnancies with early onset (prior to 24 weeks) sFGR.

1
2
3
4
5
6
7
8
9
10
11
12
13
14
15
16
17
18
19
20
21
22
23
24
25
26
27
28
29
30
31
32
33
34
35
36
37
38
39
40
41
42
43
44
45
46
47
48
49
50
51
52
53
54
55
56
57
58
59
60

METHODS AND ANALYSIS: The FERN study is a prospective mixed-methods feasibility study. The primary objective is to recommend whether an RCT of intervention versus expectant management of sFGR in monochorionic twin pregnancy is feasible by exploring women’s preference, clinician’s preference, current practice and equipoise and numbers of cases. To achieve this, we propose three distinct Work Packages (WPs). WP1: A Prospective UK Multicentre Study, WP2A: a Qualitative Study Exploring Parents’ and Clinicians’ Views and WP3: a Consensus Development to Determine Feasibility of a Trial. Eligible pregnancies will be recruited to WP1 and WP2, which will run concurrently. The results of these two WPs will be utilized in WP3 to develop consensus on a future definitive study. The duration of the study will be 27 months, comprised of 6 months set-up, 18 months recruitment / data collection, and 3 months data analysis, report writing and recommendations.

ETHICS AND DISSEMINATION: This study has received ethical approval from the Health Research Authority (HRA) South West - Cornwall and Plymouth Ethics Committee (REC reference 20/SW/0156, IRAS ID 286337). All participating sites will undergo site specific approvals for assessment of capacity and capability by the HRA. The results of this study will be published in peer-reviewed journals and presented at national and international conferences. The results from the FERN project will be used to inform future studies.

TRIAL REGISTRATION: This study is included on the ISRCTN Registry (ISRCTN16879394) and, the NIHR Central Portfolio Management System (CPMS), CRN: Reproductive Health and Childbirth Specialty (UKCRN reference 47201).

Protected by copyright, including for uses related to text and data mining, AI training, and similar technologies.
Enseignement Supérieur (ABES)

STRENGTHS AND LIMITATIONS OF THIS STUDY:

- This is a mixed-methods feasibility study to determine whether an RCT of intervention versus expectant management of sFGR in a monochorionic twin pregnancy is possible.
- This mixed-methods approach will be particularly useful in providing deeper understanding of the above research question with enhanced validity and will enable researchers to explore various dimensions which influence decision-making.
- The study has three work packages: WP1 (A prospective UK multicentre study), WP2 (A qualitative study to explore parents' and clinicians' perspectives) and WP3 (A consensus development meeting to determine the feasibility of a Trial) and will be a rigorous multifaceted investigation.
- The primary research question which the FERN study seeks to address is to ascertain whether an RCT of intervention versus expectant management of sFGR in monochorionic twin pregnancy is feasible by exploring women's preference, clinician's preference, current practice and equipoise and numbers of cases, which has never been investigated before.

INTRODUCTION

Twin pregnancy is associated with an increased risk of adverse fetal and neonatal outcomes, such as stillbirth and neonatal death compared to singletons.¹ Twin pregnancies are also at 4-fold increased risk of neurological sequelae such as cerebral palsy compared to singletons.² Monochorionic (MC) twin pregnancies, where both fetuses originate from the same conception and share one placenta, represent 25-30% of all twin pregnancies.³ MC twin pregnancies pose unique difficulties for management because of complications from a shared placenta and communication between the fetal circulations. These can lead to the two common pathologies seen in MC twin pregnancies: twin to twin transfusion syndrome (TTTS) and selective fetal growth restriction (sFGR). sFGR, when one fetus grows normally whilst the other is growth restricted, affects approximately 10-15% of monochorionic twin pregnancies. Definitions of sFGR in monochorionic twin pregnancy vary, but current UK guidelines define sFGR as an inter-twin estimated fetal weight (EFW) discordance of >20% after 20 weeks.³ The ISUOG guideline supports using the smaller twin being <10th centile and an inter-twin discordance of $\geq 25\%$.⁵ Early onset sFGR, occurring prior to 24 weeks' gestation, is less common but is associated with greater risk to the fetus and poses substantial management difficulties due to the distance from viability. sFGR in monochorionic twin pregnancy is conventionally classified into 3 subtypes based on the umbilical artery (UA) Doppler (Figure 1) according to Gratacos et al (2007): Type I (positive end-diastolic flow (EDF) in the UA) has the best outcome, Type II (persistent absent / reversed EDF) the worst prognosis, Type III (intermittently absent / reversed EDF) has an unpredictable course.⁶

There are three main management options for sFGR:

(1) Expectant management: close monitoring until the decision for timed birth is made. This carries a risk of intra-uterine demise (IUD) of the smaller twin, which may result in co-twin demise (40%) or neurological sequelae (30%), thought to be secondary to hypotension in the larger twin due to intertwin transfusion via placental vascular connections.³ (2) Selective termination by bipolar cord coagulation (BCC) or radiofrequency ablation (RFA). This may protect the larger baby from harm if the smaller twin were to subsequently die. However, termination may not be acceptable to some parents; and (3) Placental laser photocoagulation of connecting vessels to protect the larger twin in the event of death of the smaller twin. This is often technically challenging and may worsen the outcomes of the smaller twin.⁷⁻¹⁰

We conducted a preliminary survey of 29 UK fetal medicine clinicians to establish their current practice for the management of sFGR in monochorionic twin pregnancies.¹¹ Our survey revealed significant variation in diagnostic criteria, management and surveillance protocols for the three different types of early onset sFGR in MCDA twin.¹¹ Great uncertainty also remains over what interventions, if any, women would be willing to accept at different gestations. The current paucity of qualitative data and patient experience information may hamper a subsequent clinical trial.¹¹ The loss of a fetus is associated with long-term psychological effects for the parents.¹² Furthermore, the lifelong cost of prematurity-associated neurodisability, such as cerebral palsy, may be substantial.¹³⁻¹⁷

Therefore, there is a lack of consensus on the optimal management (expectant or intervention) of sFGR in monochorionic twin pregnancies and the most appropriate timing of delivery. Each management option carries risks and benefits in terms of the key outcomes of stillbirth and cerebral palsy; what is currently unknown is the relative risk-benefit ratio for each option.

No randomised controlled trials (RCT) or Cochrane reviews have investigated sFGR. Until recently, published systematic reviews^{8,10} assessed mortality and morbidity, especially cerebral injury¹⁷, but did not compare outcomes based on management. We have published a meta-analysis of the perinatal mortality and morbidity in sFGR according to management⁷ which demonstrated significant bias in the published literature. Studies were retrospective and non-randomised, with significant heterogeneity in included populations, management, and outcomes.⁷ This meta-analysis was therefore unable to explore the association between gestational age at delivery and neonatal outcomes. This is fundamental as gestational age at delivery is the main determinant of perinatal outcome in twins.^{16,17} Primary research has not identified a significant difference between RFA and BCC for selective fetal reduction for sFGR in monochorionic twin pregnancy.^{18,19} In summary, to quote the Royal College of Obstetricians and Gynaecologists (RCOG)³, ‘Due to a lack of available high-quality evidence, there is no clear guidance on how to manage sFGR in such pregnancies.’

The primary objective is to recommend whether an RCT of intervention versus expectant management of sFGR in monochorionic twin pregnancy is feasible by exploring women’s preference, clinician’s preference, current practice and equipoise and numbers of cases.

METHODS AND ANALYSIS

STUDY DESIGN:

FERN is a mixed-methods feasibility study with three distinct Work Packages (WPs) to determine the overall research objectives (Figure 2).

Work Package 1 - A Prospective UK Multicentre Study

We will conduct a prospective UK multicentre study to determine the incidence, natural history, and outcomes of MCDA twin pregnancies complicated by sFGR according to whether they had expectant management or fetal intervention.

The data will provide the following key outcomes:

- 1) Proportion of women who opt for expectant management, active fetal intervention or termination of the entire pregnancy. We will have reasonable precision of these estimates from current routine practice, which are critical for any future research including an RCT;
- 2) We will learn about management of these pregnancies, i.e. frequency of monitoring, timing of delivery, thresholds for intervention, etc; and
- 3) Incidence of adverse outcomes. However, some subgroups may be small so the precision of some estimates might be inaccurate, with wide 95% confidence intervals. We will use the data from the UK twin registry to ascertain the accuracy of these estimates.

Eligibility criteria- Women with a MCDA twin pregnancy and a diagnosis of sFGR (estimated fetal weight (EFW) of one twin $<10^{\text{th}}$ centile + EFW discordance $\geq 25\%$) and gestational age at diagnosis between 16^{+0} - 23^{+6} weeks based on ultrasound and who can provide informed consent will be considered eligible for WP1. The exclusion criteria include higher order multiple pregnancies, maternal age under 18 years, other monochorionic complications (such as TTTS or twin anaemia polycythaemia sequence before enrolment), other rare complicated monochorionic twin pregnancies at enrolment (such as twin reversed arterial perfusion syndrome (TRAP), known karyotype abnormality, known major fetal structural abnormality defined as a lethal, incurable or curable severe abnormality with a high risk of residual disability), an

indication for immediate delivery, pre-term pre-labour rupture of membranes before enrolment. In addition, women who lack the capacity to give informed consent, or suffer from any medical or psychiatric condition which compromises their ability to participate will also be excluded.

Recruitment and sampling - We will approach all women with sFGR as defined by the eligibility criteria. There will be an 18-month data collection period (14 months active recruitment plus 4 months for completion of pregnancy outcomes) from 15 UK sites. Our recent survey suggests that we should be able to recruit two women per month per centre; if we assume a conservative 40% recruitment rate, our pragmatic estimate is that we will recruit over 120 women in the study period. All participants will be recruited from their local fetal medicine or antenatal clinic. They will be contacted in person by a member of the clinical research team (Principal Investigator (PI) /Research Midwife/Delegated Authority) and invited to take part in the study. Potential participants will be given written and verbal information on the FERN study and provided with the opportunity to ask questions and take any additional time required to consider taking part in the study. Following this, participants will be asked to sign the study-specific informed consent form (ICF) in the presence of the site researcher. Once eligibility has been confirmed by the PI at the site, and informed consent has been obtained, the participant will be registered and then entered into the study using a bespoke electronic data capture system that will generate a unique participant identification number.

Sample size calculation- No formal power calculation or primary outcome data will be determined for any WP in this study as this is a feasibility study and does not involve any formal hypothesis testing. We will assess the feasibility of recruiting women with

1
2
3 a monochorionic twin pregnancy complicated by sFGR to collect detailed information
4 about pregnancy management and outcome. The success of this WP will be
5 determined by the acceptability of the study by women and clinicians. This will be
6 determined as the ability to recruit and retain participants. We would expect to recruit
7 in the region of 120 participants across the UK over a 14-month period, but we will
8 continue to recruit until the recruitment period is complete. This is a pragmatic number
9 which is based on the typical number of sFGR patients seen per annum in large
10 consultant led NHS units within the UK.
11
12
13
14
15
16
17
18
19
20
21
22
23

24 **Outcome measures** - This study will assess the feasibility of collecting outcome data
25 from women with a MCDA twin pregnancy complicated by sFGR.
26
27
28
29
30
31
32

33 **Work Package 2 – Exploring Patients’ and Clinicians’ Views**

34 This will involve qualitative research, including interviews and focus groups (if there is
35 divergence of opinion about trial acceptability) with women and their partners (if
36 applicable), as well as with clinicians involved in the management of monochorionic
37 twin pregnancies. Qualitative methods will explore parents’ and clinicians’
38 perspectives on:
39
40
41
42
43
44
45

- 46 1) Future trial design including views on active intervention and expectant
47 management, randomisation, outcomes, and approach to recruitment and consent,
48 including decision making and length and content of trial information materials;
49
50
51
52
53
- 54 2) Factors influencing parent and clinician decision-making when potential outcomes
55 include death or serious disability of one or both twins; and
56
57
58
59
60

3) Acceptability of a future trial, including potential barriers to recruitment, consent decisions, trial procedures, equipoise; inclusion / exclusion criteria and training needs.

Eligibility Criteria - Mothers and partners (if applicable) of MCDA twin pregnancies complicated by sFGR in the previous three years; and clinical staff involved in the management of monochorionic twin pregnancies.

Recruitment and sampling - Women and their partners (if applicable) will be recruited through two routes to maximise the potential participation within the recruitment period and ensure that women from all management groups are represented. Firstly, all women and partners (if applicable) approached to take part in WP1 will be invited to consent to be contacted by a member of the WP2 research team to discuss taking part in this aspect of the study, regardless of ultimate participation in WP1. Secondly, the qualitative research team will contact stakeholders (e.g. charity leads / Chief Executive Officers) of twin support groups (e.g. Twins Trust - formerly Twins and Multiple Births Association; TAMBA) inviting them to post a FERN study media advert on the support group's website and / or social media pages (e.g. Facebook and Twitter) or member email lists. If divergence in opinions on trial intervention and acceptable outcomes is observed in the early analysis of interviews, we will use social media (route 2) to recruit parents to a focus group (~6 to 10 parents) in the Northwest of England (pragmatic choice as location of the Qualitative study team) with the aim of reaching consensus about an acceptable trial design. A Focus Group Topic Guide will be developed based on interview findings.

For clinician recruitment, a comprehensive database of clinicians, nationally and internationally, who lead the management of sFGR will be developed by the CI, co-

Protected by copyright, including for uses related to text and data mining, AI training, and similar technologies.
Enseignement Supérieur (ABES)

applicant team and collaborators. This database will be used to identify which clinicians will be invited to take part in this aspect of the study. Secondly, a FERN Practitioner Online Recruitment advert will be posted on relevant social media pages. As with the women and partner interviews, if divergence in opinions is observed in the early analysis of interviews, clinicians will be recruited to a focus group (~8-10 site healthcare professionals) with the aim of reaching consensus about an acceptable trial design. A Focus Group Topic Guide will be developed based on interview findings.

Sample size calculation- To ensure sample variance we will include parents with experience of intervention and expectant management of sFGR, bereaved and non-bereaved parents, and clinicians in favour of both fetal intervention and expectant management. Interviews will be conducted till we achieve information power,²⁰ which is the point at which data addresses the study aims; sample variance (e.g., parents offered expectant management or intervention, bereaved and non-bereaved parents, and clinicians in favour of intervention or expectant management) and, use of theory (e.g. Bioethical principles) and quality of dialogue.

Primary outcome measures- Qualitative element of the study will explore parents' and clinicians' perspectives and present a summary of findings and recommendations about trial design/feasibility to feed into WP3.

Work Package 3 - Consensus Development to Determine Feasibility of a Trial

We will utilise information provided in WP1 and WP2 to develop a consensus on a future definitive study. The effect of a design of a future RCT, if deemed acceptable and feasible, on management of sFGR in monochorionic twin pregnancy will be assessed: power calculation, economic feasibility, identifying the research cohort (involving subtypes, gestation, intervention, and control arms) and key outcomes.

A survey of clinicians will be performed as part of WP3 to identify current practices and opinion. Clinicians from the curated database of experts will be invited to participate in the survey. The results of this survey will be used to inform the selected consensus process approach that will ultimately formulate optimal trial design for use in a planned clinical trial in women with monochorionic twin pregnancies complicated by sFGR. Depending on the results and findings of the previous work packages, we will take an adaptive approach when it comes to reaching consensus on determining whether a future trial is possible (for example, this could take the form of Delphi survey or a structured consensus meeting). Important issues and trial design constructs raised from these previous work streams will be formulated into a series of structured items for consideration. We will aim for at least 50% or more voting on the feasibility and acceptability of the study design/eligibility to take things forward as 'plausible'. Plausibility will be defined as items where at least 50% of the voting participants deem the item as feasible and acceptable. An iterative process will be followed to allow further discussion on items when needed. The consensus opinion of relevant stakeholders on key preferred scenarios will be used to develop a protocol for this planned trial. The feasibility of this protocol will then be further consolidated using qualitative research and a final consensus process. If it becomes apparent that an RCT would not be feasible/acceptable, future research design would be agreed upon by a structured consensus meeting.

STATISTICAL / DATA ANALYSIS CONSIDERATIONS

Patients will be analysed on an intention to treat (ITT) basis at the time of recruitment, retaining all patients irrespective of any protocol deviations. Further secondary analysis will be carried out on a per protocol population. Further analyses may be

Protected by copyright, including for uses related to text and data mining, AI training, and similar technologies. Enseignement Supérieur (ABES).

carried out on planned subgroups (e.g., those who meet the inclusion criteria for a future study) as required. As this is an exploratory study no formal levels of significance are set. All statistics will be presented alongside 95% confidence intervals to give an indication of the level of precision. The likelihood of missing data is small given the standard procedure in place to manage the study centrally. Final analyses will take place on a complete-case basis with no adjustments made (e.g., multiple imputation) in the case of missing data. Analysis of study data will take place once all participants have received the planned follow-up and all data are available for analysis. Continuous data will be summarised as median, inter-quartile range (IQR) and ranges. Categorical data shall be summarised as frequencies of counts and associated percentages. Multivariate data analysis techniques will be used to attempt to find natural groupings in the generated data. In particular hierarchical cluster analysis (HCA) and principle component analysis (PCA) techniques will be used.

Thematic analysis of qualitative data from the WP2 interviews and focus group(s) will be assisted using NVivo 12 qualitative data analysis package and SPSS software for statistical analysis. Whilst data will be analysed thematically the focus will be modified to fit with the criterion of catalytic validity, whereby findings should be relevant to future research and practice (in particular, the design of the potential definitive RCT). Analysis will also draw upon philosophical theory, concepts, and methods (such as conceptual clarification and balanced argumentation) in an aim to develop recommendations that are defensible and consistent with Key principles of biomedical ethics. This empirical ethics approach will facilitate the identification of practices or processes that should be challenged or modified in trial design. Quantitative analysis will involve simple descriptive statistics and the chi-square test for trend. Data from each method will be analysed separately then synthesized using constant comparative

analysis. If it becomes apparent that a RCT would not be feasible/acceptable, future research design would be agreed upon by a structured consensus meeting.

Ethics and dissemination

This study has received ethical approval from the Health Research Authority (HRA) Ethics Committee South West – Cornwall and Plymouth (REC reference 20/SW/0156, IRAS ID 286337), but all participating sites must undergo site specific assessment of capacity and capability via the HRA. Any adverse events or protocol deviation will be identified and reported. The study will be conducted in accordance with, but not limited to, the Human Rights Act 1998, the Data Protection Act 2018, Freedom of Information Act 2000 subject to the provisions of sections 41 and 43 thereof, the EU (European Union) Clinical Trials Directive, ICH-GCP, the Declaration of Helsinki 1996 and the UK Policy framework for Health and Social Care research as amended from time to time. All data will be recorded, collected, stored and processed, in accordance with GDPR (EU) 2016/679.

REFERENCES:

1. Draper ES, Gallimore ID, Kurinczuk JJ, Kenyon S; the MBRRACE-UK Collaboration. MBRRACE-UK Perinatal Confidential Enquiry: Stillbirths and neonatal deaths in twin pregnancies. The Infant Mortality and Morbidity Studies, Department of Health Sciences, University of Leicester: Leicester, 2020.

2. Scher AI, Petterson B, Blair E, Ellenberg JH, Grether JK, Haan E, et al. The Risk of Mortality or Cerebral Palsy in Twins: A Collaborative Population-Based Study. *Pediatr Res*. 2002 Nov;52(5):671–81.

Protected by copyright, including for uses related to text and data mining, AI training, and similar technologies. Enseignement Supérieur (ABES).

3. Royal College of Obstetricians and Gynaecologists. Green-top Guideline No. 51. Management of Monochorionic Twin Pregnancy. November 2016.
4. Khalil A, Beune I, Hecher K, Wynia K, Ganzevoort W, Reed K, Lewi L, Oepkes D, Gratacos E, Thilaganathan B, Gordijn SJ. Consensus definition and essential reporting parameters of selective fetal growth restriction in twin pregnancy: a Delphi procedure. *Ultrasound Obstet Gynecol* 2019;53:47-54.
5. Khalil A, Rodgers M, Baschat A, Bhide A, Gratacos E, Hecher K, et al. ISUOG Practice Guidelines: role of ultrasound in twin pregnancy: ISUOG Guidelines. *Ultrasound Obstet Gynecol*. 2016 Feb;47(2):247–63.
6. Gratacós E, Lewi L, Muñoz B, Acosta-Rojas R, Hernandez-Andrade E, Martinez JM, et al. A classification system for selective intrauterine growth restriction in monochorionic pregnancies according to umbilical artery Doppler flow in the smaller twin. *Ultrasound Obstet Gynecol*. 2007 Jul;30(1):28–34.
7. Townsend R, D'Antonio F, Sileo FG, Kumbay H, Thilaganathan B, Khalil A. Perinatal outcome of monochorionic twin pregnancies complicated by selective fetal growth restriction according to management: a systematic review and meta-analysis. *Ultrasound Obstet Gynecol* 2019;53:36-46.
8. Buca D, Pagani G, Rizzo G, et al. Outcome in monochorionic twin pregnancies with selective intrauterine growth restriction according to the umbilical artery Doppler pattern of the smaller twin: a systematic review and meta-analysis. *Ultrasound in Obstet and Gynecol* 2017;50:559-68.
9. Townsend R, Khalil A. Twin pregnancy complicated by selective growth restriction. *Curr Opin Obstet Gynecol* 2016;28:485-91.

10. Monaghan C, Kalafat E, Binder J, Thilaganathan B, Khalil A. Prediction of adverse pregnancy outcome in monochorionic- diamniotic twin pregnancies complicated by selective fetal growth restriction. *Ultrasound Obstet Gynecol* 2019;53:200-207.

11. Khalil A, Thilaganathan B. Selective fetal growth restriction in a monochorionic twin pregnancy: a Dilemma for clinicians and a challenge for researchers. *Ultrasound Obstet Gynecol* 2019;53:23-25.

12. Heazell AE, Siassakos D, Blencowe H, Burden C, Bhutta ZA, Cacciatore J, et al. Stillbirths: economic and psychosocial consequences. *Lancet* 2016;387:604-16.

13. Ishii K, Nakata M, Wada S, et al. Feasibility and preliminary outcomes of fetoscopic laser photocoagulation for monochorionic twin gestation with selective intrauterine growth restriction accompanied by severe oligohydramnios. *The Journal of Obstetrics and Gynaecology Research* 2015;41:1732-7.

14. Chalouhi GE, Marangoni MA, Quibel T, et al. Active management of selective intrauterine growth restriction with abnormal Doppler in monochorionic diamniotic twin pregnancies diagnosed in the second trimester of pregnancy. *Prenatal Diagnosis* 2013;33:109-15.

15. Inklaar MJ, van Klink JM, Stolk TT, et al. Cerebral injury in monochorionic twins with selective intrauterine growth restriction: a systematic review. *Prenatal Diagnosis* 2014;34:205-13.

16. Morsing E, Asard M, Ley D, Stjernqvist K, Marsal K. Cognitive function after intrauterine growth restriction and very preterm birth. *Pediatrics* 2011;127:e874–82

17. Marlow N, Wolke D, Bracewell MA, Samara M. Neurologic and developmental disability at six years of age after extremely preterm birth. *N Engl J Med* 2005;352:9–19.

Protected by copyright, including for uses related to text and data mining, AI training, and similar technologies. Ensignement Supérieur (ABES).

18. Parra-Cordero M, Bennasar M, Martínez JM, Eixarch E, Torres X, Gratacos E. Cord occlusion in monochorionic twins with early selective intrauterine growth restriction and abnormal umbilical artery Doppler: a consecutive series of 90 cases. *Fetal Diagn Ther* 2016; 39: 186–191.
19. Peng R, Xie H-N, Lin M-F, Yang J-B, Zhou Y, Chen H-Q, Zhu Y. Clinical outcomes after selective fetal reduction of complicated monochorionic twins with radiofrequency ablation and bipolar cord coagulation. *Gynecol Obstet Invest* 2016; 81: 552–558.
20. Malterud K, Siersma VD, Guassora AD. Sample Size in Qualitative Interview Studies: Guided by Information Power. *Qual Health Res*. 2016 Nov;26(13):1753–60.

AUTHORS CONTRIBUTIONS:

AK conceptualized the project and is the chief investigator of the FERN project, obtained the grant for the study, drafted the protocol, revised it for intellectual content, approved the final version and is the corresponding author. SP drafted the first version of the paper and revised it and is a member of the study management team. OY revised the paper for intellectual content. TR is the FERN project study coordinator and revised the paper for intellectual content. AH, BT, BV, CC, JK, JS, KW, LH, MT, RA, RJ, ST, ZA and AS are the co-applicants for the study grant and revised the paper for intellectual content. JK is also the study statistician. JM (Mendoza), JM (Marsden), MW, NF, SL are the PPIE co-applicants for the study grant and reviewed the protocol. DH, RP, EJ, LI, MP, TKM, AAB, JD, LL, KH, EL, DP, AP, CB, DA, GA, MD, SN, TM,

1
2
3
4
5
6
7
8
9
10
11
12
13
14
15
16
17
18
19
20
21
22
23
24
25
26
27
28
29
30
31
32
33
34
35
36
37
38
39
40
41
42
43
44
45
46
47
48
49
50
51
52
53
54
55
56
57
58
59
60

FDC, YY are the collaborators for the study grant and revised the paper for intellectual content. All co-authors accept responsibility for the decision to submit for publication. The corresponding author attests that all listed authors meet authorship criteria and that no others meeting the criteria have been omitted.

FUNDING STATEMENT: This work is funded by National Institute for Health and Care Research (NIHR) via grant number NIHR128596.

COMPETING INTERESTS STATEMENT: None

FIGURES:

- Figure 1:** Classification of selective fetal growth restriction according to umbilical artery flow patterns
- Figure 2:** FERN study flowchart

Protected by copyright, including for uses related to text and data mining, AI training, and similar technologies.
Enseignement Supérieur (ABES)

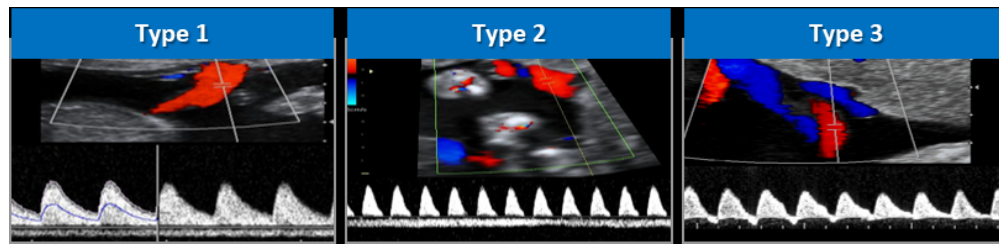


Figure 1: Classification of selective fetal growth restriction according to umbilical artery flow patterns

137x32mm (150 x 150 DPI)

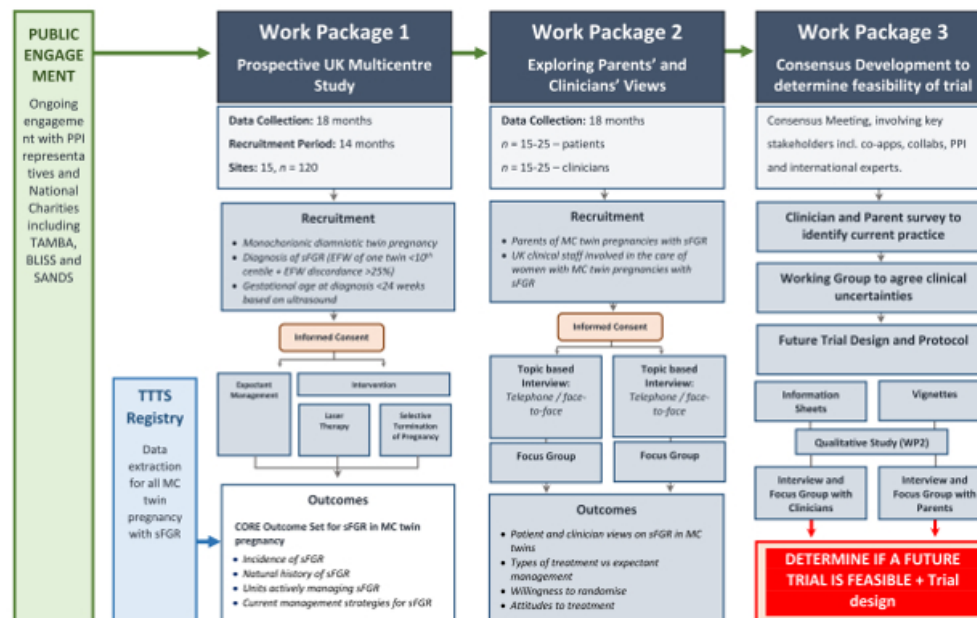


Figure 2: FERN study flowchart

293x190mm (54 x 54 DPI)

BMJ Open

FERN: Is it possible to conduct a Randomised controlled trial of Intervention or Expectant Management for Early Onset Selective Fetal Growth Restriction in Monochorionic Twin Pregnancy: protocol for a prospective, mixed methods feasibility study

Journal:	<i>BMJ Open</i>
Manuscript ID	bmjopen-2023-080021.R1
Article Type:	Protocol
Date Submitted by the Author:	03-Apr-2024
Complete List of Authors:	<p>Khalil, Asma; University of London, St. George's Medical School PRASAD, SMRITI; Indraprastha Apollo Hospital, Fetal Medicine and Genetics Woolfall, Kerry; University of Liverpool, Institute of Population, Health and Society Mitchell, Tracy; University of Liverpool, Public Health, Policy and Systems Kirkham, Jamie J.; Manchester University, Biostatistics Yaghi, Odai; St George's University Hospital Ricketts, Tracey; University of Liverpool, Department of Women's and Children's Health Attilakos, George; University College London Hospitals NHS Foundation Trust Bailie, Carolyn; Royal Jubilee Maternity Hospital Cornforth, Christine; University of Liverpool, Department of Women's and Children's Health Denbow, Mark; University Hospitals Bristol NHS Foundation Trust Hardman, Louise; Liverpool Women's NHS Foundation Trust Harrold, Jane; University of Liverpool, Department of Women's and Children's Health Parasuraman, Rajeswari; Princess Anne Hospital Leven, Shauna; The Manor House Marsden, Joel; NA Mendoza, Jessica; NA Mousa, Tommy; University of Leicester Nanda, Surabhi; Guy's and St Thomas's Hospital Thilaganathan, Baskaran; St George's University Hospitals NHS Foundation Trust, Department of Obstetrics and Gynaecology Turner, Mark; University of Liverpool, Department of Women's and Children's Health Watson, Michelle; NA Wilding, Karen; University of Liverpool, Clinical Directorate, Faculty of Health and Life Sciences Popa, Mariana; University of Liverpool, Institute of Life and Human Sciences Alfirevic, Zarko; University of Liverpool, Department of Women's and Children's Health Anumba, Dilly; University of Sheffield</p>

	Ashcroft, Richard; City University of London, School of Law Baschet, Ahmet; JHM da Silva Costa, Fabrício ; Griffith University Deprest, Jan; University Hospital Leuven, Gynaecology Fenwick, Natasha; Twins Trust, Research and Resources Officer Haak, Monique; Leiden University Medical Center, Obstetrics and Gynaecology Healey, Andy; King's College London, IOPPN Hecher, Kurt; University Medical Center Hamburg-Eppendorf, Department of Obstetrics and Fetal Medicine Impey, Lawrence; Oxford University Hospitals NHS Trust, Department of Fetal Medicine Jackson, Richard; University of Liverpool, Liverpool Clinical Trials Centre Johnstone, Edward; The University of Manchester, Maternal & Fetal Health Research Centre; St Mary's Hospital, Obstetrics Lewi, Liesbeth; University Hospitals Leuven, Fetal Medicine Unit Lopriore, Enrico; Leiden University Medical Center, Pediatrics Papageorgiou, Aris; University of Oxford, Nuffield Department of Women's & Reproductive Health; University of Oxford, Oxford Maternal & Perinatal Health Institute, Green Templeton College, Pasupathy, Dharmintra; King's College London, Women's Health Academic Centre Sandall, Jane; Kings College, London, Health and Social Care Research Division Sharp, Andrew; University of Liverpool Thangaratinam, Shakila; Queen Mary University of London, BARC (Barts Research Centre for Women's Health), Blizard Institute, Barts and the London School of Medicine and Dentistry; University of Birmingham, Institute of Metabolism and Systems Research Vollmer, B; University of Southampton Yinon, Yoav; Tel Aviv University
Primary Subject Heading:	Obstetrics and gynaecology
Secondary Subject Heading:	Obstetrics and gynaecology, Qualitative research
Keywords:	SURGERY, Mortality, Clinical Trial, Fetal medicine < OBSTETRICS, OBSTETRICS

SCHOLARONE™
Manuscripts

TITLE

FERN: Is it possible to conduct a Randomised controlled trial of Intervention or Expectant Management for Early Onset Selective Fetal Growth Restriction in Monochorionic Twin Pregnancy: protocol for a prospective mixed methods feasibility study

Asma Khalil^{1,2,3}, Smriti Prasad¹, Kerry Woolfall⁴, Tracy Karen Mitchell⁴, Jamie Kirkham⁵, Odai Yaghi¹, Tracey Ricketts⁶, Mariana Popa⁴, Zarko Alfirevic⁶, Dilly Anumba⁷, Richard Ashcroft⁸, George Attilakos⁹, Carolyn Bailie¹⁰, Ahmet A Baschat¹¹, Christine Cornforth⁶, Fabricio Da Silva Costa¹², Mark Denbow¹³, Jan Deprest¹⁴, Natasha Fenwick¹⁵, Monique C Haak¹⁶, Louise Hardman¹⁷, Jane Harrold⁶, Andy Healey¹⁸, Kurt Hecher¹⁹, Rajeswari Parasuraman²⁰, Lawrence Impey²¹, Richard Jackson²², Edward Johnstone²³, Shauna Leven¹⁵, Liesbeth Lewi¹⁴, Enrico Lopriore²⁴, Joel Marsden²⁵, Jessica Mendoza²⁵, Tommy Mousa²⁶, Surabhi Nanda²⁷, Aris Papageorgiou²⁸, Dharmintra Pasupathy²⁹, Jane Sandall³⁰, Andrew Sharp⁶, Shakila Thangaratinam^{31,32,33}, Baskaran Thilaganathan³⁴, Mark Turner⁶, Brigitte Vollmer³⁵, Michelle Watson²⁵, Karen Wilding³⁶, Yoav Yinon³⁷ for FERN study team

¹Fetal Medicine Unit, St George's University Hospital, London, UK

²Vascular Biology Research Centre, Molecular and Clinical Sciences Research Institute, St George's University of London, London, UK

³Fetal Medicine Unit, Liverpool Women's Hospital, University of Liverpool, Liverpool, UK

⁴Institute of Population Health, Department of Public Health, Policy and Systems, University of Liverpool

⁵Centre for Biostatistics, The University of Manchester, Manchester Academic Health Science Centre, Manchester, United Kingdom

⁶Harris Wellbeing of Women Research Centre, Department of Women's and Children's Health, Faculty of Health & Life Sciences, University of Liverpool

⁷Academic Unit of Reproductive and Developmental Medicine, Department of Human Metabolism, University of Sheffield, Level 4, Jessop Wing, Tree Root Walk, Sheffield S10 2SF, UK.

⁸Executive Dean and Professor, City Law School, University of London

⁹ Women's Health Division, University College London Hospitals NHS Foundation Trust, London, UK; Institute for Women's Health, University College London, London, UK.

¹⁰ Fetal Medicine, Royal Jubilee Maternity Hospital, Grosvenor Road, Belfast, BT12 6BB, UK.

¹¹ Johns Hopkins Center for Fetal Therapy Department of Gynecology & Obstetrics Johns Hopkins University Baltimore, MD, 21287, USA

¹² Maternal Fetal Medicine Unit, Gold Coast University Hospital, Gold Coast, QLD, Australia

¹³ Fetal Medicine Unit, St Michael's Hospital, University Hospitals Bristol NHS Foundation Trust, Bristol, United Kingdom.

¹⁴ Fetal Medicine Unit, Dept. Obstetrics and Gynecology, University Hospitals Leuven, Herestraat 49, 3000 Leuven, Belgium; Dept of Development and Regeneration, Biomedical Sciences, KU Leuven, Leuven, Belgium.

¹⁵ Twins Trust, The Manor House, Aldershot GU12 4JU, UK

¹⁶ Department of Obstetrics, Fetal Medicine Unit, Leiden University Medical Center, Leiden, The Netherlands.

¹⁷ Liverpool Women's NHS Foundation Trust, Crown Street, Liverpool, L8 7SS, UK

¹⁸ King's Health Economics, Health Service, and Population Research Department, King's College London, London United Kingdom

¹⁹ University Medical Center Hamburg-Eppendorf, Department of Obstetrics and Fetal Medicine, Hamburg, Germany

²⁰ Wessex Fetal Maternal Medicine unit, University Southampton NHS Foundation Trust, Princess Anne Hospital, Southampton, UK

²¹ Department of Fetal Medicine, John Radcliffe Hospital, Oxford University Hospitals NHS Foundation Trust, Oxford OX3 9DU, UK

²² Department of Statistics, Liverpool Clinical Trials Unit, University of Liverpool, United Kingdom

²³ Maternal and Fetal Health Research Centre, Division of Developmental Biology and Medicine, School of Medical Sciences, Faculty of Medicine Biology and Health, University of Manchester, Manchester M13 0WL, UK

²⁴ Department of Paediatrics, Division of Neonatology, Leiden University Medical Center, Leiden, The Netherlands

²⁵ PPIE co-applicant, FERN project

²⁶ Consultant/Honorary Senior Lecturer in Maternal and Fetal Medicine, University of Leicester, United Kingdom

Protected by copyright, including for uses related to text and data mining, AI training, and similar technologies. Ensignement Supérieur (ABES).

²⁷ Fetal Medicine Unit, Guy's and St Thomas's Hospital, London, UK

²⁸ Nuffield Department of Women's & Reproductive Health, University of Oxford, Oxford, UK.

²⁹ Reproduction and Perinatal Centre, Faculty of Medicine and Health, The University of Sydney, Sydney, New South Wales, Australia

³⁰ Division of Women's Health, King's College, London, Women's Health Academic Centre, King's Health Partners, 10th Floor, North Wing, St. Thomas' Hospital, Westminster Bridge Road, London, UK

³¹ WHO Collaborating Centre for Global Women's Health, Institute of Metabolism and Systems Research, University of Birmingham, Birmingham, UK

³² NIHR Biomedical Research Centre, University Hospitals Birmingham, UK

³³ Birmingham Women's and Children's NHS Foundation Trust, Birmingham, UK

³⁴ Director, Fetal Medicine Unit, Department of Obstetrics and Gynaecology, St George's University Hospitals NHS Foundation Trust, London, United Kingdom

³⁵ Clinical Neurosciences, Faculty of Medicine, University of Southampton, Southampton, UK

³⁶ University of Liverpool, Clinical Directorate, Faculty of Health and Life Sciences, Brownlow Hill, Liverpool, L69 3BX

³⁷ Department of Obstetrics and Gynecology, Chaim Sheba Medical Center, Tel-Hashomer, Ramat-Gan 52621, Israel.

Corresponding author:

Professor Asma Khalil MRCOG MD MSc (Epi) DFRH Dip (GUM)

Fetal Medicine Unit

Department of Obstetrics and Gynaecology

St. George's University Hospitals NHS Foundation Trust

Blackshaw Road

London SW17 0QT

United Kingdom.

Email address: asmakhalil79@googlemail.com; akhalil@sgul.ac.uk

Phone: 020 8725 01924

1
2
3
4
5
6
7
8
9
10
11
12
13
14
15
16
17
18
19
20
21
22
23
24
25
26
27
28
29
30
31
32
33
34
35
36
37
38
39
40
41
42
43
44
45
46
47
48
49
50
51
52
53
54
55
56
57
58
59
60

Keywords: Twin, multiple, pregnancy, monochorionic, selective, fetal growth restriction, stillbirth, intrauterine demise, neonatal, laser, surgery, morbidity, mortality, clinical trial

For peer review only

Enseignement Supérieur (ABES).
Protected by copyright, including for uses related to text and data mining, AI training, and similar technologies.

ABSTRACT

INTRODUCTION:

Selective Fetal Growth Restriction (sFGR) in monochorionic twin pregnancy, defined as an estimated fetal weight (EFW) of one twin <10th centile and EFW discordance $\geq 25\%$, is associated with stillbirth and neurodisability for both twins. The condition poses unique management difficulties: on the one hand, continuation of the pregnancy carries a risk of death of the smaller twin, with a high risk of co-twin demise (40%) or co-twin neurological sequelae (30%). On the other, early delivery to prevent death of the smaller twin may expose the larger twin to prematurity, with the associated risks of long-term physical, emotional, and financial cost from neurodisability, such as cerebral palsy.

When there is severe and early sFGR, before viability, delivery is not an option. In this scenario there are currently three main management options: (1) Expectant management (2) Selective termination of the smaller twin (3) Placental laser photocoagulation of interconnecting vessels. These management options have never been investigated in a randomised controlled trial (RCT). The best management option is unknown, and there are many challenges for a potential RCT. These include the rarity of the condition resulting in a small number of eligible pregnancies, uncertainty whether pregnant women will agree to participate in such a trial and whether they will agree to be randomised to expectant management or active fetal intervention, and the challenges of a robust and long-term outcome measures. Therefore, the main objective of the FERN study is to assess the feasibility of conducting an RCT of active intervention versus expectant management in monochorionic twin pregnancies with early onset (prior to 24 weeks) sFGR.

METHODS AND ANALYSIS: The FERN study is a prospective mixed-methods feasibility study. The primary objective is to recommend whether an RCT of intervention versus expectant management of sFGR in monochorionic twin pregnancy is feasible by exploring women’s preference, clinician’s preference, current practice and equipoise and numbers of cases. To achieve this, we propose three distinct Work Packages (WPs). WP1: A Prospective UK Multicentre Study, WP2A: a Qualitative Study Exploring Parents’ and Clinicians’ Views and WP3: a Consensus Development to Determine Feasibility of a Trial. Eligible pregnancies will be recruited to WP1 and WP2, which will run concurrently. The results of these two WPs will be utilized in WP3 to develop consensus on a future definitive study. The duration of the study will be 27 months, comprised of 6 months set-up, 18 months recruitment / data collection, and 3 months data analysis, report writing and recommendations. The pragmatic sample size for WP1 is 120 monochorionic twin pregnancies with selective fetal growth restriction. For WP2, interviews will be conducted until data saturation and sample variance are achieved, i.e. when no new major themes are being discovered. Based on previous similar pilot studies, this is anticipated to be approximately 15-25 interviews in both the parent and clinician groups. Engagement of at least 50 UK clinicians is planned for WP3.

ETHICS AND DISSEMINATION: This study has received ethical approval from the Health Research Authority (HRA) South West - Cornwall and Plymouth Ethics Committee (REC reference 20/SW/0156, IRAS ID 286337). All participating sites will undergo site specific approvals for assessment of capacity and capability by the HRA. The results of this study will be published in peer-reviewed journals and

Protected by copyright, including for uses related to text and data mining, AI training, and similar technologies. Ensignement Supérieur (ABES).

presented at national and international conferences. The results from the FERN project will be used to inform future studies.

TRIAL REGISTRATION: This study is included on the ISRCTN Registry (ISRCTN16879394) and, the NIHR Central Portfolio Management System (CPMS), CRN: Reproductive Health and Childbirth Specialty (UKCRN reference 47201).

STRENGTHS AND LIMITATIONS OF THIS STUDY:

- This is a mixed-methods feasibility study to determine whether an RCT of intervention versus expectant management of sFGR in a monochorionic twin pregnancy is possible.
- This mixed-methods approach will be particularly useful in providing deeper understanding of the above research question with enhanced validity and will enable researchers to explore various dimensions which influence decision-making.
- The study has three work packages: WP1 (A prospective UK multicentre study), WP2 (A qualitative study to explore parents' and clinicians' perspectives) and WP3 (A consensus development meeting to determine the feasibility of a Trial) and will be a rigorous multifaceted investigation.
- The primary research question which the FERN study seeks to address is to ascertain whether an RCT of intervention versus expectant management of sFGR in monochorionic twin pregnancy is feasible by exploring women's preference, clinician's preference, current practice and equipoise and numbers of cases, which has never been investigated before.

- As selective fetal growth restriction in monochorionic pregnancy is a relatively infrequent condition, the study may be underpowered to study some of the perinatal outcomes needed to investigate the natural history of the condition itself. To counter this, there is a plan to include data from the UK based Multiple Pregnancy registry for WP1.

For peer review only

Enseignement Supérieur (ABES).
Protected by copyright, including for uses related to text and data mining, AI training, and similar technologies.

INTRODUCTION

Twin pregnancy is associated with an increased risk of adverse fetal and neonatal outcomes, such as stillbirth and neonatal death compared to singletons.¹ Twin pregnancies are also at 4-fold increased risk of neurological sequelae such as cerebral palsy compared to singletons.² Monochorionic (MC) twin pregnancies, where both fetuses originate from the same conception and share one placenta, represent 25-30% of all twin pregnancies.³ MC twin pregnancies pose unique difficulties for management because of complications from a shared placenta and communication between the fetal circulations. These can lead to the two common pathologies seen in MC twin pregnancies: twin to twin transfusion syndrome (TTTS) and selective fetal growth restriction (sFGR). sFGR, when one fetus grows normally whilst the other is growth restricted, affects approximately 10-15% of monochorionic twin pregnancies. Definitions of sFGR in monochorionic twin pregnancy vary, but current UK guidelines define sFGR as an inter-twin estimated fetal weight (EFW) discordance of >20% after 20 weeks.^{3,4} The ISUOG guideline supports using the smaller twin being <10th centile and an inter-twin discordance of $\geq 25\%$.⁵ Early onset sFGR, occurring prior to 24 weeks' gestation, is less common but is associated with greater risk to the fetus and poses substantial management difficulties due to the distance from viability.⁶ sFGR in monochorionic twin pregnancy is conventionally classified into 3 subtypes based on the umbilical artery (UA) Doppler (Figure 1) according to Gratacos et al (2007): Type I (positive end-diastolic flow (EDF) in the UA) has the best outcome, Type II (persistent absent / reversed EDF) the worst prognosis, Type III (intermittently absent / reversed EDF) has an unpredictable course.⁷

There are three main management options for sFGR:

(1) Expectant management: close monitoring until the decision for timed birth is made. This carries a risk of intra-uterine demise (IUD) of the smaller twin, which may result in co-twin demise (40%) or neurological sequelae (30%), thought to be secondary to hypotension in the larger twin due to intertwin transfusion via placental vascular connections.³ (2) Selective termination by bipolar cord coagulation (BCC) or radiofrequency ablation (RFA). This may protect the larger baby from harm if the smaller twin were to subsequently die. However, termination may not be acceptable to some parents; and (3) Placental laser photocoagulation of connecting vessels to protect the larger twin in the event of death of the smaller twin. This is often technically challenging and may worsen the outcomes of the smaller twin.⁸⁻¹¹ Active intervention options include selective termination through either BCC or RFA, as well as placental laser photocoagulation of connecting vessels

We conducted a preliminary survey of 29 UK fetal medicine clinicians to establish their current practice for the management of sFGR in monochorionic twin pregnancies.¹² Our survey revealed significant variation in diagnostic criteria, management and surveillance protocols for the three different types of early onset sFGR in MCDA twin.¹² Great uncertainty also remains over what interventions, if any, women would be willing to accept at different gestations. The current paucity of qualitative data and patient experience information may hamper a subsequent clinical trial.¹² The loss of a fetus is associated with long-term psychological effects for the parents.¹³ Furthermore, the lifelong cost of prematurity-associated neurodisability, such as cerebral palsy, may be substantial.¹⁴⁻¹⁸

Therefore, there is a lack of consensus on the optimal management (expectant or intervention) of sFGR in monochorionic twin pregnancies and the most appropriate timing of delivery. Each management option carries risks and benefits in terms of the

Protected by copyright, including for uses related to text and data mining, AI training, and similar technologies. Ensignement Supérieur (ABES).

key outcomes of stillbirth and cerebral palsy; what is currently unknown is the relative risk-benefit ratio for each option.

No randomised controlled trials (RCT) or Cochrane reviews have investigated sFGR. Until recently, published systematic reviews^{9,11} assessed mortality and morbidity, especially cerebral injury¹⁸, but did not compare outcomes based on management. We have published a meta-analysis of the perinatal mortality and morbidity in sFGR according to management⁸ which demonstrated significant bias in the published literature. Studies were retrospective and non-randomised, with significant heterogeneity in included populations, management, and outcomes.⁸ This meta-analysis was therefore unable to explore the association between gestational age at delivery and neonatal outcomes. This is fundamental as gestational age at delivery is the main determinant of perinatal outcome in twins.^{17,18} Primary research has not identified a significant difference between RFA and BCC for selective fetal reduction for sFGR in monochorionic twin pregnancy.^{19,20} In summary, to quote the Royal College of Obstetricians and Gynaecologists (RCOG)³, 'Due to a lack of available high-quality evidence, there is no clear guidance on how to manage sFGR in such pregnancies.'

The primary objective is to recommend whether an RCT of intervention versus expectant management of sFGR in monochorionic twin pregnancy is feasible by exploring women's preference, clinician's preference, current practice and equipoise and numbers of cases.

METHODS AND ANALYSIS

STUDY DESIGN:

FERN is a mixed-methods feasibility study with three distinct Work Packages (WPs) to determine the overall research objectives (Figure 2).

- **Work Package 1 - A Prospective UK Multicentre Study**

We will conduct a prospective UK multicentre study to determine the incidence, natural history, and outcomes of MCDA twin pregnancies complicated by sFGR according to whether they had expectant management or fetal intervention.

The data will provide the following key outcomes:

- 1) Proportion of women who opt for expectant management, active fetal intervention or termination of the entire pregnancy. We will have reasonable precision of these estimates from current routine practice, which are critical for any future research including an RCT;
- 2) We will learn about management of these pregnancies, i.e. frequency of monitoring, timing of delivery, thresholds for intervention, etc; and
- 3) Incidence of adverse outcomes. However, some subgroups may be small so the precision of some estimates might be inaccurate, with wide 95% confidence intervals. We will use the data from the UK twin registry to ascertain the accuracy of these estimates.

Eligibility criteria- Women with a MCDA twin pregnancy and a diagnosis of sFGR (estimated fetal weight (EFW) of one twin $<10^{\text{th}}$ centile + EFW discordance $\geq 25\%$) and gestational age at diagnosis between 16^{+0} - 23^{+6} weeks based on ultrasound and who can provide informed consent will be considered eligible for WP1. The exclusion criteria include higher order multiple pregnancies, maternal age under 18 years, other monochorionic complications (such as TTTS or twin anaemia polycythaemia sequence before enrolment), other rare complicated monochorionic twin pregnancies

at enrolment (such as twin reversed arterial perfusion syndrome (TRAP), known karyotype abnormality, known major fetal structural abnormality defined as a lethal, incurable or curable severe abnormality with a high risk of residual disability), an indication for immediate delivery, pre-term pre-labour rupture of membranes before enrolment. In addition, women who lack the capacity to give informed consent, or suffer from any medical or psychiatric condition which compromises their ability to participate will also be excluded.

Recruitment and sampling - We will approach all women with sFGR as defined by the eligibility criteria. There will be an 18-month data collection period (14 months active recruitment plus 4 months for completion of pregnancy outcomes) from 15 UK sites. The planned start and end date for the study is 01/07/2021 and 31/05/2024 respectively. Our recent survey suggests that we should be able to recruit two women per month per centre; if we assume a conservative 40% recruitment rate, our pragmatic estimate is that we will recruit over 120 women in the study period. All participants will be recruited from their local fetal medicine or antenatal clinic. They will be contacted in person by a member of the clinical research team (Principal Investigator (PI) /Research Midwife/Delegated Authority) and invited to take part in the study. Potential participants will be given written and verbal information on the FERN study and provided with the opportunity to ask questions and take any additional time required to consider taking part in the study. Following this, participants will be asked to sign the study-specific informed consent form (ICF) in the presence of the site researcher. Once eligibility has been confirmed by the PI at the site, and informed consent has been obtained, the participant will be registered and then entered into the study using a bespoke electronic data capture system that will generate a unique participant identification number. The data will be collected on a range of data items

described on the FERN REDCap database. The follow-up will continue till date of discharge of baby/babies from the hospital/neonatal unit. This database is designed and maintained by the University of Liverpool, IT Services in collaboration with the Chief Investigator and Research Manager. The eCRF (electronic Case Record Form) is the primary data collection instrument for the study. All data requested on the eCRF must be recorded and all missing data explained. WP1 is a prospective observational study therefore, all data will be collected prospectively by trained members of the Research team at each study site.

Sample size calculation- No formal power calculation or primary outcome data will be determined for any WP in this study as this is a feasibility study and does not involve any formal hypothesis testing. We will assess the feasibility of recruiting women with a monochorionic twin pregnancy complicated by sFGR to collect detailed information about pregnancy management and outcome. The success of this WP will be determined by the acceptability of the study by women and clinicians. This will be determined as the ability to recruit and retain participants. We would expect to recruit in the region of 120 participants across the UK over a 14-month period, but we will continue to recruit until the recruitment period is complete. This is a pragmatic number which is based on the typical number of sFGR patients seen per annum in large consultant led NHS units within the UK.

Patient and public involvement – No patient and public involvement (PPI) was sought during the set up or design of this feasibility study.

Outcome measures - This study will assess the feasibility of collecting outcome data from women with a MCDA twin pregnancy complicated by sFGR.

Protected by copyright, including for uses related to text and data mining, AI training, and similar technologies. Ensignement Supérieur (ABES).

- **Work Package 2 – Exploring Patients’ and Clinicians’ Views**

This will involve qualitative research, including interviews and focus groups (if there is divergence of opinion about trial acceptability) with women and their partners (if applicable), as well as with clinicians involved in the management of monochorionic twin pregnancies. Qualitative methods will explore parents’ and clinicians’ perspectives on:

- 1) Future trial design including views on active intervention and expectant management, randomisation, outcomes, and approach to recruitment and consent, including decision making and length and content of trial information materials;
- 2) Factors influencing parent and clinician decision-making when potential outcomes include death or serious disability of one or both twins; and
- 3) Acceptability of a future trial, including potential barriers to recruitment, consent decisions, trial procedures, equipoise; inclusion / exclusion criteria and training needs.

Eligibility Criteria - Mothers and partners (if applicable) of MCDA twin pregnancies complicated by sFGR in the previous three years; and clinical staff involved in the management of monochorionic twin pregnancies.

Recruitment and sampling - Women and their partners (if applicable) will be recruited through two routes to maximise the potential participation within the recruitment period and ensure that women from all management groups are represented. Firstly, all women and partners (if applicable) approached to take part in WP1 will be invited to consent to be contacted by a member of the WP2 research team

to discuss taking part in this aspect of the study, regardless of ultimate participation in WP1. Secondly, the qualitative research team will contact stakeholders (e.g. charity leads / Chief Executive Officers) of twin support groups (e.g. Twins Trust - formerly Twins and Multiple Births Association; TAMBA) inviting them to post a FERN study media advert on the support group's website and / or social media pages (e.g. Facebook and Twitter) or member email lists. If divergence in opinions on trial intervention and acceptable outcomes is observed in the early analysis of interviews, we will use social media (route 2) to recruit parents to a focus group (~6 to 10 parents) in the Northwest of England (pragmatic choice as location of the Qualitative study team) with the aim of reaching consensus about an acceptable trial design. A Focus Group Topic Guide will be developed based on interview findings.

For clinician recruitment, a comprehensive database of clinicians, nationally and internationally, who lead the management of sFGR will be developed by the CI, co-applicant team and collaborators. This database will be used to identify which clinicians will be invited to take part in this aspect of the study. Secondly, a FERN Practitioner Online Recruitment advert will be posted on relevant social media pages. As with the women and partner interviews, if divergence in opinions is observed in the early analysis of interviews, clinicians will be recruited to a focus group (~8-10 site healthcare professionals) with the aim of reaching consensus about an acceptable trial design. A Focus Group Topic Guide will be developed based on interview findings.

Sample size calculation- To ensure sample variance we will include parents with experience of intervention and expectant management of sFGR, bereaved and non-bereaved parents, and clinicians in favour of both fetal intervention and expectant management. Interviews will be conducted till we achieve information power,²¹ which is the point at which data addresses the study aims; sample variance (e.g., parents

offered expectant management or intervention, bereaved and non-bereaved parents, and clinicians in favour of intervention or expectant management) and, use of theory (e.g. Bioethical principles) and quality of dialogue.

Primary outcome measures- Qualitative element of the study will explore parents' and clinicians' perspectives and present a summary of findings and recommendations about trial design/feasibility to feed into WP3.

- **Work Package 3 - Consensus Development to Determine Feasibility of a Trial**

We will utilise information provided in WP1 and WP2 to develop a consensus on a future definitive study. The effect of a design of a future RCT, if deemed acceptable and feasible, on management of sFGR in monochorionic twin pregnancy will be assessed: power calculation, economic feasibility, identifying the research cohort (involving subtypes, gestation, intervention, and control arms) and key outcomes.

A survey of clinicians will be performed as part of WP3 to identify current practices and opinion. Clinicians from the curated database of experts will be invited to participate in the survey. The results of this survey will be used to inform the selected consensus process approach that will ultimately formulate optimal trial design for use in a planned clinical trial in women with monochorionic twin pregnancies complicated by sFGR. Depending on the results and findings of the previous work packages, we will take an adaptive approach when it comes to reaching consensus on determining whether a future trial is possible (for example, this could take the form of Delphi survey or a structured consensus meeting). Important issues and trial design constructs raised from these previous work streams will be formulated into a series of structured items for consideration. We will aim for at least 50% or more voting on the feasibility

and acceptability of the study design/eligibility to take things forward as ‘plausible’. Plausibility will be defined as items where at least 50% of the voting participants deem the item as feasible and acceptable. An iterative process will be followed to allow further discussion on items when needed. The consensus opinion of relevant stakeholders on key preferred scenarios will be used to develop a protocol for this planned trial. The feasibility of this protocol will then be further consolidated using qualitative research and a final consensus process. If it becomes apparent that an RCT would not be feasible/acceptable, future research design would be agreed upon by a structured consensus meeting.

STATISTICAL / DATA ANALYSIS CONSIDERATIONS

Patients will be analysed on an intention to treat (ITT) basis at the time of recruitment, retaining all patients irrespective of any protocol deviations. Further secondary analysis will be carried out on a per protocol population. Further analyses may be carried out on planned subgroups (e.g., those who meet the inclusion criteria for a future study) as required. As this is an exploratory study no formal levels of significance are set. All statistics will be presented alongside 95% confidence intervals to give an indication of the level of precision. The likelihood of missing data is small given the standard procedure in place to manage the study centrally. Final analyses will take place on a complete-case basis with no adjustments made (e.g., multiple imputation) in the case of missing data. Analysis of study data will take place once all participants have received the planned follow-up and all data are available for analysis. Continuous data will be summarised as median, inter-quartile range (IQR) and ranges. Categorical data shall be summarised as frequencies of counts and associated percentages. Multivariate data analysis techniques will be used to attempt to find natural groupings

in the generated data. In particular hierarchical cluster analysis (HCA) and principle component analysis (PCA) techniques will be used.

Thematic analysis of qualitative data from the WP2 interviews and focus group(s) will be assisted using NVivo 12 qualitative data analysis package and SPSS software for statistical analysis. Whilst data will be analysed thematically the focus will be modified to fit with the criterion of catalytic validity, whereby findings should be relevant to future research and practice (in particular, the design of the potential definitive RCT). Analysis will also draw upon philosophical theory, concepts, and methods (such as conceptual clarification and balanced argumentation) in an aim to develop recommendations that are defensible and consistent with Key principles of biomedical ethics. This empirical ethics approach will facilitate the identification of practices or processes that should be challenged or modified in trial design. Quantitative analysis will involve simple descriptive statistics and the chi-square test for trend. Data from each method will be analysed separately then synthesized using constant comparative analysis. If it becomes apparent that a RCT would not be feasible/acceptable, future research design would be agreed upon by a structured consensus meeting.

Data monitoring:

As there are no formal hypotheses being tested, there are no formal stopping rules (other than safety) or mechanisms defined here to stop the study prior to the planned end of study. The study does have a formal independent oversight committee that will be able to review at regular intervals all accumulating data. The main responsibility of this committee will be to review the recruitment of participants, the collection of all essential data and to assess patient safety. The Study Oversight / Steering Committee will consist of: i) Chief Investigator, ii) Independent clinician (Chair), iii) Research Manager, iv) Study Statistician, v) Another independent clinician; vi) PPIE (Patient

1
2
3
4
5
6
7
8
9
10
11
12
13
14
15
16
17
18
19
20
21
22
23
24
25
26
27
28
29
30
31
32
33
34
35
36
37
38
39
40
41
42
43
44
45
46
47
48
49
50
51
52
53
54
55
56
57
58
59
60

and Public Involvement and Engagement) Co Applicant, vii) Sponsor; and viii) Lead Site Representative. The role of the Oversight / Steering Committee is to provide oversight of the study. In particular, this committee will concentrate on the progress of the study, adherence to the protocol, participant safety and consideration of new information.

Ethics and dissemination

This study has received ethical approval from the Health Research Authority (HRA) Ethics Committee South West – Cornwall and Plymouth (REC reference 20/SW/0156, IRAS ID 286337), but all participating sites must undergo site specific assessment of capacity and capability via the HRA. Any adverse events or protocol deviation will be identified and reported. The study will be conducted in accordance with, but not limited to, the Human Rights Act 1998, the Data Protection Act 2018, Freedom of Information Act 2000 subject to the provisions of sections 41 and 43 thereof, the EU (European Union) Clinical Trials Directive, ICH-GCP, the Declaration of Helsinki 1996 and the UK Policy framework for Health and Social Care research as amended from time to time. All data will be recorded, collected, stored and processed, in accordance with GDPR (EU) 2016/679.

AUTHORS CONTRIBUTIONS:

AK conceptualized the project and is the chief investigator of the FERN project, obtained the grant for the study, drafted the protocol, revised it for intellectual content, approved the final version and is the corresponding author. SP drafted the first version of the paper and revised it and is a member of the study management team. OY

Protected by copyright, including for uses related to text and data mining, AI training, and similar technologies.
Enseignement Supérieur (ABES)

revised the paper for intellectual content. TR is the FERN project study coordinator and revised the paper for intellectual content. AH, BT, BV, CC, JK, JS, KW (Woolfall), KW (Wilding), LH, MT, RA, RJ, ST, ZA and AS are the co-applicants for the study grant and revised the paper for intellectual content. JK is also the study statistician. JM (Mendoza), JM (Marsden), MW, NF, SL are the PPIE co-applicants for the study grant and reviewed the protocol. MH, JH, RP, EJ, LI, MP, TKM, AAB, JD, LL, KH, EL, DP, AP, CB, DA, GA, MD, SN, TM, FDC, YY are the collaborators for the study grant and revised the paper for intellectual content. All co-authors accept responsibility for the decision to submit for publication. The corresponding author attests that all listed authors meet authorship criteria and that no others meeting the criteria have been omitted.

FUNDING STATEMENT: This work is funded by National Institute for Health and Care Research (NIHR) via grant number NIHR128596.

COMPETING INTERESTS STATEMENT: None

REFERENCES:

1. Draper ES, Gallimore ID, Kurinczuk JJ, Kenyon S; the MBRRACE-UK Collaboration. MBRRACE-UK Perinatal Confidential Enquiry: Stillbirths and neonatal deaths in twin pregnancies. The Infant Mortality and Morbidity Studies, Department of Health Sciences, University of Leicester: Leicester, 2020.

2. Scher AI, Petterson B, Blair E, Ellenberg JH, Grether JK, Haan E, et al. The Risk of Mortality or Cerebral Palsy in Twins: A Collaborative Population-Based Study. *Pediatr Res*. 2002 Nov;52(5):671–81.

3. Royal College of Obstetricians and Gynaecologists. Green-top Guideline No. 51. Management of Monochorionic Twin Pregnancy. November 2016.

4. Khalil A, Beune I, Hecher K, Wynia K, Ganzevoort W, Reed K, Lewi L, Oepkes D, Gratacos E, Thilaganathan B, Gordijn SJ. Consensus definition and essential reporting parameters of selective fetal growth restriction in twin pregnancy: a Delphi procedure. *Ultrasound Obstet Gynecol* 2019;53:47-54.

5. Khalil A, Rodgers M, Baschat A, Bhide A, Gratacos E, Hecher K, et al. ISUOG Practice Guidelines: role of ultrasound in twin pregnancy: ISUOG Guidelines. *Ultrasound Obstet Gynecol*. 2016 Feb;47(2):247–63.

6. Gratacós E, Lewi L, Muñoz B, Acosta-Rojas R, Hernandez-Andrade E, Martinez JM, et al. A classification system for selective intrauterine growth restriction in monochorionic pregnancies according to umbilical artery Doppler flow in the smaller twin. *Ultrasound Obstet Gynecol*. 2007 Jul;30(1):28–34.

7. Townsend R, D'Antonio F, Sileo FG, Kumbay H, Thilaganathan B, Khalil A. Perinatal outcome of monochorionic twin pregnancies complicated by selective fetal growth restriction according to management: a systematic review and meta-analysis. *Ultrasound Obstet Gynecol* 2019;53:36-46.

8. Buca D, Pagani G, Rizzo G, et al. Outcome in monochorionic twin pregnancies with selective intrauterine growth restriction according to the umbilical artery Doppler pattern of the smaller twin: a systematic review and meta-analysis. *Ultrasound in Obstet and Gynecol* 2017;50:559-68.

Protected by copyright, including for uses related to text and data mining, AI training, and similar technologies. Ensignement Supérieur (ABES).

- 1
2
3 9. Townsend R, Khalil A. Twin pregnancy complicated by selective growth restriction.
4
5 Curr Opin Obstet Gynecol 2016;28:485-91.
6
7
- 8 10. Monaghan C, Kalafat E, Binder J, Thilaganathan B, Khalil A. Prediction of adverse
9
10 pregnancy outcome in monochorionic- diamniotic twin pregnancies complicated by
11
12 selective fetal growth restriction. Ultrasound Obstet Gynecol 2019;53:200-207.
13
14
- 15 11. Curado J, Sileo F, Bhide A, Thilaganathan B, Khalil A. Early- and late-onset
16
17 selective fetal growth restriction in monochorionic diamniotic twin pregnancy:
18
19 natural history and diagnostic criteria. Ultrasound Obstet Gynecol. 2020
20
21 May;55(5):661–6.
22
23
- 24 12. Khalil A, Thilaganathan B. Selective fetal growth restriction in a monochorionic twin
25
26 pregnancy: a Dilemma for clinicians and a challenge for researchers. Ultrasound
27
28 Obstet Gynecol 2019;53:23-25.
29
30
- 31 13. Heazell AE, Siassakos D, Blencowe H, Burden C, Bhutta ZA, Cacciatore J, et al.
32
33 Stillbirths: economic and psychosocial consequences. Lancet 2016;387:604-16.
34
35
- 36 14. Ishii K, Nakata M, Wada S, et al. Feasibility and preliminary outcomes of
37
38 fetoscopic laser photocoagulation for monochorionic twin gestation with selective
39
40 intrauterine growth restriction accompanied by severe oligohydramnios. The
41
42 Journal of Obstetrics and Gynaecology Research 2015;41:1732-7.
43
44
- 45 15. Chalouhi GE, Marangoni MA, Quibel T, et al. Active management of selective
46
47 intrauterine growth restriction with abnormal Doppler in monochorionic diamniotic
48
49 twin pregnancies diagnosed in the second trimester of pregnancy. Prenatal
50
51 Diagnosis 2013;33:109-15.
52
53
- 54 16. Inklaar MJ, van Klink JM, Stolk TT, et al. Cerebral injury in monochorionic twins
55
56 with selective intrauterine growth restriction: a systematic review. Prenatal
57
58 Diagnosis 2014;34:205-13.
59
60

17. Morsing E, Asard M, Ley D, Stjernqvist K, Marsal K. Cognitive function after intrauterine growth restriction and very preterm birth. *Pediatrics* 2011;127:e874–82

18. Marlow N, Wolke D, Bracewell MA, Samara M. Neurologic and developmental disability at six years of age after extremely preterm birth. *N Engl J Med* 2005;352:9–19.

19. Parra-Cordero M, Bennasar M, Martínez JM, Eixarch E, Torres X, Gratacos E. Cord occlusion in monochorionic twins with early selective intrauterine growth restriction and abnormal umbilical artery Doppler: a consecutive series of 90 cases. *Fetal Diagn Ther* 2016; 39: 186–191.

20. Peng R, Xie H-N, Lin M-F, Yang J-B, Zhou Y, Chen H-Q, Zhu Y. Clinical outcomes after selective fetal reduction of complicated monochorionic twins with radiofrequency ablation and bipolar cord coagulation. *Gynecol Obstet Invest* 2016; 81: 552–558.

21. Malterud K, Siersma VD, Guassora AD. Sample Size in Qualitative Interview Studies: Guided by Information Power. *Qual Health Res.* 2016 Nov;26(13):1753–60.

FIGURES:

Figure 1: Classification of selective fetal growth restriction according to umbilical artery flow patterns

Figure 2: FERN study flowchart

Protected by copyright, including for uses related to text and data mining, AI training, and similar technologies. Ensignement Supérieur (ABES).

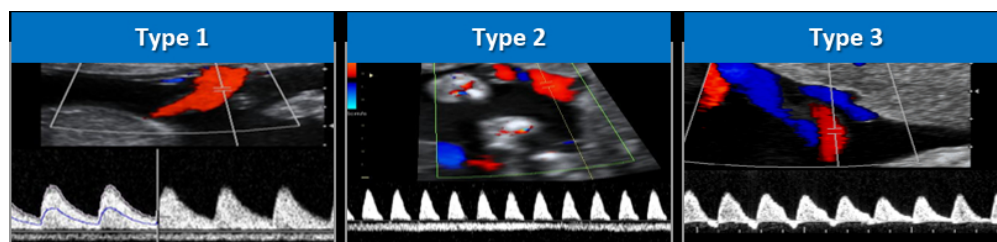


Figure 1: Classification of selective fetal growth restriction according to umbilical artery flow patterns

137x32mm (150 x 150 DPI)

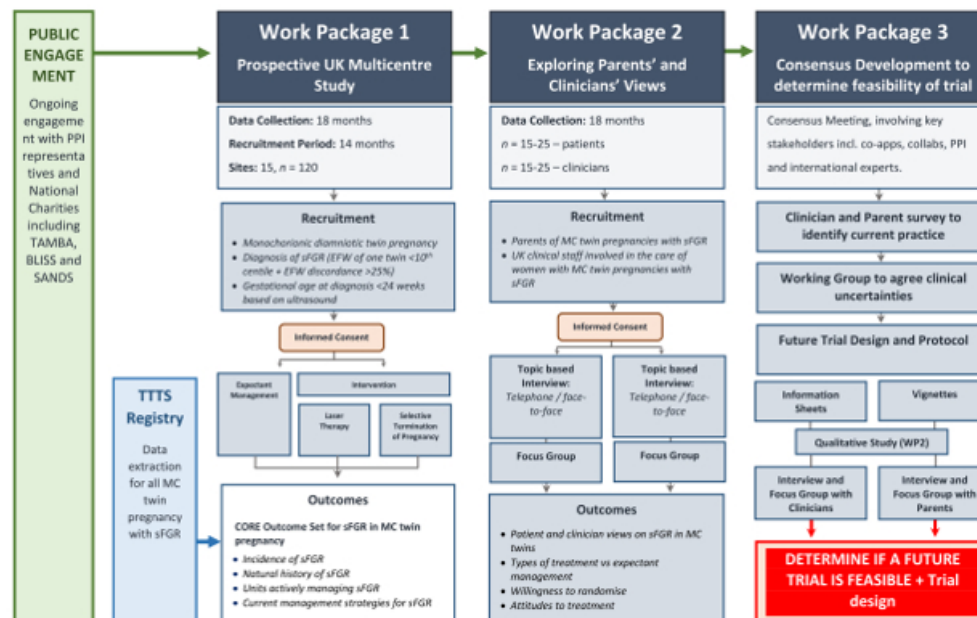


Figure 2: FERN study flowchart

293x190mm (54 x 54 DPI)

BMJ Open

FERN: Is it possible to conduct a Randomised controlled trial of Intervention or Expectant Management for Early Onset Selective Fetal Growth Restriction in Monochorionic Twin Pregnancy: protocol for a prospective multicentre mixed methods feasibility study

Journal:	<i>BMJ Open</i>
Manuscript ID	bmjopen-2023-080021.R2
Article Type:	Protocol
Date Submitted by the Author:	29-May-2024
Complete List of Authors:	<p>Khalil, Asma; University of London, St. George's Medical School PRASAD, SMRITI; Indraprastha Apollo Hospital, Fetal Medicine and Genetics Woolfall, Kerry; University of Liverpool, Institute of Population, Health and Society Mitchell, Tracy; University of Liverpool, Public Health, Policy and Systems Kirkham, Jamie J.; Manchester University, Biostatistics Yaghi, Odai; St George's University Hospital Ricketts, Tracey; University of Liverpool, Department of Women's and Children's Health Attilakos, George; University College London Hospitals NHS Foundation Trust Bailie, Carolyn; Royal Jubilee Maternity Hospital Cornforth, Christine; University of Liverpool, Department of Women's and Children's Health Denbow, Mark; University Hospitals Bristol NHS Foundation Trust Hardman, Louise; Liverpool Women's NHS Foundation Trust Harrold, Jane; University of Liverpool, Department of Women's and Children's Health Parasuraman, Rajeswari; Princess Anne Hospital Leven, Shauna; The Manor House Marsden, Joel; NA Mendoza, Jessica; NA Mousa, Tommy; University of Leicester Nanda, Surabhi; Guy's and St Thomas's Hospital Thilaganathan, Baskaran; St George's University Hospitals NHS Foundation Trust, Department of Obstetrics and Gynaecology Turner, Mark; University of Liverpool, Department of Women's and Children's Health Watson, Michelle; NA Wilding, Karen; University of Liverpool, Clinical Directorate, Faculty of Health and Life Sciences Popa, Mariana; University of Liverpool, Institute of Life and Human Sciences Alfirevic, Zarko; University of Liverpool, Department of Women's and Children's Health Anumba, Dilly; University of Sheffield</p>

	Ashcroft, Richard; City University of London, School of Law Baschet, Ahmet; JHM da Silva Costa, Fabrício ; Griffith University Deprest, Jan; University Hospital Leuven, Gynaecology Fenwick, Natasha; Twins Trust, Research and Resources Officer Haak, Monique; Leiden University Medical Center, Obstetrics and Gynaecology Healey, Andy; King's College London, IOPPN Hecher, Kurt; University Medical Center Hamburg-Eppendorf, Department of Obstetrics and Fetal Medicine Impey, Lawrence; Oxford University Hospitals NHS Trust, Department of Fetal Medicine Jackson, Richard; University of Liverpool, Liverpool Clinical Trials Centre Johnstone, Edward; The University of Manchester, Maternal & Fetal Health Research Centre; St Mary's Hospital, Obstetrics Lewi, Liesbeth; University Hospitals Leuven, Fetal Medicine Unit Lopriore, Enrico; Leiden University Medical Center, Pediatrics Papageorgiou, Aris; University of Oxford, Nuffield Department of Women's & Reproductive Health; University of Oxford, Oxford Maternal & Perinatal Health Institute, Green Templeton College, Pasupathy, Dharmintra; King's College London, Women's Health Academic Centre Sandall, Jane; Kings College, London, Health and Social Care Research Division Sharp, Andrew; University of Liverpool Thangaratinam, Shakila; Queen Mary University of London, BARC (Barts Research Centre for Women's Health), Blizard Institute, Barts and the London School of Medicine and Dentistry; University of Birmingham, Institute of Metabolism and Systems Research Vollmer, B; University of Southampton Yinon, Yoav; Tel Aviv University
Primary Subject Heading:	Obstetrics and gynaecology
Secondary Subject Heading:	Obstetrics and gynaecology, Qualitative research
Keywords:	SURGERY, Mortality, Clinical Trial, Fetal medicine < OBSTETRICS, OBSTETRICS

SCHOLARONE™
Manuscripts

TITLE

FERN: Is it possible to conduct a Randomised controlled trial of Intervention or Expectant Management for Early Onset Selective Fetal Growth Restrictionin Monochorionic Twin Pregnancy: protocol for a prospective multicentre mixed methods feasibility study

Asma Khalil^{1,2,3}, Smriti Prasad¹, Kerry Woolfall⁴, Tracy Karen Mitchell⁴, Jamie Kirkham⁵, Odai Yaghi¹, Tracey Ricketts⁶, Mariana Popa⁴, Zarko Alfirevic⁶, Dilly Anumba⁷, Richard Ashcroft⁸, George Attilakos⁹, Carolyn Bailie¹⁰, Ahmet A Baschat¹¹, Christine Cornforth⁶, Fabricio Da Silva Costa¹², Mark Denbow¹³, Jan Deprest¹⁴, Natasha Fenwick¹⁵, Monique C Haak¹⁶, Louise Hardman¹⁷, Jane Harrold⁶, Andy Healey¹⁸, Kurt Hecher¹⁹, Rajeswari Parasuraman²⁰, Lawrence Impey²¹, Richard Jackson²², Edward Johnstone²³, Shauna Leven¹⁵, Liesbeth Lewi¹⁴, Enrico Lopriore²⁴, Joel Marsden²⁵, Jessica Mendoza²⁵, Tommy Mousa²⁶, Surabhi Nanda²⁷, Aris Papageorgiou²⁸, Dharmintra Pasupathy²⁹, Jane Sandall³⁰, Andrew Sharp⁶, Shakila Thangaratinam^{31,32,33}, Baskaran Thilaganathan³⁴, Mark Turner⁶, Brigitte Vollmer³⁵, Michelle Watson²⁵, Karen Wilding³⁶, Yoav Yinon³⁷ for FERN study team

¹Fetal Medicine Unit, St George's University Hospital, London, UK

²Vascular Biology Research Centre, Molecular and Clinical Sciences Research Institute, St George's University of London, London, UK

³Fetal Medicine Unit, Liverpool Women's Hospital, University of Liverpool, Liverpool, UK

⁴Institute of Population Health, Department of Public Health, Policy and Systems, University of Liverpool

⁵Centre for Biostatistics, The University of Manchester, Manchester Academic Health Science Centre, Manchester, United Kingdom

⁶Harris Wellbeing of Women Research Centre, Department of Women's and Children's Health, Faculty of Health & Life Sciences, University of Liverpool

⁷Academic Unit of Reproductive and Developmental Medicine, Department of Human Metabolism, University of Sheffield, Level 4, Jessop Wing, Tree Root Walk, Sheffield S10 2SF, UK.

⁸Executive Dean and Professor, City Law School, University of London

⁹ Women's Health Division, University College London Hospitals NHS Foundation Trust, London, UK; Institute for Women's Health, University College London, London, UK.

¹⁰ Fetal Medicine, Royal Jubilee Maternity Hospital, Grosvenor Road, Belfast, BT12 6BB, UK.

¹¹ Johns Hopkins Center for Fetal Therapy Department of Gynecology & Obstetrics Johns Hopkins University Baltimore, MD, 21287, USA

¹² Maternal Fetal Medicine Unit, Gold Coast University Hospital, Gold Coast, QLD, Australia

¹³ Fetal Medicine Unit, St Michael's Hospital, University Hospitals Bristol NHS Foundation Trust, Bristol, United Kingdom.

¹⁴ Fetal Medicine Unit, Dept. Obstetrics and Gynecology, University Hospitals Leuven, Herestraat 49, 3000 Leuven, Belgium; Dept of Development and Regeneration, Biomedical Sciences, KU Leuven, Leuven, Belgium.

¹⁵ Twins Trust, The Manor House, Aldershot GU12 4JU, UK

¹⁶ Department of Obstetrics, Fetal Medicine Unit, Leiden University Medical Center, Leiden, The Netherlands.

¹⁷ Liverpool Women's NHS Foundation Trust, Crown Street, Liverpool, L8 7SS, UK

¹⁸ King's Health Economics, Health Service, and Population Research Department, King's College London, London United Kingdom

¹⁹ University Medical Center Hamburg-Eppendorf, Department of Obstetrics and Fetal Medicine, Hamburg, Germany

²⁰ Wessex Fetal Maternal Medicine unit, University Southampton NHS Foundation Trust, Princess Anne Hospital, Southampton, UK

²¹ Department of Fetal Medicine, John Radcliffe Hospital, Oxford University Hospitals NHS Foundation Trust, Oxford OX3 9DU, UK

²² Department of Statistics, Liverpool Clinical Trials Unit, University of Liverpool, United Kingdom

²³ Maternal and Fetal Health Research Centre, Division of Developmental Biology and Medicine, School of Medical Sciences, Faculty of Medicine Biology and Health, University of Manchester, Manchester M13 0WL, UK

²⁴ Department of Paediatrics, Division of Neonatology, Leiden University Medical Center, Leiden, The Netherlands

²⁵ PPIE co-applicant, FERN project

²⁶ Consultant/Honorary Senior Lecturer in Maternal and Fetal Medicine, University of Leicester, United Kingdom

Protected by copyright, including for uses related to text and data mining, AI training, and similar technologies. Ensignement Supérieur (ABES).

²⁷ Fetal Medicine Unit, Guy's and St Thomas's Hospital, London, UK

²⁸ Nuffield Department of Women's & Reproductive Health, University of Oxford, Oxford, UK.

²⁹ Reproduction and Perinatal Centre, Faculty of Medicine and Health, The University of Sydney, Sydney, New South Wales, Australia

³⁰ Division of Women's Health, King's College, London, Women's Health Academic Centre, King's Health Partners, 10th Floor, North Wing, St. Thomas' Hospital, Westminster Bridge Road, London, UK

³¹ WHO Collaborating Centre for Global Women's Health, Institute of Metabolism and Systems Research, University of Birmingham, Birmingham, UK

³² NIHR Biomedical Research Centre, University Hospitals Birmingham, UK

³³ Birmingham Women's and Children's NHS Foundation Trust, Birmingham, UK

³⁴ Director, Fetal Medicine Unit, Department of Obstetrics and Gynaecology, St George's University Hospitals NHS Foundation Trust, London, United Kingdom

³⁵ Clinical Neurosciences, Faculty of Medicine, University of Southampton, Southampton, UK

³⁶ University of Liverpool, Clinical Directorate, Faculty of Health and Life Sciences, Brownlow Hill, Liverpool, L69 3BX

³⁷ Department of Obstetrics and Gynecology, Chaim Sheba Medical Center, Tel-Hashomer, Ramat-Gan 52621, Israel.

Corresponding author:

Professor Asma Khalil MRCOG MD MSc (Epi) DFRH Dip (GUM)

Fetal Medicine Unit

Department of Obstetrics and Gynaecology

St. George's University Hospitals NHS Foundation Trust

Blackshaw Road

London SW17 0QT

United Kingdom.

Email address: asmakhalil79@googlemail.com; akhalil@sgul.ac.uk

Phone: 020 8725 01924

1
2
3
4
5
6
7
8
9
10
11
12
13
14
15
16
17
18
19
20
21
22
23
24
25
26
27
28
29
30
31
32
33
34
35
36
37
38
39
40
41
42
43
44
45
46
47
48
49
50
51
52
53
54
55
56
57
58
59
60

Keywords: Twin, multiple, pregnancy, monochorionic, selective, fetal growth restriction, stillbirth, intrauterine demise, neonatal, laser, surgery, morbidity, mortality, clinical trial

For peer review only

Protected by copyright, including for uses related to text and data mining, AI training, and similar technologies. Enseignement Supérieur (ABES).

ABSTRACT

INTRODUCTION:

Selective Fetal Growth Restriction (sFGR) in monochorionic twin pregnancy, defined as an estimated fetal weight (EFW) of one twin <10th centile and EFW discordance $\geq 25\%$, is associated with stillbirth and neurodisability for both twins. The condition poses unique management difficulties: on the one hand, continuation of the pregnancy carries a risk of death of the smaller twin, with a high risk of co-twin demise (40%) or co-twin neurological sequelae (30%). On the other, early delivery to prevent death of the smaller twin may expose the larger twin to prematurity, with the associated risks of long-term physical, emotional, and financial cost from neurodisability, such as cerebral palsy.

When there is severe and early sFGR, before viability, delivery is not an option. In this scenario there are currently three main management options: (1) Expectant management (2) Selective termination of the smaller twin (3) Placental laser photocoagulation of interconnecting vessels. These management options have never been investigated in a randomised controlled trial (RCT). The best management option is unknown, and there are many challenges for a potential RCT. These include the rarity of the condition resulting in a small number of eligible pregnancies, uncertainty whether pregnant women will agree to participate in such a trial and whether they will agree to be randomised to expectant management or active fetal intervention, and the challenges of a robust and long-term outcome measures. Therefore, the main objective of the FERN study is to assess the feasibility of conducting an RCT of active intervention versus expectant management in monochorionic twin pregnancies with early onset (prior to 24 weeks) sFGR.

1
2
3
4
5
6
7
8
9
10
11
12
13
14
15
16
17
18
19
20
21
22
23
24
25
26
27
28
29
30
31
32
33
34
35
36
37
38
39
40
41
42
43
44
45
46
47
48
49
50
51
52
53
54
55
56
57
58
59
60

METHODS AND ANALYSIS: The FERN study is a prospective mixed-methods feasibility study. The primary objective is to recommend whether an RCT of intervention versus expectant management of sFGR in monochorionic twin pregnancy is feasible by exploring women’s preference, clinician’s preference, current practice and equipoise and numbers of cases. To achieve this, we propose three distinct Work Packages (WPs). WP1: A Prospective UK Multicentre Study, WP2A: a Qualitative Study Exploring Parents’ and Clinicians’ Views and WP3: a Consensus Development to Determine Feasibility of a Trial. Eligible pregnancies will be recruited to WP1 and WP2, which will run concurrently. The results of these two WPs will be utilized in WP3 to develop consensus on a future definitive study. The duration of the study will be 53 months, comprised of 10 months set-up, 39 months recruitment, 42 months data collection, and 5 months data analysis, report writing and recommendations. The pragmatic sample size for WP1 is 100 monochorionic twin pregnancies with selective fetal growth restriction. For WP2, interviews will be conducted until data saturation and sample variance are achieved, i.e. when no new major themes are being discovered. Based on previous similar pilot studies, this is anticipated to be approximately 15-25 interviews in both the parent and clinician groups. Engagement of at least 50 UK clinicians is planned for WP3.

ETHICS AND DISSEMINATION: This study has received ethical approval from the Health Research Authority (HRA) South West - Cornwall and Plymouth Ethics Committee (REC reference 20/SW/0156, IRAS ID 286337). All participating sites will undergo site specific approvals for assessment of capacity and capability by the HRA. The results of this study will be published in peer-reviewed journals and

Protected by copyright, including for uses related to text and data mining, AI training, and similar technologies.
Enseignement Supérieur (ABES)

presented at national and international conferences. The results from the FERN project will be used to inform future studies.

TRIAL REGISTRATION: This study is included on the ISRCTN Registry (ISRCTN16879394) and, the NIHR Central Portfolio Management System (CPMS), CRN: Reproductive Health and Childbirth Specialty (UKCRN reference 47201).

STRENGTHS AND LIMITATIONS OF THIS STUDY:

- The research question – acceptability and feasibility of this proposed trial has not been investigated previously.
- Utilizes a mixed-methods design incorporating prospective multicentre, qualitative, and consensus-building approaches to enhance methodological robustness and rigorous multifaceted investigation.
- Includes a prospective UK multicentre study (WP1) that systematically gathers data across various centres to ensure diverse input and data richness.
- Employs qualitative interviews to deepen understanding of participant and clinician perspectives, enriching the data's contextual validity.
- Given the rarity of the condition under study, the study may face challenges in achieving sufficient power to fully explore certain perinatal outcomes.

1
2
3
4
5
6
7
8
9
10
11
12
13
14
15
16
17
18
19
20
21
22
23
24
25
26
27
28
29
30
31
32
33
34
35
36
37
38
39
40
41
42
43
44
45
46
47
48
49
50
51
52
53
54
55
56
57
58
59
60

INTRODUCTION

Twin pregnancy is associated with an increased risk of adverse fetal and neonatal outcomes, such as stillbirth and neonatal death compared to singletons.¹ Twin pregnancies are also at 4-fold increased risk of neurological sequelae such as cerebral palsy compared to singletons.² Monochorionic (MC) twin pregnancies, where both fetuses originate from the same conception and share one placenta, represent 25-30% of all twin pregnancies.³ MC twin pregnancies pose unique difficulties for management because of complications from a shared placenta and communication between the fetal circulations. These can lead to the two common pathologies seen in MC twin pregnancies: twin to twin transfusion syndrome (TTTS) and selective fetal growth restriction (sFGR). sFGR, when one fetus grows normally whilst the other is growth restricted, affects approximately 10-15% of monochorionic twin pregnancies. Definitions of sFGR in monochorionic twin pregnancy vary, but current UK guidelines define sFGR as an inter-twin estimated fetal weight (EFW) discordance of >20% after 20 weeks.^{3,4} The ISUOG guideline supports using the smaller twin being <10th centile and an inter-twin discordance of $\geq 25\%$.⁵ Early onset sFGR, occurring prior to 24 weeks' gestation, is less common but is associated with greater risk to the fetus and poses substantial management difficulties due to the distance from viability.⁶ sFGR in monochorionic twin pregnancy is conventionally classified into 3 subtypes based on the umbilical artery (UA) Doppler (Figure 1) according to Gratacos et al (2007): Type I (positive end-diastolic flow (EDF) in the UA) has the best outcome, Type II (persistent absent / reversed EDF) the worst prognosis, Type III (intermittently absent / reversed EDF) has an unpredictable course.⁷

There are three main management options for sFGR:

(1) Expectant management: close monitoring until the decision for timed birth is made. This carries a risk of intra-uterine demise (IUD) of the smaller twin, which may result in co-twin demise (40%) or neurological sequelae (30%), thought to be secondary to hypotension in the larger twin due to intertwin transfusion via placental vascular connections.³ (2) Selective termination by bipolar cord coagulation (BCC) or radiofrequency ablation (RFA). This may protect the larger baby from harm if the smaller twin were to subsequently die. However, termination may not be acceptable to some parents; and (3) Placental laser photocoagulation of connecting vessels to protect the larger twin in the event of death of the smaller twin. This is often technically challenging and may worsen the outcomes of the smaller twin.⁸⁻¹¹ Active intervention options include selective termination through either BCC or RFA, as well as placental laser photocoagulation of connecting vessels

We conducted a preliminary survey of 29 UK fetal medicine clinicians to establish their current practice for the management of sFGR in monochorionic twin pregnancies.¹² Our survey revealed significant variation in diagnostic criteria, management and surveillance protocols for the three different types of early onset sFGR in MCDA twin.¹² Great uncertainty also remains over what interventions, if any, women would be willing to accept at different gestations. The current paucity of qualitative data and patient experience information may hamper a subsequent clinical trial.¹² The loss of a fetus is associated with long-term psychological effects for the parents.¹³ Furthermore, the lifelong cost of prematurity-associated neurodisability, such as cerebral palsy, may be substantial.¹⁴⁻¹⁸

Therefore, there is a lack of consensus on the optimal management (expectant or intervention) of sFGR in monochorionic twin pregnancies and the most appropriate timing of delivery. Each management option carries risks and benefits in terms of the

key outcomes of stillbirth and cerebral palsy; what is currently unknown is the relative risk-benefit ratio for each option.

No randomised controlled trials (RCT) or Cochrane reviews have investigated sFGR. Until recently, published systematic reviews^{9,11} assessed mortality and morbidity, especially cerebral injury¹⁸, but did not compare outcomes based on management. We have published a meta-analysis of the perinatal mortality and morbidity in sFGR according to management⁸ which demonstrated significant bias in the published literature. Studies were retrospective and non-randomised, with significant heterogeneity in included populations, management, and outcomes.⁸ This meta-analysis was therefore unable to explore the association between gestational age at delivery and neonatal outcomes. This is fundamental as gestational age at delivery is the main determinant of perinatal outcome in twins.^{17,18} Primary research has not identified a significant difference between RFA and BCC for selective fetal reduction for sFGR in monochorionic twin pregnancy.^{19,20} In summary, to quote the Royal College of Obstetricians and Gynaecologists (RCOG)³, ‘Due to a lack of available high-quality evidence, there is no clear guidance on how to manage sFGR in such pregnancies.’

The primary objective is to recommend whether an RCT of intervention versus expectant management of sFGR in monochorionic twin pregnancy is feasible by exploring women’s preference, clinician’s preference, current practice and equipoise and numbers of cases.

METHODS AND ANALYSIS

STUDY DESIGN:

FERN is a mixed-methods feasibility study with three distinct Work Packages (WPs) to determine the overall research objectives (Figure 2).

- **Work Package 1 - A Prospective UK Multicentre Study**

We will conduct a prospective UK multicentre study to determine the incidence, natural history, and outcomes of MCDA twin pregnancies complicated by sFGR according to whether they had expectant management or fetal intervention.

The data will provide the following key outcomes:

- 1) Proportion of women who opt for expectant management, active fetal intervention or termination of the entire pregnancy. We will have reasonable precision of these estimates from current routine practice, which are critical for any future research including an RCT;
- 2) We will learn about management of these pregnancies, i.e. frequency of monitoring, timing of delivery, thresholds for intervention, etc; and
- 3) Incidence of adverse outcomes. However, some subgroups may be small so the precision of some estimates might be inaccurate, with wide 95% confidence intervals. We will use the data from the UK twin registry to ascertain the accuracy of these estimates.

Eligibility criteria- Women with a MCDA twin pregnancy and a diagnosis of sFGR (estimated fetal weight (EFW) of one twin $<10^{\text{th}}$ centile + EFW discordance $\geq 25\%$) and gestational age at diagnosis between 16^{+0} - 23^{+6} weeks based on ultrasound and who can provide informed consent will be considered eligible for WP1. The exclusion criteria include higher order multiple pregnancies, maternal age under 18 years, other monochorionic complications (such as TTTS or twin anaemia polycythaemia sequence before enrolment), other rare complicated monochorionic twin pregnancies

at enrolment (such as twin reversed arterial perfusion syndrome (TRAP), known karyotype abnormality, known major fetal structural abnormality defined as a lethal, incurable or curable severe abnormality with a high risk of residual disability), an indication for immediate delivery, pre-term pre-labour rupture of membranes before enrolment. In addition, women who lack the capacity to give informed consent, or suffer from any medical or psychiatric condition which compromises their ability to participate will also be excluded.

Recruitment and sampling - We will approach all women with sFGR as defined by the eligibility criteria. Further to two no-cost extensions granted by the NIHR due to delayed set-up and recruitment and rarity of the condition under study, there will be a 42 month data collection period (39 months recruitment) from 22 UK sites, (compared to the originally proposed 18 month data collection period). The planned start and end date for the study is 01/07/2021 and 30/11/2025 respectively. Our recent survey suggests that we should be able to recruit two women per month per centre; if we assume a conservative 40% recruitment rate, our pragmatic estimate is that we will recruit over 100 women in the study period. All participants will be recruited from their local fetal medicine or antenatal clinic. They will be contacted in person by a member of the clinical research team (Principal Investigator (PI) /Research Midwife/Delegated Authority) and invited to take part in the study. Potential participants will be given written and verbal information on the FERN study and provided with the opportunity to ask questions and take any additional time required to consider taking part in the study. Following this, participants will be asked to sign the study-specific informed consent form (ICF) in the presence of the site researcher. Once eligibility has been confirmed by the PI at the site, and informed consent has been obtained, the participant will be registered and then entered into the study using a bespoke electronic data capture

1
2
3 system that will generate a unique participant identification number. The data will be
4 collected on a range of data items described on the FERN REDCap database. The
5 follow-up will continue till date of discharge of baby/babies from the hospital/neonatal
6 unit. This database is designed and maintained by the University of Liverpool, IT
7 Services in collaboration with the Chief Investigator and Research Manager. The
8 eCRF (electronic Case Record Form) is the primary data collection instrument for the
9 study. All data requested on the eCRF must be recorded and all missing data
10 explained. WP1 is a prospective observational study therefore, all data will be collected
11 prospectively by trained members of the Research team at each study site.
12
13
14
15
16
17
18
19
20
21
22
23
24
25

26 **Sample size calculation-** No formal power calculation or primary outcome data will
27 be determined for any WP in this study as this is a feasibility study and does not involve
28 any formal hypothesis testing. We will assess the feasibility of recruiting women with
29 a monochorionic twin pregnancy complicated by sFGR to collect detailed information
30 about pregnancy management and outcome. The success of this WP will be
31 determined by the acceptability of the study by women and clinicians. This will be
32 determined as the ability to recruit and retain participants. We would expect to recruit
33 in the region of 100 participants across the UK over a 39-month period, but we will
34 continue to recruit until the recruitment period is complete. This is a pragmatic number
35 which is based on the typical number of sFGR patients seen per annum in large
36 consultant led NHS units within the UK.
37
38
39
40
41
42
43
44
45
46
47
48
49

50 **Patient and public involvement** – No patient and public involvement (PPI) was
51 sought during the set up or design of this feasibility study.
52
53
54
55
56
57
58
59
60

Outcome measures - This study will assess the feasibility of collecting outcome data from women with a MCDA twin pregnancy complicated by sFGR.

• **Work Package 2 – Exploring Patients’ and Clinicians’ Views**

This will involve qualitative research, including interviews and focus groups (if there is divergence of opinion about trial acceptability) with women and their partners (if applicable), as well as with clinicians involved in the management of monochorionic twin pregnancies. Qualitative methods will explore parents’ and clinicians’ perspectives on:

- 1) Future trial design including views on active intervention and expectant management, randomisation, outcomes, and approach to recruitment and consent, including decision making and length and content of trial information materials;
- 2) Factors influencing parent and clinician decision-making when potential outcomes include death or serious disability of one or both twins; and
- 3) Acceptability of a future trial, including potential barriers to recruitment, consent decisions, trial procedures, equipoise; inclusion / exclusion criteria and training needs.

Eligibility Criteria - Mothers and partners (if applicable) of MCDA twin pregnancies complicated by sFGR in the previous three years; and clinical staff involved in the management of monochorionic twin pregnancies.

Recruitment and sampling - Women and their partners (if applicable) will be recruited through two routes to maximise the potential participation within the recruitment period and ensure that women from all management groups are

Protected by copyright, including for uses related to text and data mining, AI training, and similar technologies.
Enseignement Supérieur (ABES)

represented. Firstly, all women and partners (if applicable) approached to take part in WP1 will be invited to consent to be contacted by a member of the WP2 research team to discuss taking part in this aspect of the study, regardless of ultimate participation in WP1. Secondly, the qualitative research team will contact stakeholders (e.g. charity leads / Chief Executive Officers) of twin support groups (e.g. Twins Trust - formerly Twins and Multiple Births Association; TAMBA) inviting them to post a FERN study media advert on the support group's website and / or social media pages (e.g. Facebook and Twitter) or member email lists. If divergence in opinions on trial intervention and acceptable outcomes is observed in the early analysis of interviews, we will use social media (route 2) to recruit parents to a focus group (~6 to 10 parents) in the Northwest of England (pragmatic choice as location of the Qualitative study team) with the aim of reaching consensus about an acceptable trial design. A Focus Group Topic Guide will be developed based on interview findings.

For clinician recruitment, a comprehensive database of clinicians, nationally and internationally, who lead the management of sFGR will be developed by the CI, co-applicant team and collaborators. This database will be used to identify which clinicians will be invited to take part in this aspect of the study. Secondly, a FERN Practitioner Online Recruitment advert will be posted on relevant social media pages. As with the women and partner interviews, if divergence in opinions is observed in the early analysis of interviews, clinicians will be recruited to a focus group (~8-10 site healthcare professionals) with the aim of reaching consensus about an acceptable trial design. A Focus Group Topic Guide will be developed based on interview findings.

Sample size calculation- To ensure sample variance we will include parents with experience of intervention and expectant management of sFGR, bereaved and non-bereaved parents, and clinicians in favour of both fetal intervention and expectant

management. Interviews will be conducted till we achieve information power,²¹ which is the point at which data addresses the study aims; sample variance (e.g., parents offered expectant management or intervention, bereaved and non-bereaved parents, and clinicians in favour of intervention or expectant management) and, use of theory (e.g. Bioethical principles) and quality of dialogue.

Primary outcome measures- Qualitative element of the study will explore parents' and clinicians' perspectives and present a summary of findings and recommendations about trial design/feasibility to feed into WP3.

- **Work Package 3 - Consensus Development to Determine Feasibility of a Trial**

We will utilise information provided in WP1 and WP2 to develop a consensus on a future definitive study. The effect of a design of a future RCT, if deemed acceptable and feasible, on management of sFGR in monochorionic twin pregnancy will be assessed: power calculation, economic feasibility, identifying the research cohort (involving subtypes, gestation, intervention, and control arms) and key outcomes.

A survey of clinicians will be performed as part of WP3 to identify current practices and opinion. Clinicians from the curated database of experts will be invited to participate in the survey. The results of this survey will be used to inform the selected consensus process approach that will ultimately formulate optimal trial design for use in a planned clinical trial in women with monochorionic twin pregnancies complicated by sFGR. Depending on the results and findings of the previous work packages, we will take an adaptive approach when it comes to reaching consensus on determining whether a future trial is possible (for example, this could take the form of Delphi survey or a structured consensus meeting). Important issues and trial design constructs

Protected by copyright, including for uses related to text and data mining, AI training, and similar technologies. Enseignement Supérieur (ABES).

raised from these previous work streams will be formulated into a series of structured items for consideration. We will aim for at least 50% or more voting on the feasibility and acceptability of the study design/eligibility to take things forward as 'plausible'. Plausibility will be defined as items where at least 50% of the voting participants deem the item as feasible and acceptable. An iterative process will be followed to allow further discussion on items when needed. The consensus opinion of relevant stakeholders on key preferred scenarios will be used to develop a protocol for this planned trial. The feasibility of this protocol will then be further consolidated using qualitative research and a final consensus process. If it becomes apparent that an RCT would not be feasible/acceptable, future research design would be agreed upon by a structured consensus meeting.

STATISTICAL / DATA ANALYSIS CONSIDERATIONS

Patients will be analysed on an intention to treat (ITT) basis at the time of recruitment, retaining all patients irrespective of any protocol deviations. Further secondary analysis will be carried out on a per protocol population. Further analyses may be carried out on planned subgroups (e.g., those who meet the inclusion criteria for a future study) as required. As this is an exploratory study no formal levels of significance are set. All statistics will be presented alongside 95% confidence intervals to give an indication of the level of precision. The likelihood of missing data is small given the standard procedure in place to manage the study centrally. Final analyses will take place on a complete-case basis with no adjustments made (e.g., multiple imputation) in the case of missing data. Analysis of study data will take place once all participants have received the planned follow-up and all data are available for analysis. Continuous data will be summarised as median, inter-quartile range (IQR) and ranges. Categorical

data shall be summarised as frequencies of counts and associated percentages. Multivariate data analysis techniques will be used to attempt to find natural groupings in the generated data. In particular hierarchical cluster analysis (HCA) and principle component analysis (PCA) techniques will be used.

Thematic analysis of qualitative data from the WP2 interviews and focus group(s) will be assisted using NVivo 12 qualitative data analysis package and SPSS software for statistical analysis. Whilst data will be analysed thematically the focus will be modified to fit with the criterion of catalytic validity, whereby findings should be relevant to future research and practice (in particular, the design of the potential definitive RCT). Analysis will also draw upon philosophical theory, concepts, and methods (such as conceptual clarification and balanced argumentation) in an aim to develop recommendations that are defensible and consistent with Key principles of biomedical ethics. This empirical ethics approach will facilitate the identification of practices or processes that should be challenged or modified in trial design. Quantitative analysis will involve simple descriptive statistics and the chi-square test for trend. Data from each method will be analysed separately then synthesized using constant comparative analysis. If it becomes apparent that a RCT would not be feasible/acceptable, future research design would be agreed upon by a structured consensus meeting.

Data monitoring:

As there are no formal hypotheses being tested, there are no formal stopping rules (other than safety) or mechanisms defined here to stop the study prior to the planned end of study. The study does have a formal independent oversight committee that will be able to review at regular intervals all accumulating data. The main responsibility of this committee will be to review the recruitment of participants, the collection of all essential data and to assess patient safety. The Study Oversight / Steering Committee

Protected by copyright, including for uses related to text and data mining, AI training, and similar technologies. Enseignement Supérieur (ABES).

will consist of: i) Chief Investigator, ii) Independent clinician (Chair), iii) Research Manager, iv) Study Statistician, v) Another independent clinician; vi) PPIE (Patient and Public Involvement and Engagement) Co Applicant, vii) Sponsor; and viii) Lead Site Representative. The role of the Oversight / Steering Committee is to provide oversight of the study. In particular, this committee will concentrate on the progress of the study, adherence to the protocol, participant safety and consideration of new information.

Ethics and dissemination

This study has received ethical approval from the Health Research Authority (HRA) Ethics Committee South West – Cornwall and Plymouth (REC reference 20/SW/0156, IRAS ID 286337), but all participating sites must undergo site specific assessment of capacity and capability via the HRA. Any adverse events or protocol deviation will be identified and reported. The study will be conducted in accordance with, but not limited to, the Human Rights Act 1998, the Data Protection Act 2018, Freedom of Information Act 2000 subject to the provisions of sections 41 and 43 thereof, the EU (European Union) Clinical Trials Directive, ICH-GCP, the Declaration of Helsinki 1996 and the UK Policy framework for Health and Social Care research as amended from time to time. All data will be recorded, collected, stored and processed, in accordance with GDPR (EU) 2016/679.

NIHR disclaimer: “This work is independent research funded by the National Institute for Health Research (NIHR Health Technology Assessment, NIHR128596 – FERN: Intervention or Expectant Management for Early Onset Selective Fetal Growth Restriction in Monochorionic Twin Pregnancy). The views expressed in this

publication are those of the author(s) and not necessarily those of the NHS, the National Institute for Health Research or the Department of Health and Social Care”.

The FERN Study acknowledges the support of the UK Clinical Research Network (UKCRN).

AUTHORS CONTRIBUTIONS:

AK conceptualized the project and is the chief investigator of the FERN project, obtained the grant for the study, drafted the protocol, revised it for intellectual content, approved the final version and is the corresponding author. SP drafted the first version of the paper and revised it and is a member of the study management team. OY revised the paper for intellectual content. TR is the FERN project study coordinator and revised the paper for intellectual content. AH, BT, BV, CC, JK, JS, KW (Woolfall), KW (Wilding), LH, MT, RA, RJ, ST, ZA and AS are the co-applicants for the study grant and revised the paper for intellectual content. JK is also the study statistician. JM (Mendoza), JM (Marsden), MW, NF, SL are the PPIE co-applicants for the study grant and reviewed the protocol. MH, JH, RP,EJ, LI, MP, TKM, AAB, JD, LL, KH, EL, DP, AP, CB, DA, GA, MD, SN, TM, FDC, YY are the collaborators for the study grant and revised the paper for intellectual content. All co-authors accept responsibility for the decision to submit for publication. The corresponding author attests that all listed authors meet authorship criteria and that no others meeting the criteria have been omitted.

FUNDING STATEMENT: This work is funded by National Institute for Health and Care Research (NIHR) via grant number NIHR128596.

COMPETING INTERESTS STATEMENT: None

REFERENCES:

1. Draper ES, Gallimore ID, Kurinczuk JJ, Kenyon S; the MBRRACE-UK Collaboration. MBRRACE-UK Perinatal Confidential Enquiry: Stillbirths and neonatal deaths in twin pregnancies. The Infant Mortality and Morbidity Studies, Department of Health Sciences, University of Leicester: Leicester, 2020.
2. Scher AI, Petterson B, Blair E, Ellenberg JH, Grether JK, Haan E, et al. The Risk of Mortality or Cerebral Palsy in Twins: A Collaborative Population-Based Study. *Pediatr Res*. 2002 Nov;52(5):671–81.
3. Royal College of Obstetricians and Gynaecologists. Green-top Guideline No. 51. Management of Monochorionic Twin Pregnancy. November 2016.
4. Khalil A, Beune I, Hecher K, Wynia K, Ganzevoort W, Reed K, Lewi L, Oepkes D, Gratacos E, Thilaganathan B, Gordijn SJ. Consensus definition and essential reporting parameters of selective fetal growth restriction in twin pregnancy: a Delphi procedure. *Ultrasound Obstet Gynecol* 2019;53:47-54.
5. Khalil A, Rodgers M, Baschat A, Bhide A, Gratacos E, Hecher K, et al. ISUOG Practice Guidelines: role of ultrasound in twin pregnancy: ISUOG Guidelines. *Ultrasound Obstet Gynecol*. 2016 Feb;47(2):247–63.

6. Gratacós E, Lewi L, Muñoz B, Acosta-Rojas R, Hernandez-Andrade E, Martinez JM, et al. A classification system for selective intrauterine growth restriction in monochorionic pregnancies according to umbilical artery Doppler flow in the smaller twin. *Ultrasound Obstet Gynecol*. 2007 Jul;30(1):28–34.

7. Townsend R, D'Antonio F, Sileo FG, Kumbay H, Thilaganathan B, Khalil A. Perinatal outcome of monochorionic twin pregnancies complicated by selective fetal growth restriction according to management: a systematic review and meta-analysis. *Ultrasound Obstet Gynecol* 2019;53:36-46.

8. Buca D, Pagani G, Rizzo G, et al. Outcome in monochorionic twin pregnancies with selective intrauterine growth restriction according to the umbilical artery Doppler pattern of the smaller twin: a systematic review and meta-analysis. *Ultrasound in Obstet and Gynecol* 2017;50:559-68.

9. Townsend R, Khalil A. Twin pregnancy complicated by selective growth restriction. *Curr Opin Obstet Gynecol* 2016;28:485-91.

10. Monaghan C, Kalafat E, Binder J, Thilaganathan B, Khalil A. Prediction of adverse pregnancy outcome in monochorionic- diamniotic twin pregnancies complicated by selective fetal growth restriction. *Ultrasound Obstet Gynecol* 2019;53:200-207.

11. Curado J, Sileo F, Bhide A, Thilaganathan B, Khalil A. Early- and late-onset selective fetal growth restriction in monochorionic diamniotic twin pregnancy: natural history and diagnostic criteria. *Ultrasound Obstet Gynecol*. 2020 May;55(5):661–6.

12. Khalil A, Thilaganathan B. Selective fetal growth restriction in a monochorionic twin pregnancy: a Dilemma for clinicians and a challenge for researchers. *Ultrasound Obstet Gynecol* 2019;53:23-25.

Protected by copyright, including for uses related to text and data mining, AI training, and similar technologies. Ensignement Supérieur (ABES).

13. Heazell AE, Siassakos D, Blencowe H, Burden C, Bhutta ZA, Cacciatore J, et al. Stillbirths: economic and psychosocial consequences. *Lancet* 2016;387:604-16.
14. Ishii K, Nakata M, Wada S, et al. Feasibility and preliminary outcomes of fetoscopic laser photocoagulation for monochorionic twin gestation with selective intrauterine growth restriction accompanied by severe oligohydramnios. *The Journal of Obstetrics and Gynaecology Research* 2015;41:1732-7.
15. Chalouhi GE, Marangoni MA, Quibel T, et al. Active management of selective intrauterine growth restriction with abnormal Doppler in monochorionic diamniotic twin pregnancies diagnosed in the second trimester of pregnancy. *Prenatal Diagnosis* 2013;33:109-15.
16. Inklaar MJ, van Klink JM, Stolk TT, et al. Cerebral injury in monochorionic twins with selective intrauterine growth restriction: a systematic review. *Prenatal Diagnosis* 2014;34:205-13.
17. Morsing E, Asard M, Ley D, Stjernqvist K, Marsal K. Cognitive function after intrauterine growth restriction and very preterm birth. *Pediatrics* 2011;127:e874–82
18. Marlow N, Wolke D, Bracewell MA, Samara M. Neurologic and developmental disability at six years of age after extremely preterm birth. *N Engl J Med* 2005;352:9–19.
19. Parra-Cordero M, BennasarM, Mart'inez JM, Eixarch E, Torres X, Gratacos E. Cord occlusion in monochorionic twins with early selective intrauterine growth restriction and abnormal umbilical artery Doppler: a consecutive series of 90 cases. *Fetal Diagn Ther* 2016; 39: 186–191.

20. Peng R, Xie H-N, Lin M-F, Yang J-B, Zhou Y, Chen H-Q, Zhu Y. Clinical outcomes after selective fetal reduction of complicated monochorionic twins with radiofrequency ablation and bipolar cord coagulation. *Gynecol Obstet Invest* 2016; 81: 552–558.

21. Malterud K, Siersma VD, Guassora AD. Sample Size in Qualitative Interview Studies: Guided by Information Power. *Qual Health Res.* 2016 Nov;26(13):1753–60.

FIGURES:

Figure 1: Classification of selective fetal growth restriction according to umbilical artery flow patterns

Figure 2: FERN study flowchart

Protected by copyright, including for uses related to text and data mining, AI training, and similar technologies. Enseignement Supérieur (ABES).

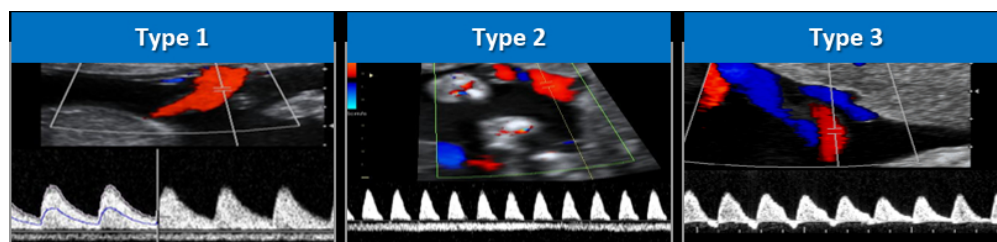


Figure 1: Classification of selective fetal growth restriction according to umbilical artery flow patterns

137x32mm (150 x 150 DPI)

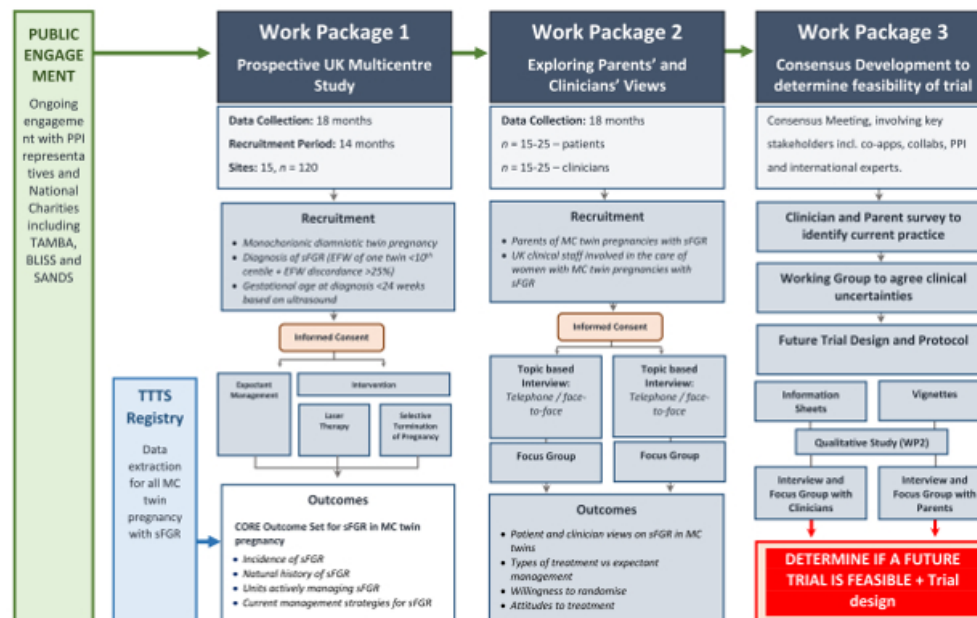


Figure 2: FERN study flowchart

293x190mm (54 x 54 DPI)