

Supplementary Appendix for:

FEV1 and Survival in Operable Non-Small Cell Lung Cancer: A Prospective Study with Propensity Score Overlap Weighting

[Table of Contents](#)

Supplementary Tables

Supplementary Table 1.....

3

Supplementary Table 2.....

4

Supplementary Table 3.....

5

Supplementary Figure 1

6

Supplementary Table 1. FEV1, FVC and MVV Results.

Variables	Total (n=775)	Male (n=460)	Female (n=315)	P value
FVC, L	2.93±0.72	3.26±0.65	2.47±0.54	<0.001
FEV1, L	2.33±0.56	2.53±0.55	2.03±0.42	<0.001
FEV1%pred, %	89±16	86±15	95±16	<0.001
FEV1/FVC, %	80±10	78±10	83±9	<0.001
MVV, L	98.27±27.93	107.88±27.83	84.25±21.42	<0.001

Abbreviation: FEV1, Forced Expiratory Volume in One Second; FVC, Forced Vital Capacity;

MVV, Maximal voluntary ventilation; RFS, Relapse-Free Survival.

Values are presented as mean ± standard deviation.

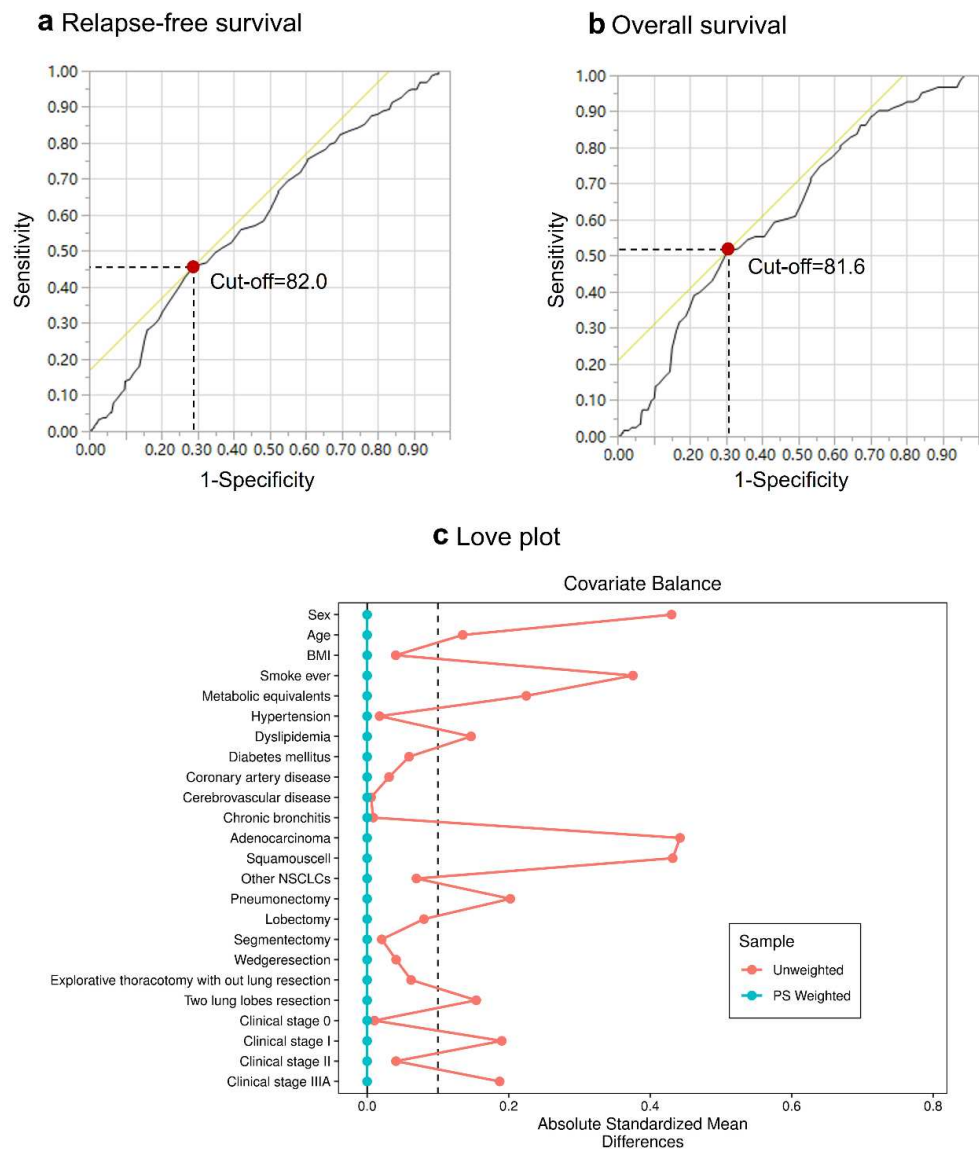
Supplementary Table 2. Interaction *P* Value of the Interaction Tests.

Factors	Relapse-Free Survival	Overall Survival
Gender	0.91	0.09
Age	0.99	0.57
Body mass index	0.03	0.01
Smoking ever	0.52	0.15
Metabolic equivalent	0.60	0.46
Hypertension	0.41	0.30
Dyslipidemia	0.78	0.58
Type 2 diabetes mellitus	0.22	0.45
Coronary artery disease	0.57	0.45
Cerebrovascular disease	0.92	0.36
Chronic bronchitis	0.48	0.90
Histology	0.09	0.11
Type of resection	0.29	0.93
Clinical stage	0.44	0.52

Supplementary Table 3. Bootstrapping internal validation between FEV1%pred and long-term prognosis.

	Brier score [95 % CI]	calibration slope [95 % CI]	C-index [95 % CI]
RFS	0.18 [0.17 to 0.19]	0.79 [0.66 to 0.92]	0.57 [0.52 to 0.62]
OS	0.12 [0.11 to 0.13]	0.71 [0.65 to 0.77]	0.55 [0.52 to 0.58]

Abbreviation: FEV1, Forced Expiratory Volume in One Second; OS, overall survival; RFS, Relapse-Free Survival.



Supplementary Figure 1. The Receiver Operating Characteristics (ROC) Curves of the FEV1%pred for Relapse-free Survival (a) and Overall Survival (b), and the Love Plot (c) for Absolute Standardised Mean Difference before and after Overlap Weighting Propensity Score to Assess the Balance in Covariates between Participants with FEV1%pred $\geq 82\%$ and $<82\%$.