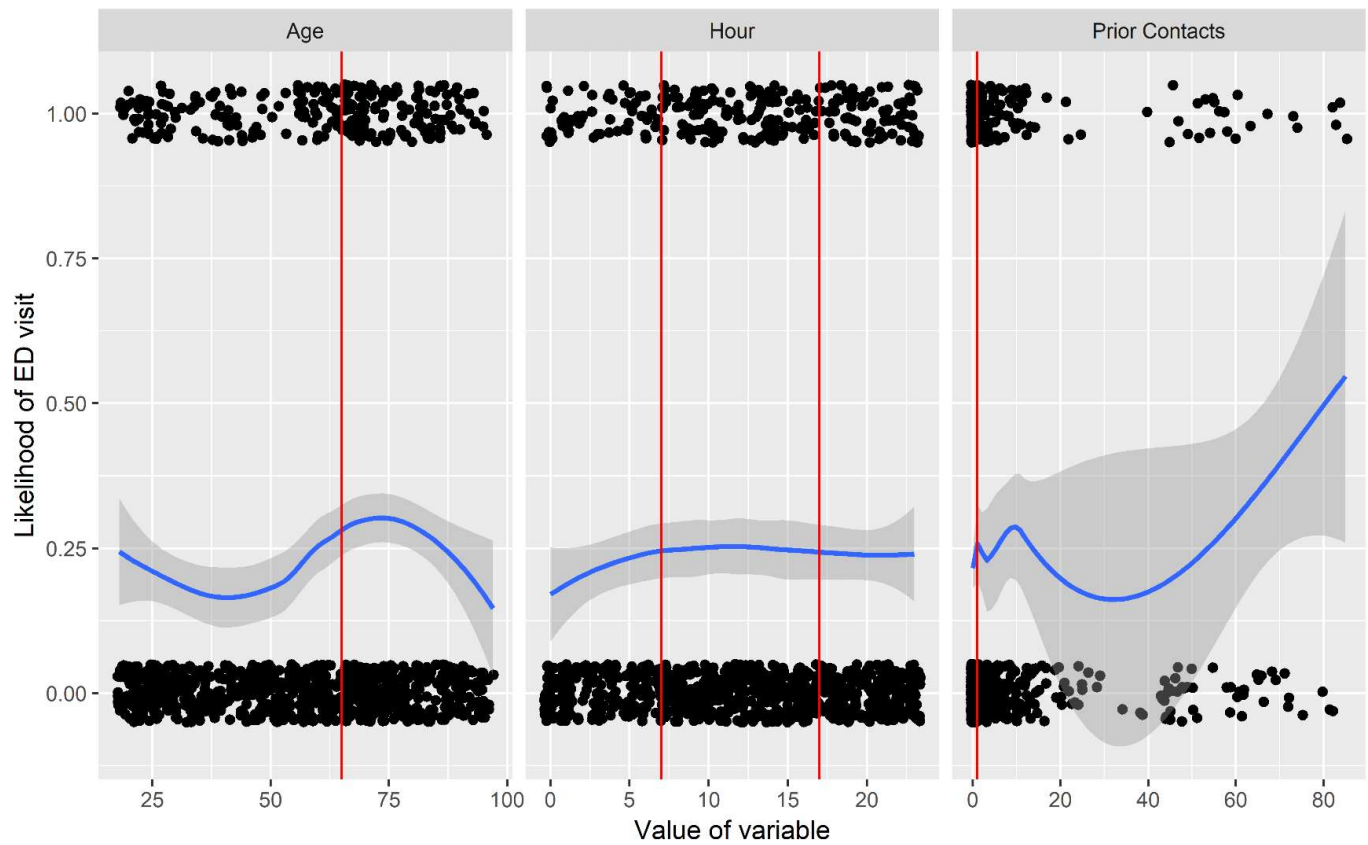


## Appendix 4 – Analysis of continuous variables



This figure presents data for each of the continuous variables which were dichotomized in the logistic regression analysis. Each positive and negative observation of ED visitation is presented in black along the top and bottom of each figure and a LOESS line of best fit is presented in blue. Threshold values selected for use in the logistic regression analysis are marked in red.