

Developing and validating a scoring tool for identifying people who inject drugs at increased risk of hepatitis C virus infection

Handan Wand, Jenny Iversen, David Wilson, Libby Topp, Lisa Maher

To cite: Wand H, Iversen J, Wilson D, *et al.* Developing and validating a scoring tool for identifying people who inject drugs at increased risk of hepatitis C virus infection. *BMJ Open* 2012;2:e000387. doi:10.1136/bmjopen-2011-000387

► Prepublication history for this paper is available online. To view these files please visit the journal online (<http://bmjopen.bmj.com>).

Received 7 September 2011
Accepted 28 October 2011

This final article is available for use under the terms of the Creative Commons Attribution Non-Commercial 2.0 Licence; see <http://bmjopen.bmj.com>

The Kirby Institute, University of New South Wales, Sydney, Australia

Correspondence to

Dr Handan Wand; The Kirby Institute, University of New South Wales, 45 Beach Street, Coogee NSW 2034, Australia.
hwand@nchecr.unsw.edu.au

ABSTRACT

Objectives: To develop and validate a scoring tool based on demographic and injecting risk behaviours to identify those who require additional, non-routine serological screening for hepatitis C virus (HCV) by assessing their personal risk.

Design: Cross-sectional and prospective cohorts.

Setting: People who inject drugs (PWID) and attended Needle and Syringe Programs (NSP) in Australia during the period from 1998 to 2008.

Participants: Cross-sectional data included 16 127 PWID who attended NSP in Australia. Prospective data included 215 HCV-negative PWID who were recruited through street-based outreach, methadone clinics in Australia.

Primary and secondary outcome measures: HCV seroprevalence in the cross-sectional and HCV seroconversions in the prospective data sets.

Results: Current study included 16 127 PWID who attended NSP in Australia. Type of drug last injected, frequency and duration of injecting, sharing needles and syringes or other injecting equipment and imprisonment history were associated with HCV infection in all age groups. Strong relationships between an individual's 'HCV score' and their risk of testing HCV antibody positive were observed. An estimated 78% (95% CI 75% to 81%), 82% (95% CI 80% to 84%), 80% (95% CI 78% to 82%) and 80% (95% CI 77% to 82%) of HCV infections across the age groups (<25, 25–29, 30–39 and ≥40 years) would be avoided if participants in the upper four quintiles of HCV scores fell instead into the lowest quintile.

Conclusions: Knowledge of HCV status has important implications for public health and care and treatment. Risk assessment strategies may assist in alerting PWID who are at increased risk of HCV infection to present for testing.

INTRODUCTION

Worldwide, infection with hepatitis C virus (HCV) is common among people who inject drugs (PWID).¹ Estimates suggest that >70% of new cases of HCV infection are associated

ARTICLE SUMMARY

Article focus

- Although the risk factors for incident infection are well established, the literature suggests that a number of barriers may prevent PWID presenting for screening.
- Study developed a scoring tool based on demographic and injecting risk behaviours to identify those who require additional, non-routine serological screening for HCV by assessing their personal risk.

Key messages

- Current clinical practice guidelines recommend HCV screening of individuals with a history of injecting drugs.
- However, this recommendation focuses on a single risk factor (ie, injecting drug use), whereas considering the cumulative effect of multiple risk factors among PWID can more precisely identify people in need of additional non-routine screening.

Strengths and limitations of this study

- Our prediction equation is based on 11 years of data and >16 000 participants. Ideal risk assessment methods or prediction models should be derived from large representative samples.
- The study population is limited to those who participated in the Australian Needle and Syringe Program Survey, which may result in selection bias.
- We were not able to differentiate between acute, recent and chronic infections.

with injecting drug use.^{2–3} Epidemiological studies have identified independent risk factors for HCV infection, including sharing of contaminated needles and syringes^{4–7} and other injecting equipment,^{8–9} female gender,^{6–10} duration of injecting¹¹ and intravenous cocaine use.^{12–13} Although the risk factors for incident infection are well established, the literature suggests that a number of barriers may prevent PWID presenting for screening and many PWID face the possibility

of HCV infection with a sense of inevitability, fostered by structural barriers to risk avoidance.¹⁴ PWID are a priority population in Australia as HCV prevalence remains high in this group. The burden of advanced liver disease (liver failure and hepatocellular carcinoma) continues to grow among HCV-infected people.¹⁵ It is estimated that 5300 Australians are living with HCV-related cirrhosis, and this figure is expected to double by 2020 without increased therapeutic intervention.¹⁶ Despite the mounting burden of disease and recent advances in antiviral treatments, HCV treatment uptake among PWID remains very low (1%–2% of chronic hepatitis C cases).¹⁶ A major public health challenge is to more effectively identify individuals with HCV before the development of significant clinical consequences.

Our study aimed to develop a scoring tool that can be used by PWID and primary care providers to identify individuals at increased risk of HCV infection. With increasing recognition of the clinical benefits of early diagnosis and treatment uptake,^{17–19} a simple self-administered tool may provide a means for PWID to identify personal risk and to modify risk behaviour and/or seek healthcare/further assessment.

A large database of serial cross-sectional samples of PWID attending Needle and Syringe Programs (NSP) in Australia (1998–2008) was used to develop a statistical model underpinning the tool. Cross-sectional (internal) and prospective (external) validation studies were carried out on the HCV risk assessment algorithm.

The following characteristics were considered essential in the development of the new prediction algorithm: (1) the use of routinely available and minimally intrusive variables and (2) estimation of the cumulative effect of concurrent risk factors on the likelihood of HCV prevalence. We are unaware of any studies to date that have quantified the cumulative effect of concurrent risk factors on the acquisition of HCV infection among PWID.

STUDY POPULATION

The Australian Needle and Syringe Program Survey (ANSPS) is a serial cross-sectional study conducted annually over a 1–2-week period since 1995. More than 50 NSP sites participate annually, with sites selected on the basis of geographic coverage, willingness to participate and an ability to recruit a minimum of 20 survey respondents. The survey methods have been described in detail elsewhere.^{20–23} In brief, all PWID who attended participating ANSPS sites during the designated survey period were invited to participate. Participation was anonymous and voluntary, and there was no financial reimbursement. Following provision of verbal informed consent to participate, respondents were asked to complete a brief self-administered questionnaire on demographic characteristics and injecting and sexual risk behaviours (<http://www.med.unsw.edu.au/NCHECRweb.nsf/resources/2011/>) and to provide a capillary blood sample for antibody HIV and HCV testing. The current

study used data for the period 1998–2008, involving >16 000 individuals. Response rates ranged from 38% to 50% during the study period. Previous research has demonstrated the representativeness of ANSPS samples of the broader population of NSP clients.²⁰

Capillary blood was obtained by finger prick using single-use disposable lancets and cotton-fibre blotting paper. Specimens were kept at room temperature at the survey sites, then couriered to a central collection point before they were forwarded to the laboratory. A modified third generation enzyme immunoassay (Abbott hepatitis C 3.0; Chicago, Illinois, USA) was used to test for HCV antibody. A modified cut-off value for optical density was calculated to capture >95% of the seronegative population. Specimens were considered positive for HCV antibody if the optical density to cut-off ratio was ≤ 1 on initial and subsequent testing.

Ethical approval was obtained from the Human Research Ethics Committee (HREC) at the University of New South Wales as well as from relevant jurisdictional and site-specific HRECs.

STATISTICAL ANALYSES

A split-sample method was used to develop and subsequently validate a risk equation and scoring system. Participants were randomly allocated to either the development ($n=10\,662$; 67%) or internal validation ($n=5331$; 33%) sample data sets.

We selected a range of demographic and injecting behaviour variables as potential determinants of HCV infection. These included gender, indigenous status, imprisonment history, country of birth, language spoken at home, drug last injected, frequency and duration of injecting, sharing of needles and syringes and other injecting equipment (eg, water, filter, spoon, tourniquet), public injecting and drug treatment history. All analyses were stratified by age groups (<25, 25–29, 30–39 and ≥ 40 years).

We used descriptive statistics to characterise the groups according to antibody HCV serostatus: mean and SD for continuous variables and percentages for categorical variables. Logistic regression was used to create a predictive model based on the development data set. We used all non-missing observations available in the relevant analyses as only a small proportion of observations had any missing data (except for the variable ‘imprisonment history’). Cox regression analysis was used to validate the scoring tool for HCV seroconversion in external validation set. All analyses were conducted using SAS statistical software V.9.2 (SAS Institute Inc) and STATA V.10.0.

Derivation of a screening score

Using the development data set ($n=10\,662$), we included a comprehensive list of predictors known to be associated with HCV antibody seropositivity in an initial model. Specifically, we included the main effects of all variables listed in [table 1](#) and their interaction effects. We first

Table 1 Risk factors for HCV

Characteristic	HCV seronegative, N=5214 (49%)	HCV seropositive, N=5448 (51%)
Mean age at survey (\pm SD)	29 \pm 8	34 \pm 9
<25 years, %	35	16
25–29 years, %	24	19
30–39 years, %	29	37
\geq 40 years, %	12	28
Female, %	33	35
Indigenous, %	8	10
Mean age at first injection (\pm SD)	20 \pm 6	19 \pm 6
Mean years of injecting (\pm SD)	9 \pm 7	15 \pm 9
<5 years, %	26	12
5–9 years, %	28	21
10–16 years, %	23	28
\geq 17 years, %	14	40
Ever been in prison, %	17	33
Been in prison last year, %	11	22
Drug injecting behaviours (last month)		
Drug injected, %		
Amphetamine/methamphetamine	51	28
Heroin	35	48
Cocaine	3	5
Methadone	4	8
Morphine	7	9
Buprenorphine	1	2
Others*	9	8
Injecting daily or more, %	50	58
Receptive sharing needle/syringe, %	15	18
Receptive sharing ancillary equipments†, %	33	38
Injected by another, %	14	12
New needle syringe in every injection	72	68
Injected in public	46	52

*Benzos, anabolic steroids, mixed drugs, other drugs or not reported.

†Water, spoon, filter and tourniquet.

HCV, hepatitis C virus.

analysed the univariate associations between the independent variables and HCV seropositivity. Backward elimination was used to reach the final multivariate model, in which factors with the largest p value were sequentially deleted until only significant predictors remained. We then created a weighted scoring system by rounding all regression coefficients up to the nearest integer (ie, the smallest integer greater than the estimate). This method was based on the β -coefficients (or log of the ORs) rather than ORs, which can be excessively influenced by only a few factors.^{24–26} Once the final model was defined, we created integer weights for each variable. We calculated these weights by multiplying the model coefficients by 10. Using the rounded weights in the risk function, we estimated the participant-specific probabilities of HCV seropositivity and characterised the degrees of risk based on cut-off points of the probability distribution.

Cross-sectional internal validation

We examined the predictive validity of the scoring system using the internal validation data sets (n=5331). We also assessed the predictive validity of this scoring system on

the subsequent risk of HCV antibody seroconversion using prospective data collected from individuals who visited ANSPS sites multiple times and tested HCV seronegative at their first visit.

We used the cross-sectional data set to check the sensitivity and robustness of the new screening score. We computed standard validation measures: the proportion of antibody HCV seropositive specimens, sensitivity, specificity, positive likelihood and negative likelihood ratio and the area under the receiver operating characteristic curve as discrimination statistics. We also assessed the diagnostic characteristics of different cut-points based on the total score in the development as well as validation data sets. The purpose of this analysis was to assess whether the combination of risk factors under consideration could predict those at increased risk with acceptable accuracy.

Prospective external validation

We have also conducted a prospective external validation study to assess the performance of the scoring system for HCV seroconversion among the new PWID. The details of the study population have been described

elsewhere.¹¹ In brief, as part of a multisite study between 1999 and 2002, 215 hepatitis C-seronegative PWID were recruited through street-based outreach, methadone clinics in South Western Sydney and followed-up at 3–6-monthly intervals. Using the Cox regression coefficients in the risk function, the participant-specific probability of HIV seroconversion was estimated. A rule to characterise different degrees of risk based on cut-off points of the probability distribution was then established. We also assessed the diagnostic features and characterised different degrees of risk based on cut-off points of the probability distribution.

Population attributable risk

After we calculated and validated the HCV screening score, we estimated population attributable risks, which estimates the percentage of HCV infections that would not have occurred if all participants had been assigned the 'lowest risk' (first quintile) category of the HCV screening score. We calculated population attributable risks using a previously described method²⁷ that was applied to this study design and appropriate for use with multivariable adjusted RRs.

RESULTS

Our study population comprised 10 662 individuals in the development data set. **Table 1** summarises participant characteristics by HCV antibody serostatus. The overall prevalence of HCV was 51%. HCV seropositive participants tended to be older and more likely to report a longer duration of injecting, heroin as the drug last injected, a history of imprisonment, daily or more frequent injecting, public injecting and sharing needles and syringes and other injecting equipment.

Table 2 presents the final multivariate logistic regression model derived from the development data set by age groups. History of imprisonment, duration of injecting (5–9, 10+ years), drug last injected (heroin, cocaine, methadone, morphine, buprenorphine and others), needle and syringe sharing and sharing of ancillary equipment were all significantly associated with increased risk of antibody HCV seropositivity across all age groups. Injecting frequency (daily or more) was determined to be a significant risk factor for those aged <30 years. Female gender was associated with an increased risk of HCV seroprevalence for those younger than 40 years. Indigenous status was a significant predictor for HCV infection among people aged 30–39 years. Drug last injected and duration of injecting each required multiple categories to capture the risk gradient, whereas other risk factors were binary. The risk factors collectively yielded an area under the receiver operating characteristic curve of 0.73 (95% CI 0.70 to 0.76), 0.72 (95% CI 0.70 to 0.75), 0.73 (95% CI 0.70 to 0.76) and 0.66 (95% CI 0.64 to 0.71) for the age groups <25, 25–29, 30–39 and ≥40 years (data not shown). There were no significant interactions between injecting risk behaviours and gender across age groups (data not shown).

Table 3 shows the ORs from the logistic regression models and population attributable risks of HCV infection for the quintiles of the risk scores by age groups for the development and validation data sets. There was a linear trend towards increasing HCV infection with increasing score regardless of the age groups in both data sets (trend, p value < 0.001). Using the development data set, we estimated population attributable risks (95% CI) for the upper four quintiles of the scores. Results showed that 78% (95% CI 75% to 81%), 82% (95% CI 80% to 84%) and 80% (95% CI 77% to 82%) of HCV infections across the age groups would be avoided if participants in the upper four quintiles of the HCV scores instead fell into the lowest quintile. Results from the validation data set were consistent with those from the development data set (**table 3**). We also assessed the diagnostic characteristics of cut-points (according to first, second, third and the fourth quintiles in overall population) for total score in the development as well as the validation data sets (**table 4**). An increased risk of HCV was clearly associated with increasing scores. For example, a cut-point score of 10 or higher distinguished a 'increased risk' group, with a sensitivity of 96% or higher; similarly a cut-point of 20 or higher yielded at least 92% sensitivity in all age groups in the development data set; in cross-sectional validation, sensitivity was estimated to be at least 94% across the age groups for the cut-point of 10/15 or more and at least 76% for 20 or more. **Figure 1** illustrates the risk of PWID being HCV seropositive as a continuous function of the total score. Across all age groups, increasing scores were clearly associated with increased risk of HCV antibody positivity.

A total of 61 HCV seroconversions were observed during follow-up, with an overall incidence rate of 45.8 per 100 person-years (95% CI 35.6 to 58.8) in our external prospective validation data set. Results from our prediction model were consistent with the previous results and had the acceptable validity (**table 5**). Higher number of risk factors associated with increased risk of HCV seropositivity compared two or less risk factors (reference) (HR 1.10, 95% CI 0.74 to 1.60, HR 1.15, 95% CI 0.78 to 1.65, HR 2.17, 95% CI 1.45 to 3.17 and HR 3.19, 95% CI 2.30 to 5.51 for three, four, five and six or more risk factors, respectively). Overall sensitivity of the scoring tool was 73% sensitivity and 33% specificity (**figure 2**).

DISCUSSION

In this study, we developed a scoring tool based on data from ~16 000 PWID who attended ANSPS sites between 1998 and 2008. The tool was validated to more accurately identify those at increased risk of HCV infection. Current Australian guidelines recommend HCV antibody screening in all individuals with risk factors for infection regardless of patient characteristics and settings.²⁸ Increasing the rate of HCV diagnosis and, in particular, diagnosis of acute infection and providing

Table 2 Multivariable logistic regression: ORs and 95% CIs for HCV infection scoring by age groups

	<25 years (N = 2686)			25–29 years (N = 2291)			30–39 years (N = 3563)			≥40 years (N = 2122)		
	OR (p)	β×10	Score	OR (p)	β×10	Score	OR (p)	β×10	Score	OR (p)	β×10	Score
Sex												
Male	1	–	0	1			1			–		
Female	1.4	3.4	3	1.5 (<0.001)	4.1	4	1.4 (0.002)	3.3	3			
Indigenous												
No	–	–	–	–	–	–	1	–	–	–		
Yes							1.3 (0.04)	2.8	3			
Ever been in prison?												
No	1	1	0	1			1			1		
Yes	2.2 (<0.001)	7.8	8	2.8 (<0.001)	10.2	10	1.9 (<0.001)	6.4	6	1.4 (0.003)	3.4	3
Years of injecting												
<5	1	–	0	1						1		
5–9	2.0 (<0.001)	6.8	7	1.7 (<0.001)	5.5	6	1.9 (<0.001)	6.5	7	1.5 (0.149)	3.7	4
≥10	3.1 (<0.001)	11.1	11	2.4 (<0.001)	8.9	9	3.6 (<0.001)	12.7	13	4.6 (<0.001)	15.3	15
Drug last injected												
Amphetamine/methamphetamine	1	–	0	1			1			1		
Morphine	2.3 (<0.001)	8.3	8	1.7 (0.009)	5.5	6	1.9 (<0.001)	6.7	7	1.9 (<0.001)	6.7	7
Others*	2.0 (<0.001)	6.7	7	1.6 (0.010)	4.7	5	1.8 (<0.001)	5.9	6	1.5 (0.053)	4.0	4
Heroin	3.0 (<0.001)	11.1	11	2.7 (<0.001)	10.0	10	3.0 (<0.001)	10.7	11	2.5 (<0.001)	9.0	9
Cocaine	6.4 (<0.001)	18.6	19	3.6 (<0.001)	12.7	13	3.0 (<0.001)	10.9	11	3.6 (<0.001)	12.8	13
Methadone	3.3 (<0.001)	11.3	11	3.4 (<0.001)	12.2	12	3.0 (<0.001)	11.0	11	3.1 (<0.001)	11.3	11
Buprenorphine	3.2 (0.003)	11.4	11	2.8 (0.004)	10.4	10	2.8 (0.001)	10.2	10	1.9 (0.141)	6.2	6
Drug injecting behaviours last month												
Injecting frequency												
Less than daily	1	–	0	1								
Daily or more	1.4 (0.001)	3.1	3	1.5 (<0.001)	4.0	4	–	–	–	–	–	–
Receptive sharing needle/syringe												
No	–			1			1			–		
Yes	–			1.4 (0.005)	3.4	3	1.4 (0.002)	3.3	3	–		
Receptive sharing ancillary equipment†												
No	1	1	0	1						1		
Yes	1.3 (0.006)	2.5	3	1.3 (0.003)	3.0	3	–	–	–	1.5 (0.001)	3.8	4

*Benzos, anabolic steroids, mixed drugs, other drugs or not reported.

†Water, spoon, filter and tourniquet.

HCV, hepatitis C virus.

Table 3 ORs and 95% CIs for HCV infection by quintiles of HCV scoring

	Age <25 years		Age 25–29 years		Age 30–39 years		Age ≥40 years	
	OR (95% CI)	p*	OR (95% CI)	p*	OR (95% CI)	p*	OR (95% CI)	p*
Development data set								
HCV risk score†		<0.001		<0.001		<0.001		<0.001
Fifth 1	1		1		1		1	
Fifth 2	1.90 (1.33 to 2.69)		2.60 (1.88 to 3.57)		2.23 (1.72 to 2.89)		2.63 (1.94 to 3.58)	
Fifth 3	2.77 (1.92 to 4.01)		4.12 (3.00 to 5.65)		4.07 (3.13 to 5.28)		4.56 (3.10 to 6.70)	
Fifth 4	5.40 (3.95 to 7.38)		4.85 (3.53 to 6.66)		5.40 (4.16 to 7.02)		5.86 (4.25 to 8.08)	
Fifth 5	10.31 (7.44 to 14.29)		12.40 (9.08 to 16.91)		9.10 (7.04 to 11.75)		7.78 (5.61 to 10.80)	
Population attributable risk for HCV score (%) (95% CI)								
Lowest vs upper four fifth	78% (75% to 81%)		82% (80% to 84%)		80% (78% to 82%)		80% (77% to 82%)	
Lower two vs upper three fifth	74% (72% to 77%)		76% (74% to 78%)		74% (73% to 77%)		72% (69% to 74%)	
Validation data set								
HCV risk score†		<0.001		<0.001		<0.001		<0.001
Fifth 1	1		1		1		1	
Fifth 2	1.92 (1.12 to 3.28)		2.75 (1.73 to 4.38)		2.73 (1.94 to 3.85)		1.98 (1.30 to 3.02)	
Fifth 3	4.70 (2.75 to 8.04)		4.33 (2.78 to 6.77)		5.34 (3.74 to 7.63)		5.03 (2.78 to 9.10)	
Fifth 4	6.00 (3.76 to 9.56)		6.13 (3.93 to 9.56)		7.46 (5.19 to 10.74)		3.79 (2.44 to 5.87)	
Fifth 5	11.97 (7.41 to 19.32)		9.28 (6.07 to 14.19)		10.68 (7.56 to 15.10)		5.42 (3.50 to 8.42)	
Population attributable risk for HCV score (%) (95% CI)								
Lowest vs upper four fifth	82% (79% to 85%)		80% (77% to 83%)		84% (82% to 85%)		73% (68% to 77%)	
Lower two vs upper three fifth	79% (76% to 81%)		74% (71% to 77%)		78% (76% to 79%)		67% (62% to 71%)	

*Test for trend.

†HCV score for age <25 years was <7 for fifth 1, 7 to <14 for fifth 2, 14 to <17 for fifth 3, 17 to <24 for fifth 4 and ≥24 for fifth 5; for age 25–29 years was <12 for fifth 1, 12 to <17 for fifth 2, 17 to <22 for fifth 3, 22 to <26 for fifth 4 and ≥26 for fifth 5; for age 30–39 years was <13 for fifth 1, 13 to <19 for fifth 2, 19 to <24 for fifth 3, 24 to <27 for fifth 4 and ≥27 for fifth 5; for age ≥40 years was <15 for fifth 1, 15 to <22 for fifth 2, 22 to <24 for fifth 3, 24 to <27 for fifth 4 and ≥27 for fifth 5.

HCV, hepatitis C virus.

Table 4 Optimal characteristics of HCV scoring*

Score cut-points†	Age <25 years		Age 25–29 years		Age 30–39 years		Age ≥40 years	
	Sensitivity (%)	Specificity (%)	Sensitivity (%)	Specificity (%)	Sensitivity (%)	Specificity (%)	Sensitivity (%)	Specificity (%)
Development data set (n=10 662)								
≥10	96	17	99	9	99	7	98	10
≥15	92	32	95	23	97	15	97	19
≥20	74	60	86	42	90	36	94	24
≥25	55	74	68	64	73	57	75	54
Validation data set cross-sectional (n=5465)								
≥10	96	18	99	8	99	10	99	10
≥15	94	32	95	25	97	19	97	15
≥20	76	57	88	40	87	43	94	21
≥25	59	72	67	61	73	61	74	52

*HCV score : For age <25 years: (female)×3 + (indigenous)×0 + (injecting 5–9 years)×7 + (injecting ≥10 years)×11 + morphine×8 + (other drugs, eg, benzodiazepines, anabolic steroids, mixed drugs)×7 + (heroin)×11 + (cocaine)×19 + (methadone)×11 + (morphine)×8 + (buprenorphine)×11 + (daily or more)×3 + (shared needle and syringe)×0 + (shared other equipment)×3 + (been in prison)×8. For age 25–29 years: (female)×4 + (indigenous)×0 + (injecting 5–9 years)×6 + (injecting ≥10 years)×9 + morphine×6 + (other drugs, eg, benzodiazepines, anabolic steroids, mixed drugs)×5 + (heroin)×10 + (cocaine)×13 + (methadone)×12 + (morphine)×5 + (buprenorphine)×10 + (daily or more)×4 + (shared needle and syringe)×4 + (shared other equipment)×0 + (been in prison)×6. For age 30–39 years: (female)×3 + (indigenous)×3 + (injecting 5–9 years)×7 + (injecting ≥10 years)×13 + morphine×7 + (other drugs, eg, benzodiazepines, anabolic steroids, mixed drugs)×6 + (heroin)×11 + (cocaine)×11 + (methadone)×11 + (morphine)×7 + (buprenorphine)×10 + (daily or more)×0 + (shared needle and syringe)×3 + (shared other equipment)×0 + (been in prison)×6. For age ≥40 years: (female)×0 + (indigenous)×0 + (injecting 5–9 years)×4 + (injecting ≥10 years)×15 + morphine×7 + (other drugs, eg, benzodiazepines, anabolic steroids, mixed drugs)×4 + (heroin)×9 + (cocaine)×13 + (methadone)×11 + (morphine)×7 + (buprenorphine)×6 + (daily or more)×0 + (shared needle and syringe)×3 + (shared other equipment)×0 + (been in prison)×6.

†Approximate cut-points for the first, second, third and the fourth quintiles.

HCV, hepatitis C virus.

access to effective antiviral treatment has the potential to improve individual quality of life and reduce the burden of HCV infection. Being unaware of one's HCV seros-

tatus has been identified as a major barrier to increasing HCV treatment uptake, including among PWID.^{29 30} While a relatively high proportion (64%) of participants

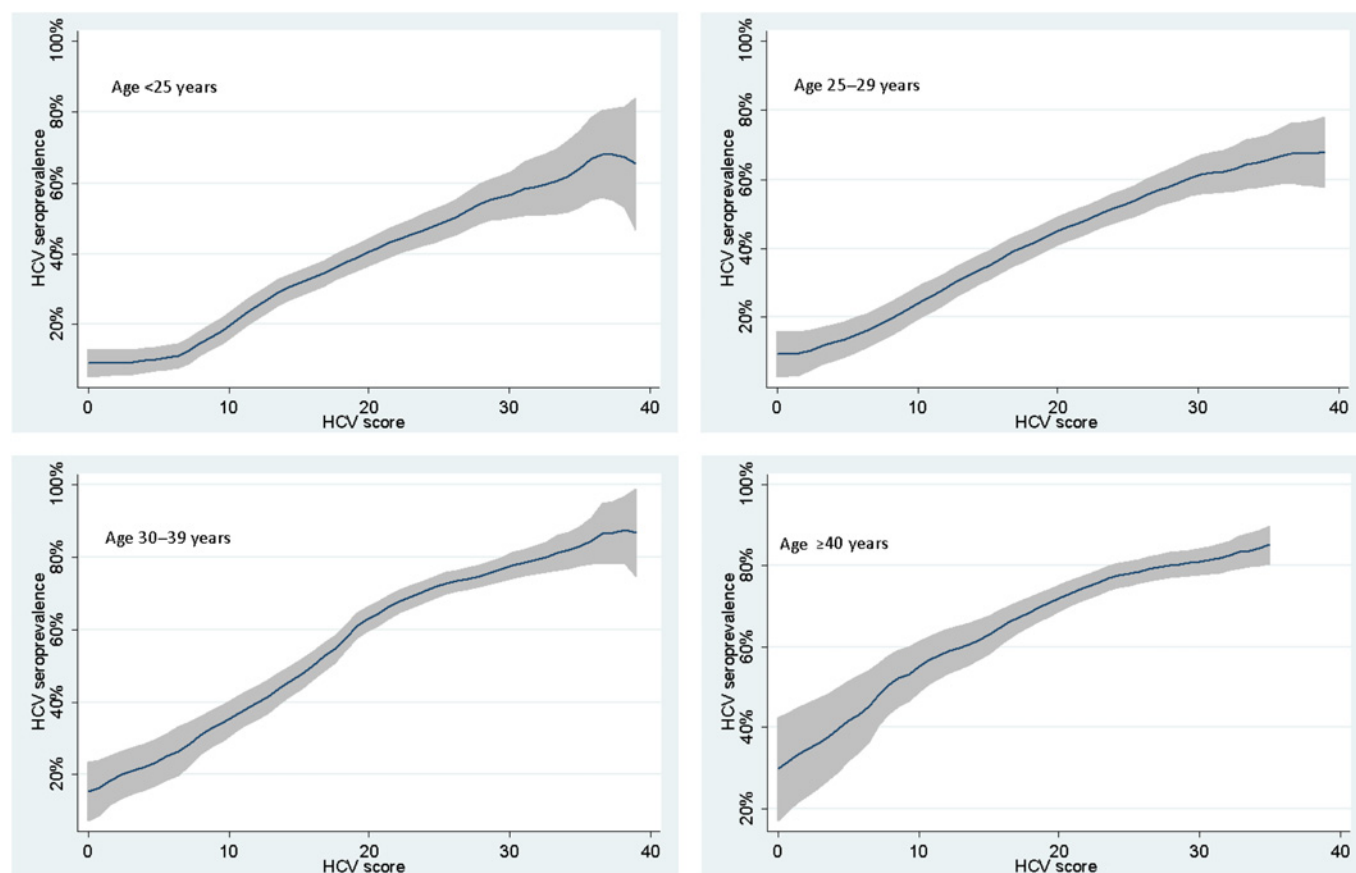
**Figure 1** Total score versus risk of hepatitis C virus (HCV) infection in cross-validation data set.

Table 5 Optimal characteristics of HCV scoring using external prospective validation (N=215)

Risk factors, n	Validation with prospective data set	
	HR (95% CI)	p
<2	Reference	
3	1.10 (0.74 to 1.60)	0.667
4	1.15 (0.78 to 1.65)	0.504
5	2.17 (1.45 to 3.17)	<0.001
≥6	3.19 (2.30 to 5.51)	<0.001

Score cut-points	Validation with prospective data set	
	Sensitivity (%)	Specificity (%)
≥10	89	16
≥15	78	33
≥20	60	54
≥25	41	70

HCV, hepatitis C virus.

in the ANSPS reported recent HCV testing, HCV antibody-negative respondents were less likely to do so than HCV antibody-positive respondents (60% vs 67%). One in five (20%) HCV antibody-negative participants had not been tested for HCV in the last 12 months, and a further 20% had never been tested (<http://hiv.cms.med.unsw.edu.au/> (accessed August 2011)). This suggests that both uptake and frequency of testing could be improved.

Although our scoring tool was developed for the prediction of current HCV diagnoses and not incident HCV in the future, strong consistency in risk factors for the prediction incident events of HCV was shown in prospective validation of the tool. Therefore, we expect that the same set of risk factors in our model plays an important role in the prediction of future HCV seroconversion.

The intention of this study was not to identify a unique and specific cut-point of risk above which to target screening, but rather, to assess whether risk factors under consideration could predict those at increased

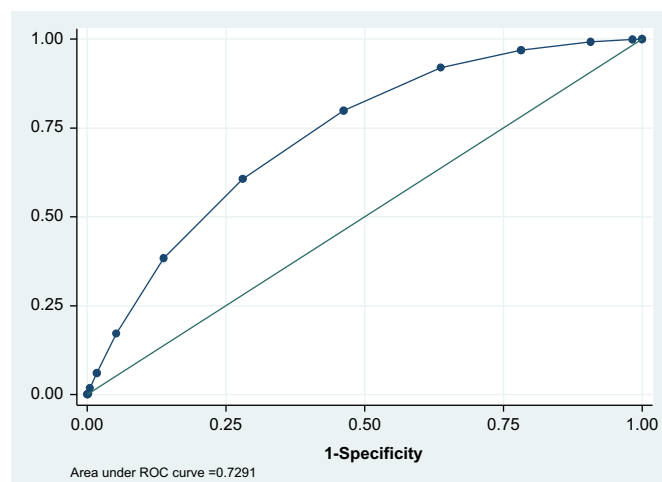
risk accurately in order to consider the tool's use in facilitating increased screening. With a high background HCV prevalence of ~70% among Australian PWID, all PWID should be screened for HCV. However, identification of just one of our listed risk factors substantially increased the likelihood of infection. Although Australia has screening guidelines for hepatitis C, current guidelines do not target specific attributes or injecting risk behaviours.²⁸ By focusing on particular characteristics and specific high-risk behaviours, tools such as the one developed in this study may allow for more targeted identification of individuals at increased risk of infection. If used as a self-administered questionnaire, it is likely that respondents will answer more accurately.³¹ Since the vast majority of new HCV diagnoses in Australia are among people with a history of injecting drug use,²⁰ this tool provides a valuable resource that could inform the establishment of more focused national screening guidelines.

Furthermore, although current clinical practice guidelines recommend HCV screening of individuals with a history of injecting drugs, this recommendation focuses on a single risk factor (ie, injecting drug use), whereas considering the cumulative effect of multiple risk factors can more precisely identify people in need of additional non-routine screening. This is particularly pertinent in resource-constrained environments (including time-restricted clinical settings). Our methodology made use of a range of coexisting risk factors that were identified by a rigorous statistical approach in order to accurately identify the most relevant factors for HCV infection.

Risk calculation approaches have been extensively used in decision-making about public health and clinical care and have even been proposed as an alternative to diagnosis for some diseases.³² Our risk calculation was based on a statistical method that yielded a systematic scoring system for carefully selected predictors, guided not only by numerical and scientific evidence but also by feasibility perspectives. We chose categorised variables that highlighted the important risk factors to motivate high-risk persons to be screened or to modify behaviours. This combination of factors may explain the enhanced properties of our scoring tool.

Our study has several strengths, including being the first to validate a predictive model through internal cross-sectional and prospective data sets. Our prediction equation is based on 11 years of data and >16 000 participants. Ideal risk assessment methods or prediction models should be derived from large representative samples. The current study has several limitations. First, the study population is limited to those who participated in the ANSPS, which may result in selection bias. However, the ANSPS has been shown to be broadly representative of PWID attending NSPs.²⁰ Second, we were not able to differentiate between acute, recent and chronic infections.

Risk factor screening and identification allows for patients to be educated regarding the risks of injection

**Figure 2** Sensitivity/specificity for the prospective validation data set. ROC, receiver operating characteristic.

drug use and needle sharing. Appropriate testing and diagnosis of HCV allows for the patient to be evaluated for treatment and receive counselling regarding HCV prevention. In addition to physician education, patient education campaigns must also be developed to increase patient compliance with testing recommendations made by their physicians.

In conclusion, we believe that the screening tool described here will provide a simple and cost-effective method of identifying and alerting PWID who are in need of additional, non-routine HCV screening with notable predictive validity. A self-assessment method that helps individual PWID understand their relative increased risk of infection provides the basis for increased uptake of screening, diagnosis and antiviral treatment among this population.

In summary, the tool described here has the potential to engage current PWID in timely and accurate risk analysis, potentially modifying risk behaviour, and increasing uptake of HCV screening and antiviral treatment in this population.

Funding The National Centre in HIV Epidemiology and Clinical Research is funded by the Australian Government Department of Health and Ageing, and is affiliated with the Faculty of Medicine, The University of New South Wales. The content of this publication is solely the responsibility of the authors and does not necessarily represent the official views of any of the institutions mentioned above.

Competing interests None.

Ethics approval Ethical approval was obtained from the Human Research Ethics Committee (HREC) at the University of New South Wales as well as from relevant jurisdictional and site-specific HRECs.

Contributors HW and LM implemented the study, analysed the data and wrote the first draft. LM, JI, LT and DW helped drafting, interpreting the data and finalising the manuscript. All authors saw and approved the final submitted version of the manuscript.

Provenance and peer review Not commissioned; externally peer reviewed.

Data sharing statement No additional data available.

REFERENCES

- McGinn T, O'Connor-Moore N, Alfandre D, *et al.* Validation of a hepatitis C screening tool in primary care. *Arch Intern Med* 2008;168:2009–13.
- Thorpe LE, Ouellet LJ, Hershow R, *et al.* Risk of hepatitis C virus infection among young adult injecting drug users who share injecting equipment. *Am J Epidemiol* 2002;155:645–53.
- Alter MJ, Kruszon-Moran D, Nainan OV, *et al.* The prevalence of hepatitis C virus infection in the United States, 1998 through 1994. *New Engl Med J* 1999;341:556–62.
- Villano S A, Vlahov D, Nelson KE, *et al.* Incidence and risk factors for hepatitis C among injection drug users in Baltimore, Maryland. *J Clin Microbiol* 1997;35:3274–7.
- Garfein RS, Doherty MC, Monterroso ER, *et al.* Prevalence and incidence of hepatitis C virus infection among young adult injection drug users. *J Acq Immune Defic Syndr Hum Retrovirol* 1998;18:11–19.
- Hahn JA, Page-Shafer K, Lum PJ, *et al.* Hepatitis C virus seroconversion among young injection drug users: relationships and risks. *J Infect Dis* 2002;186:1558–64.
- Hagan H, Thiede H, Des Jarlais DC. Hepatitis C virus infection among injection drug users: survival analysis of time to seroconversion. *Epidemiology* 2004;15:543–9.
- Hagan H, Thiede H, Weiss NS, *et al.* Sharing of drug preparation equipment as a risk factor for hepatitis C. *Am J Public Health* 2001;91:42–6.
- Falster K, Kaldor J, Maher L. Hepatitis C virus acquisition among injecting drug users: a cohort analysis of a national repeated cross-sectional survey of needle and syringe program attendees in Australia, 1995–2004. *J Urban Health* 2008;86:106–18.
- Maher L, Jalaludin B, Chant KG, *et al.* Incidence and risk factors for hepatitis C seroconversion in injecting drug users in Australia. *Addiction* 2006;101:1499–508.
- Maher L, Li J, Jalaludin B, *et al.* High hepatitis C incidence in new injecting drug users: a policy failure? *Aust N Z J Public Health* 2007;31:30–5.
- Patrick DM, Tyndall MW, Cornelisse PG, *et al.* Incidence of hepatitis C virus infection among drug users during an outbreak of HIV infection. *Can Med Assoc J* 2001;165:889–95.
- Miller CL, Johnston C, Spittal PM, *et al.* Opportunities for prevention: hepatitis C prevalence and incidence in a cohort of young injection drug users. *Hepatology* 2002;36:737–42.
- Davis M, Rhodes T. Beyond prevention? *Int J Drug Policy* 2004;15:123–31.
- National Centre in HIV Epidemiology and Clinical Research. *HIV/AIDS, viral hepatitis and sexually transmissible infections in Australia. Annual Surveillance Report 2009*. Sydney, NSW: National Centre in HIV Epidemiology and Clinical Research, University of New South Wales.
- National Centre in HIV Epidemiology and Clinical Research (NCHECR). 2006. *Estimates and projections of Hepatitis C virus epidemic in Australia*. Hepatitis C Virus Projection Working Group, NCHECR, The University of New South Wales: Sydney, Australia. Available from: <http://hiv.cms.med.unsw.edu.au/> (accessed August 2011).
- Gerlach J, Diepolder H, Zachoval R, *et al.* Acute hepatitis C: high rate of both spontaneous and treatment-induced viral clearance. *Gastroenterology* 2003;125:80–8.
- Kamal SM, Fouly AE, Kamel RR, *et al.* Peginterferon alfa-2b therapy in acute hepatitis C: impact of onset of therapy on sustained virologic response. *Gastroenterology* 2006;130:632–8.
- Gregory JD, Hellard M, Matthews GV, *et al.* Effective treatment of injecting drug users with recently acquired hepatitis C virus infection. *Gastroenterology* 2010;138:123–35.
- Topp L, Iversen J, Wand H, *et al.* Representativeness of injecting drug users who participate in HIV surveillance: results from Australia's Needle and Syringe Program Survey. *J Acquir Immune Defic Syndr* 2008;47:632–8.
- MacDonald M, Crofts N, Kaldor J. Transmission of hepatitis C virus: rates, routes, and cofactors. *Epidemiol Rev* 1996;18:137–48.
- MacDonald M, Wodak AD, Ali R, *et al.* HIV prevalence and risk behavior in needle exchange attendees: a national study. The Collaboration of Australian Needle Exchanges. *Med J Aust* 1997;166:237–40.
- MacDonald MA, Wodak AD, Dolan KA, *et al.* Hepatitis C virus antibody prevalence among injecting drug users at selected needle and syringe programs in Australia, 1995–1997. Collaboration of Australian NSPs. *Med J Aust* 2000;172:57–61.
- Schmidt MI, Duncan BB, Bang H, *et al.* Identifying individuals at high risk for diabetes: the Atherosclerosis Risk in Communities study. *Diabetes Care* 2005;28:2013–18.
- Gonen M. *Analyzing Receiver Operating Characteristic Curves with SAS 2007*. Cary, NC: SAS Institute.
- Sackett D, Straus SE, Richardson WS, *et al.* (2000) *Evidence-Based Medicine: How to Practice and Teach EBM*. (2nd edn). London: Churchill Livingstone.
- Wand H, Spiegelman D, Law M, *et al.* Estimating population attributable risk for hepatitis C seroconversion in injecting drug users in Australia: implications for prevention policy and planning. *Addiction* 2009;104:2049–56.
- Maher L, Iversen J, Kaldor J. Measuring effectiveness of needle and syringe exchange programs for prevention of HIV among injecting drug users: response to Amundsen. *Addiction* 2006;101:1834–6.
- Volk M, Tocco R, Saini S, *et al.* Public health impact of antiviral therapy for hepatitis C in the United States. *Hepatology* 2009;50:1–6.
- Edlin BR, Kresina TF, Raymond DB, *et al.* Overcoming barriers to prevention, care, and treatment of hepatitis C in illicit drug users. *CID* 2005;40(Suppl 5):S276–85.
- White B, Day C, Maher L. Self reported risk behavior among injecting drug users: self versus assisted questionnaire completion. *AIDS Care* 2007;19:441–7.
- Vickers AJ, Basch E, Kattan MW. Against diagnosis. *Ann Intern Med* 2008;149:200–3.

Correction

Wand H, Iversen J, Wilson D *et al.* Developing and validating a scoring tool for identifying people who inject drugs at increased risk of hepatitis C virus infection. *BMJ Open* 2012;**2**: e000387.

The following references were omitted from the paper:

20. Kshirsagar AV, Bang H, Bombback AS *et al.* A simple algorithm to predict incident kidney disease. *Arch Intern Med* 2008;**168**:2466–73.
25. Iversen J, Wand H, Gonnermann A, *et al.* Gender differences in hepatitis C antibody prevalence and risk behaviours amongst people who inject drugs in Australia 1998–2008. *Int J Drug Policy* 2010;**21**:471–76.
26. Bang H, Edwards AM, Bombback AS, *et al.* Development and validation of a patient self-assessment score for diabetes risk. *Ann Intern Med* 2009;**151**:775–83.
27. Bang H, Vupputuri S, Shoham DA, *et al.* SCReening for Occult RENal Disease (SCORED): a simple prediction model for chronic kidney disease. *Arch Intern Med* 2007;**167**:374–81.
36. Trooskin SB, Navarro VJ, Winn RJ, *et al.* Hepatitis C risk assessment, testing and referral for treatment in urban primary care: Role of race and ethnicity. *World J Gastroenterol* 2007;**13**:1074–1078.

References in the manuscript should be re-numbered accordingly.

‘INTRODUCTION’, fourth paragraph should have read:

‘...in the development of the new prediction algorithm’: (1) the use of routinely available and minimally intrusive variables and (2) estimation of the cumulative effect of concurrent risk factors on the likelihood of²⁰ HCV prevalence. “We are unaware of any studies”²⁰ to date “that have quantified the cumulative effect of concurrent risk factors on the”²⁰ acquisition of...’

‘STUDY POPULATION’, second paragraph, should have read:

“A modified, third generation enzyme immunoassay (Abbott hepatitis C 3.0, Chicago, IL, USA) was used to test for HCV antibody. A modified cutoff value for optical density was calculated to capture greater than 95% of the seronegative population. Specimens were considered positive for HCV antibody if the optical density to cutoff ratio was greater than or equal to one on initial and subsequent testing”.²⁵

‘STATISTICAL ANALYSES’, third paragraph, should have read:

‘We used descriptive statistics to characterize the groups according to antibody HCV serostatus: mean and standard deviation (SD) “for continuous variables and percentages for categorical variables”.²⁶ Logistic regression was used to create a predictive model based on the development data set. We used all non-missing observations available in the relevant analyses as only a small proportion of observations had any missing data (except for the variable “imprisonment history”).²⁶

‘Derivation of a Screening Score’, first paragraph, should have read:

‘Using the development data set (n = 10 662), “we included a comprehensive list of predictors known to be associated” with HCV antibody seropositivity “in an initial model”.²⁶ “Specifically, we included the main effects of all variables listed in Table 1”.²⁶

“We first analyzed the univariate associations between the independent variables and”²⁷ HCV seropositivity. Backward elimination was used to reach the final multivariate “model, in which factors with the largest P value”.^{20,27}

‘We then “created a weighted scoring system by rounding all regression coefficients”²⁶ up to the nearest integer (ie, “the smallest integer greater than”²⁷ the estimate). “This method was based on the β -coefficients (or log of the odds ratios) rather than odds ratios, which can be excessively influenced by only a few factors”.²⁷ Once the final model was defined, we created integer weights for each variable. We calculated these weights “by multiplying the model coefficients by 10. Using the rounded weights in the risk function, we estimated the participant-specific”²⁷ probabilities of HCV seropositivity and characterized the “degrees of risk based on cut-off points of the probability distribution”.^{20,27}

‘Cross-sectional internal validation’, second paragraph, should have read:

‘We used the cross-sectional dataset to check the sensitivity and robustness of the new screening score. We computed standard validation measures: the proportion of antibody HCV seropositive specimens, sensitivity, specificity, positive likelihood and negative likelihood ratio and the area “under the receiver operating characteristic curve (AUC) as discrimination statistics. We also assessed the diagnostic characteristics of different cut-points based on the total score in the development as well as validation’.²⁶

‘Prospective external validation’, first paragraph, should have read:

‘Using the Cox regression coefficients in the risk function, the participant-specific probability of HIV seroconversion was estimated. A rule to characterize different degrees of risk based on cut-off points of the probability distribution was then established. We also assessed the diagnostic features and characterized “different degrees of risk based on cut-off points of the probability distribution”’.²⁰

‘RESULTS’, second paragraph, should have read:

‘Table 2 presents the final multivariate logistic regression model derived from the development data set by age groups’.²⁶

‘...multiple categories “to capture the risk gradient, whereas other risk factors were binary”’.²⁶

‘DISCUSSION’, second paragraph, should have read:

‘...of current HCV diagnoses and not incident HCV in the future, strong consistency in risk factors for the prediction incident events of HCV was shown in prospective validation of the tool.²⁶ Therefore, “we expect that the same set of risk factors in our model plays an important role in the prediction of future”²⁶....’

‘DISCUSSION’, fifth paragraph, should have read:

‘Risk calculation approaches have been extensively “used in decision making about public health and clinical care and have even been proposed as an alternative to diagnosis for some diseases”.^{26,33} Our risk calculation was based on a statistical method that yielded a systematic scoring system for carefully selected predictors, guided not only by numerical and scientific evidence but also feasibility perspectives.²⁶ We “chose categorized variables”²⁶ which highlighted the “important risk factors to motivate high-risk persons to be screened or to modify behaviors. This combination of factors may explain the enhanced properties of our”²⁶ scoring tool’.

‘DISCUSSION’, sixth paragraph, should have read:

“Ideal risk assessment methods or prediction models should be derived from large representative samples”.²⁶

‘DISCUSSION’, seventh paragraph, should have read:

“Risk factor screening and identification allows for patients to be educated regarding the risks of injection drug use and needle sharing. Appropriate testing and diagnosis of HCV allows for the patient to be evaluated for treatment and receive counseling regarding”³⁶ HCV prevention. “In addition to physician education, patient education campaigns must also be developed to increase patient compliance with testing recommendations made by their physicians”.³⁶

BMJ Open 2012;**2**:e000387corr1. doi:10.1136/bmjopen-2011-000387corr1